

Print Number:

Print Date:

NOBLELIFT

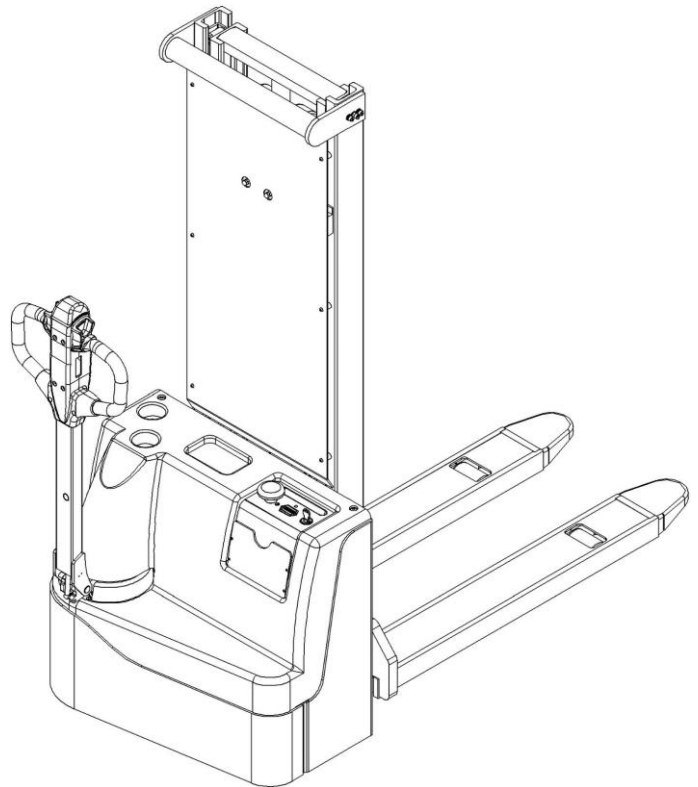


Scan QR Code for More

Electric Pallet Stacker ECL10

PARTS MANUAL

532046020101



Version V01

Truck Identification Number From:

Parts Manual ECL10-PM01EN

Please order parts from authorized dealers of Noblelift Intelligent Equipment Co., LTD.

In order to avoid wrong delivery, all the orders for spare parts should specify the following items:

- Truck model, identification number and manufacture year.
- Orders for spare parts of mast, hydraulic transmission unit, steering axle, motor, etc. shall indicate the manufacture number of these parts.
- Codes for Noblelift spare parts are shown in the table of parts manual. Please also pay attention to the description of supply status, order quantity, etc. (check the number listed in "Mark" column of the parts manual).

"Mark" Column:

The unmarked indicates the parts are in short supply cycle.

Number 1: supply as package. Indicating these that parts are small parts and seal parts, which are supplied in package unit and in short supply cycle.

Number 2: supply with constraints. Indicating that these spare parts are not in stock and will be prepared for production after receiving the order from customers, which are in long supply cycle.

Number 3: phasing-out supply. Indicating that these parts will be replaced by new parts due to technical improvements and the current stock will not be available when these parts run out. Please check the description of technical improvements notice.

Number 4: supply as assembly. Indicating that these parts are assembly parts defined by manufacture process, which cannot be supplied as a single part.

Number 5: check other tables.

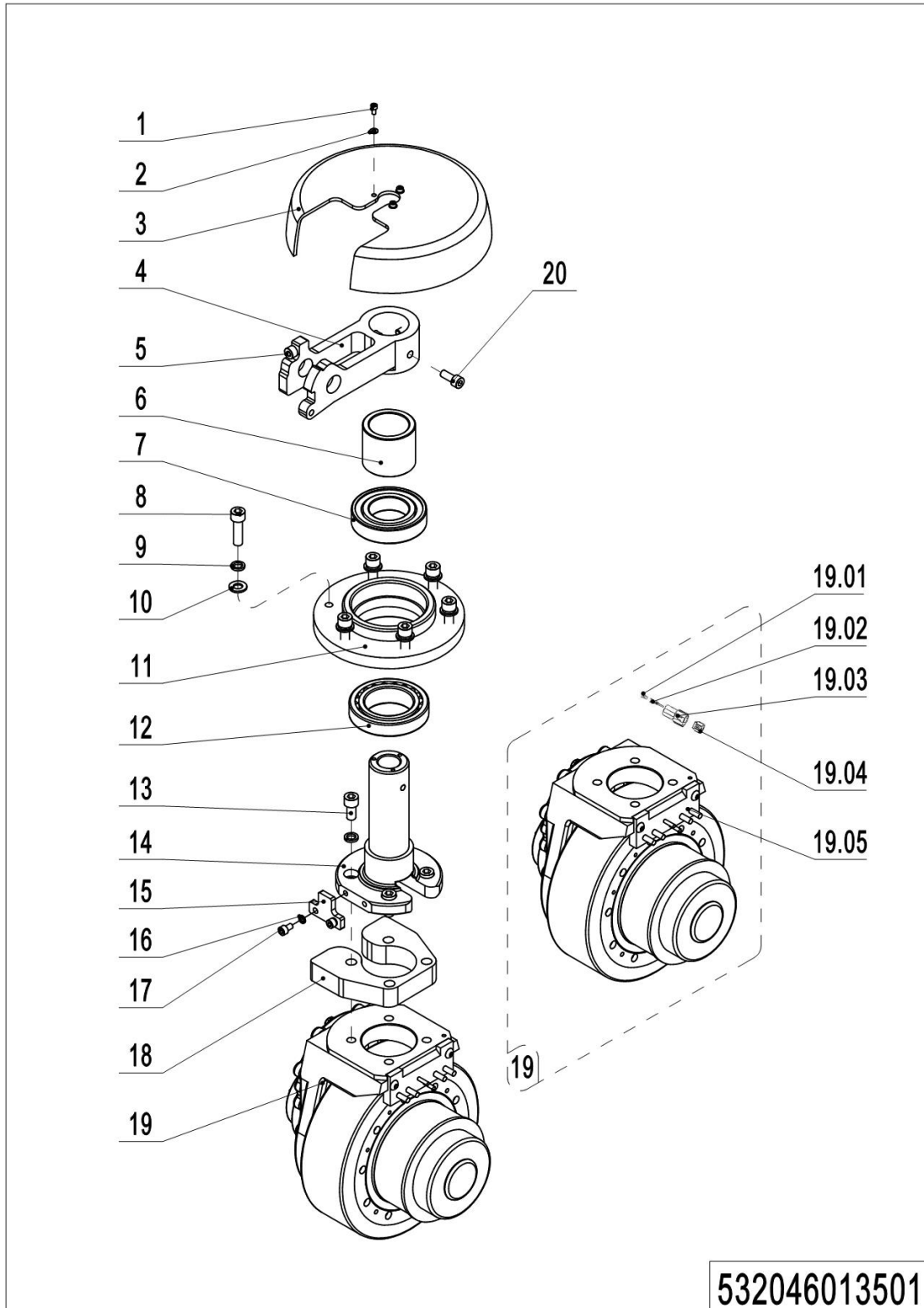
This parts manual is the property of Noblelift and can be shared under the confidential agreement only, Noblelift has the right to claim for compensation of any unauthorized use. Copy without permission is not allowed. Figures in the manual are not limited by the original design. Noblelift Intelligent Equipment Co., LTD reserves the right to improve the products for continuous technology progress.

Table of Contents

| | |
|---|----|
| Chapter 1: Drive System..... | 4 |
| 01 Drive Assembly (532046013501)..... | 4 |
| 02 Drive Unit (BT) (502346013501)..... | 6 |
| 02 Drive Unit (BT) (502346013501) Continuation | 8 |
| 03 Drive Unit (Amer) (502346013502)..... | 10 |
| 04 Drive Unit (ZD) (532046013502)..... | 12 |
| Chapter 2: Hydraulic System..... | 14 |
| 01 Hydraulic Components (532046024001)..... | 14 |
| 01 Hydraulic Components (532046024001) Continuation | 16 |
| 02 Hydraulic Unit (532046024002)..... | 18 |
| Chapter 3: Truck Frame | 20 |
| 01 Fork Carriage (532046038002)..... | 20 |
| 02 Chassis (Two Stage Mast) (532046021501) | 22 |
| 02 Chassis (Two Stage Mast) (532046021501) Continuation | 24 |
| 03 Chassis (Single Stage Mast) (532046021502)..... | 26 |
| Chapter 4: Steering System, Braking System, Wheels | 28 |
| 01 Tiller Unit (532046011001) | 28 |
| 02 Control Handle (532046011002) | 30 |
| 03 Load Wheel (532046017001) | 32 |
| 04 Caster (532046016501)..... | 34 |
| Chapter 5: Electrical Parts | 36 |
| 01 Wire Harness (532046033001) | 36 |
| 01 Wire Harness (532046033001) Continuation1..... | 38 |
| 01 Wire Harness (532046033001) Continuation 2..... | 40 |
| 02 Traction Battery (532046037001)..... | 42 |
| 03 Display Assembly (532046010001)..... | 44 |
| Chapter 6: Others | 46 |
| 01 Label and Decal (532046047001)..... | 46 |
| 02 Label and Decal (USA) (532046047002)..... | 48 |
| Appendix..... | 50 |
| 01 Electrical Circuit Diagram (BT) | 50 |
| 02 Electrical Circuit Diagram (AMER,ZD)..... | 51 |
| 03 Hydraulic Circuit Diagram | 52 |
| 04 Consumable Parts List | 53 |

Chapter 1: Drive System

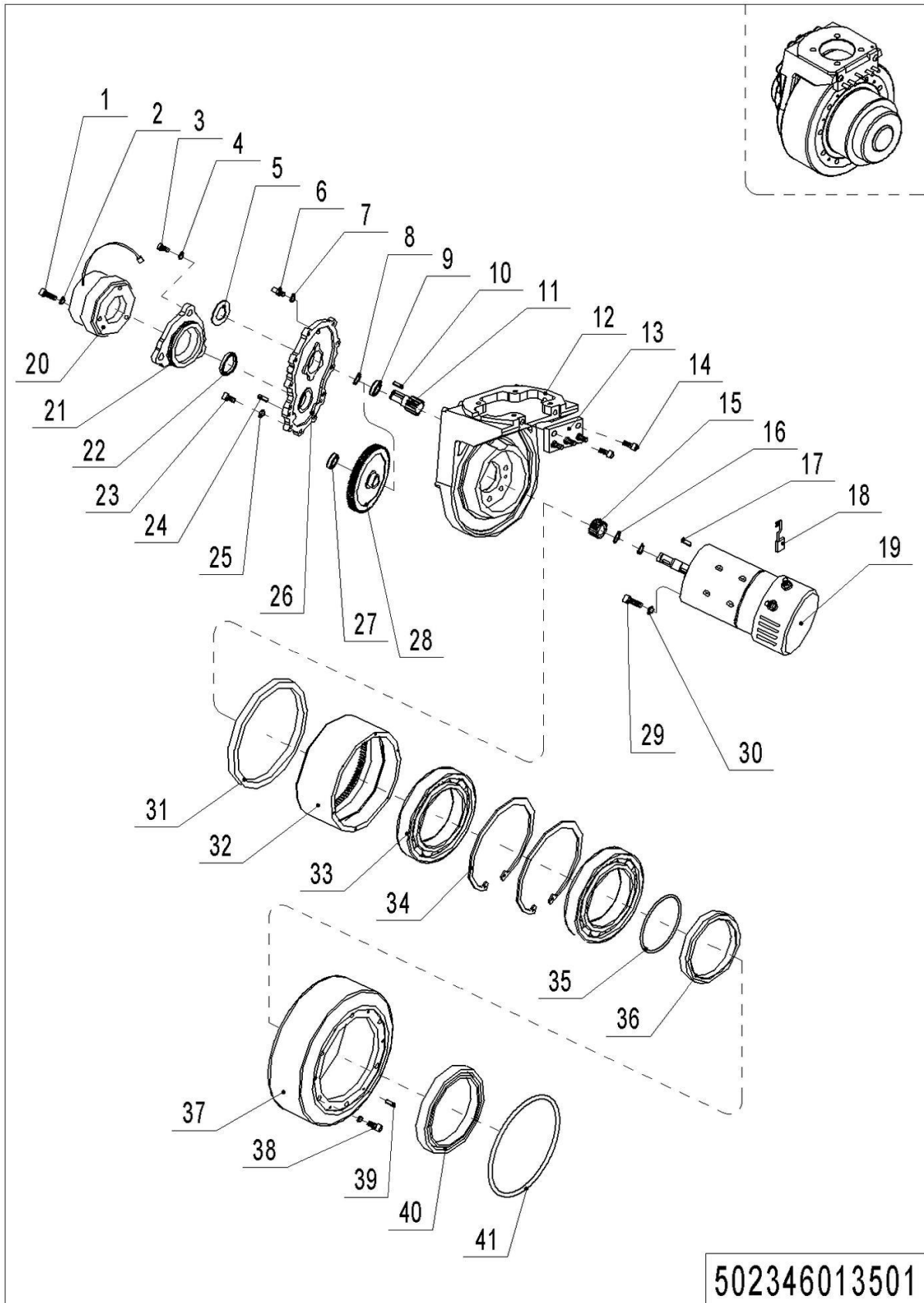
01 Drive Assembly (532046013501)



01 Drive Assembly (532046013501)

| No. | Item Code | Mark | Item Description | Qty. | Substitute | Note |
|-------|--------------|------|------------------|------|------------|-------------------------|
| 1 | 910200200012 | 1 | Screw | 3 | | |
| 2 | 910400100003 | 1 | Flat Washer | 3 | | |
| 3 | 532013520005 | 2 | Protective Cover | 3 | | Specify Color For Order |
| 4 | 532013520003 | 2 | Bracket | 1 | | |
| 5 | 910200200053 | 1 | Screw | 1 | | |
| 6 | 532013520004 | 2 | Bushing | 1 | | |
| 7 | 910700200024 | 1 | Bearing | 1 | | |
| 8 | 910200200078 | 1 | Screw | 6 | | |
| 9 | 910400500007 | 1 | Spring Washer | 10 | | |
| 10 | 910400100007 | 1 | Flat Washer | 6 | | |
| 11 | 532013520000 | 2 | Bracket | 1 | | |
| 12 | 910700600019 | 1 | Bearing | 1 | | |
| 13 | 910200200078 | 1 | Screw | 4 | | Amer |
| 13 | 910200200075 | 1 | Screw | 4 | | BT,ZD |
| 14 | 532013520001 | 2 | Flange | 1 | | |
| 15 | 532013520002 | 2 | Set Piece | 1 | | |
| 16 | 910400500005 | 1 | Spring Washer | 2 | | |
| 17 | 910200200035 | 1 | Screw | 2 | | |
| 18 | 502313520018 | 2 | Mounting Plate | 1 | | Only for Amer |
| 19 | 502398510029 | 2 | Drive Kits(BT) | 1 | | BT |
| 19 | 502398510030 | 2 | Drive Kits | 1 | | Amer |
| 19 | 532098510017 | 2 | Drive Kits | 1 | | ZD |
| 19.01 | 920400200018 | 2 | Connector | 1 | | |
| 19.02 | 920400200017 | 2 | Connector | 1 | | |
| 19.03 | 920400200003 | 2 | Connector | 1 | | |
| 19.04 | 920400200004 | 2 | Connector | 1 | | |
| 19.05 | ----- | 5 | Drive Unit | 1 | | Check 502346013501 |
| 19.05 | ----- | 5 | Drive Unit | 1 | | Check 502346013502 |
| 19.05 | ----- | 5 | Drive Unit | 1 | | Check 532046013502 |
| 20 | 910200200057 | 1 | Screw | 3 | | |

02 Drive Unit (BT) (502346013501)

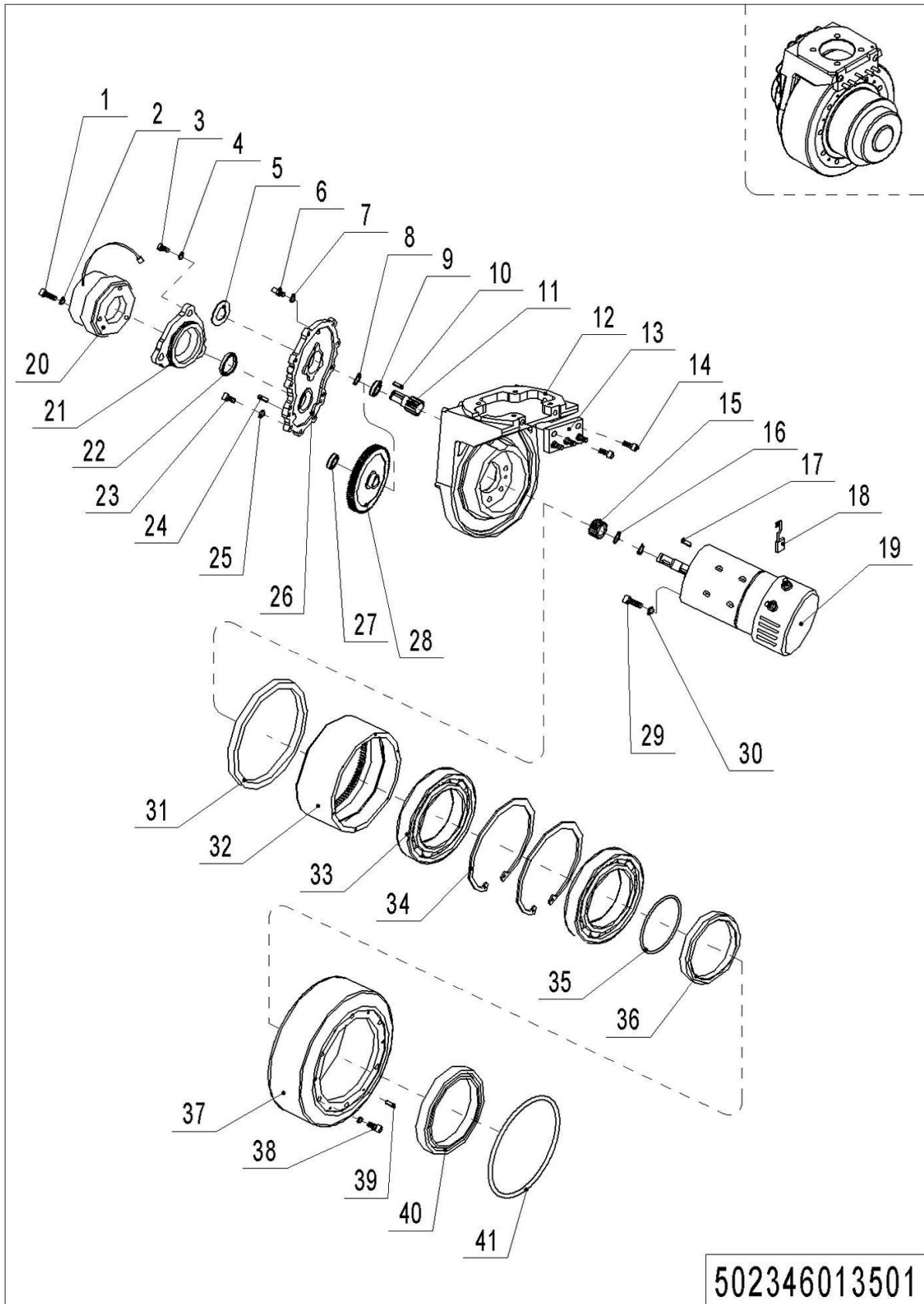


1= Supply as package. 2= Supply with constraints. 3= Phasing-out supply. 4= Supply as assembly. 5= Check other tables.

02 Drive Unit (BT) (502346013501)

| No. | Item Code | Mark | Item Description | Qty. | Substitute | Note |
|-----|--------------|------|------------------|------|------------|------|
| -- | 940900100003 | 2 | Drive Unit | 1 | | BT |
| 1 | 910200200019 | 2 | Screw | 3 | | |
| 2 | 910400500003 | 2 | Spring Washer | 3 | | |
| 3 | 910200300015 | 2 | Screw | 1 | | |
| 4 | 910400500004 | 2 | Spring Washer | 1 | | |
| 5 | 532098520026 | 2 | Cover | 1 | | |
| 6 | 532098520028 | 2 | Filler Pug | 1 | | |
| 7 | 910800900006 | 2 | Bonded Washer | 1 | | |
| 8 | 910401300008 | 2 | Circlip | 2 | | |
| 9 | 910700200018 | 2 | Bearing | 1 | | |
| 10 | 910600800006 | 2 | Flat Key | 1 | | |
| 11 | 532098520011 | 2 | Gear Shaft | 1 | | |
| 12 | 532098520012 | 2 | Gearbox | 1 | | |
| 13 | 532098520029 | 2 | Fixing Plate | 1 | | |
| 14 | 910200300013 | 2 | Screw | 2 | | |
| 15 | 532098520013 | 2 | Gear | 1 | | |
| 16 | 910401300006 | 2 | Circlip | 1 | | |
| 17 | 910600800005 | 2 | Flat Key | 1 | | |
| 18 | 532098520032 | | Carbon Brush | 1 | | |
| 19 | 532098510011 | 2 | Motor | 1 | | |
| 20 | 532098520025 | 2 | Brake | 1 | | |
| 21 | 532098520027 | 2 | Jacket | 1 | | |
| 22 | 532098520024 | 2 | Sealing Ring | 1 | | |
| 23 | 910200200035 | 2 | Screw | 11 | | |
| 24 | 910600200003 | 2 | Cylindrical Pin | 2 | | |
| 25 | 910400500005 | 2 | Spring Washer | 11 | | |
| 26 | 532098520023 | 2 | Gear Box Cover | 1 | | |
| 27 | 910700200046 | 2 | Bearing | 1 | | |
| 28 | 532098520016 | 2 | Gear | 1 | | |
| 29 | 910200200058 | 2 | Screw | 5 | | |

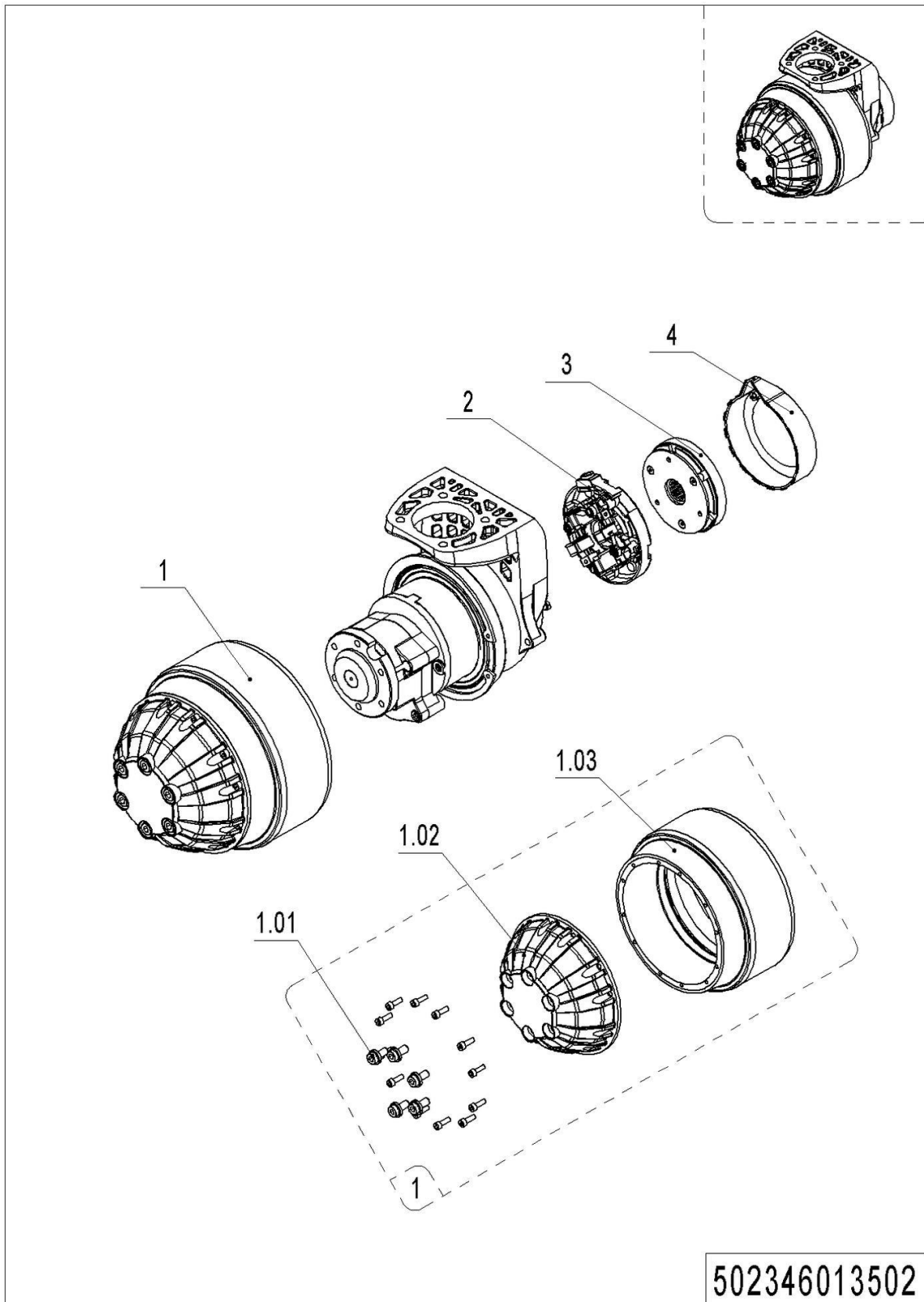
02 Drive Unit (BT) (502346013501) Continuation



1= Supply as package. 2= Supply with constraints. 3= Phasing-out supply. 4= Supply as assembly. 5= Check other tables.

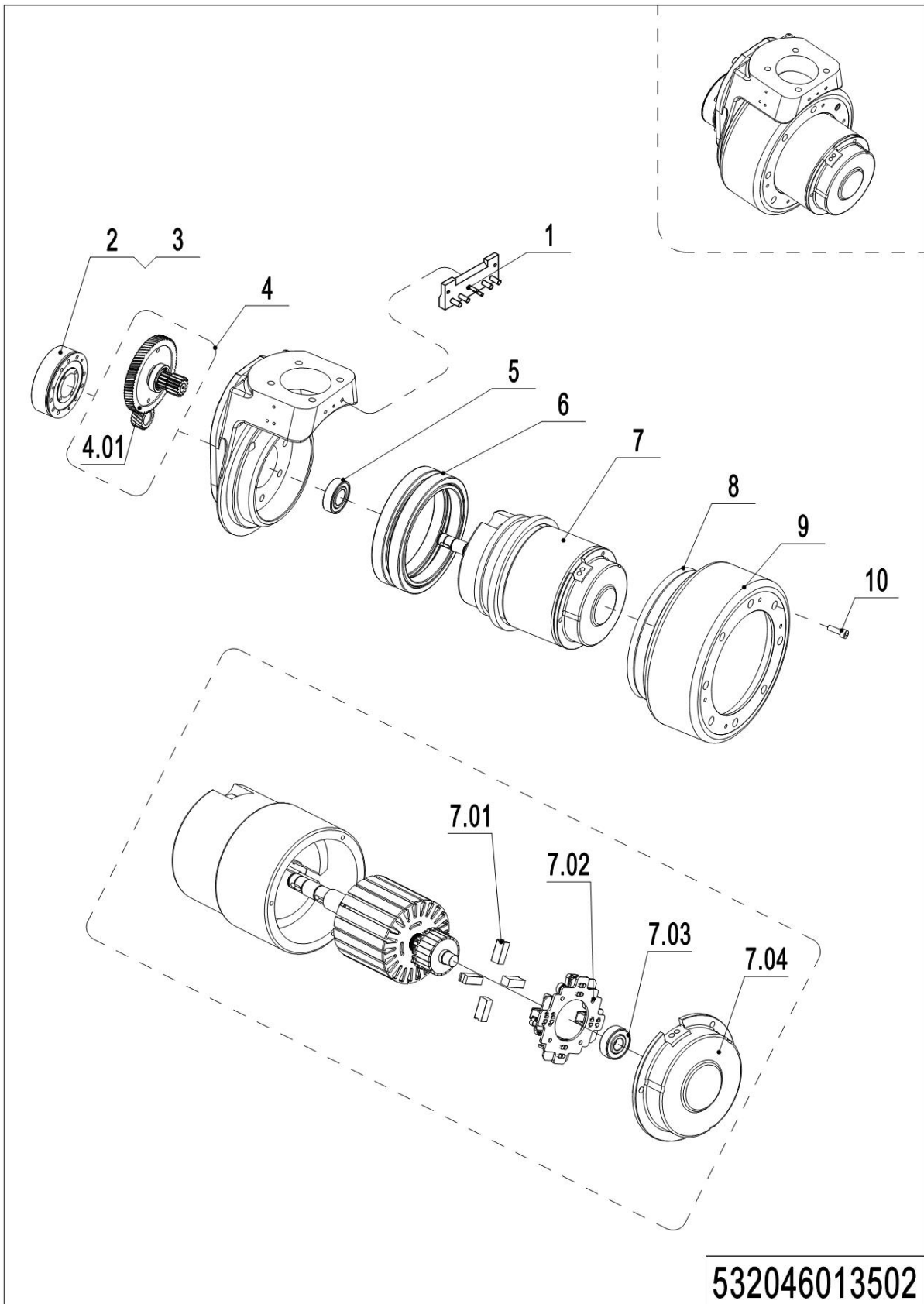
02 Drive Unit (BT) (502346013501) Continuation

| No. | Item Code | Mark | Item Description | Qty. | Substitute | Note |
|-----|--------------|------|------------------|------|------------|------|
| 30 | 532098520015 | 2 | Washer | 5 | | |
| 31 | 910800700006 | 2 | Oil Seal | 1 | | |
| 32 | 532098520018 | 2 | Gear Ring | 1 | | |
| 33 | 910700200044 | 2 | Bearing | 2 | | |
| 34 | 910401300031 | 2 | Circlip | 2 | | |
| 35 | 910800100091 | 2 | O-Ring | 1 | | |
| 36 | 532098520019 | 2 | Mounting Base | 1 | | |
| 37 | 532098520020 | | Wheel | 1 | | |
| 38 | 532098520021 | 2 | Screw | 10 | | |
| 39 | 910600100010 | 2 | Cylindrical Pin | 2 | | |
| 40 | 532098520022 | 2 | Sealing Ring | 1 | | |
| 41 | 910800100092 | 2 | O-Ring | 1 | | |

03 Drive Unit (Amer) (502346013502)

03 Drive Unit (Amer) (502346013502)

| No. | Item Code | Mark | Item Description | Qty. | Substitute | Note |
|------|--------------|------|------------------|------|------------|------|
| -- | 940900100001 | 2 | Drive Unit | 1 | | Amer |
| 1 | 502398510001 | 2 | Cover Kit | 1 | | |
| 1.01 | 502398510007 | 2 | Screw | 1 | | |
| 1.02 | 502398520004 | 2 | Cover Kit | 1 | | |
| 1.03 | 502398520002 | 2 | Tyre | 1 | | |
| 2 | 502398510006 | 2 | End Cap | 1 | | |
| 3 | 502398510005 | 2 | Brake | 1 | | |
| 4 | 502398520001 | 2 | Brake Cover | 1 | | |

04 Drive Unit (ZD) (532046013502)

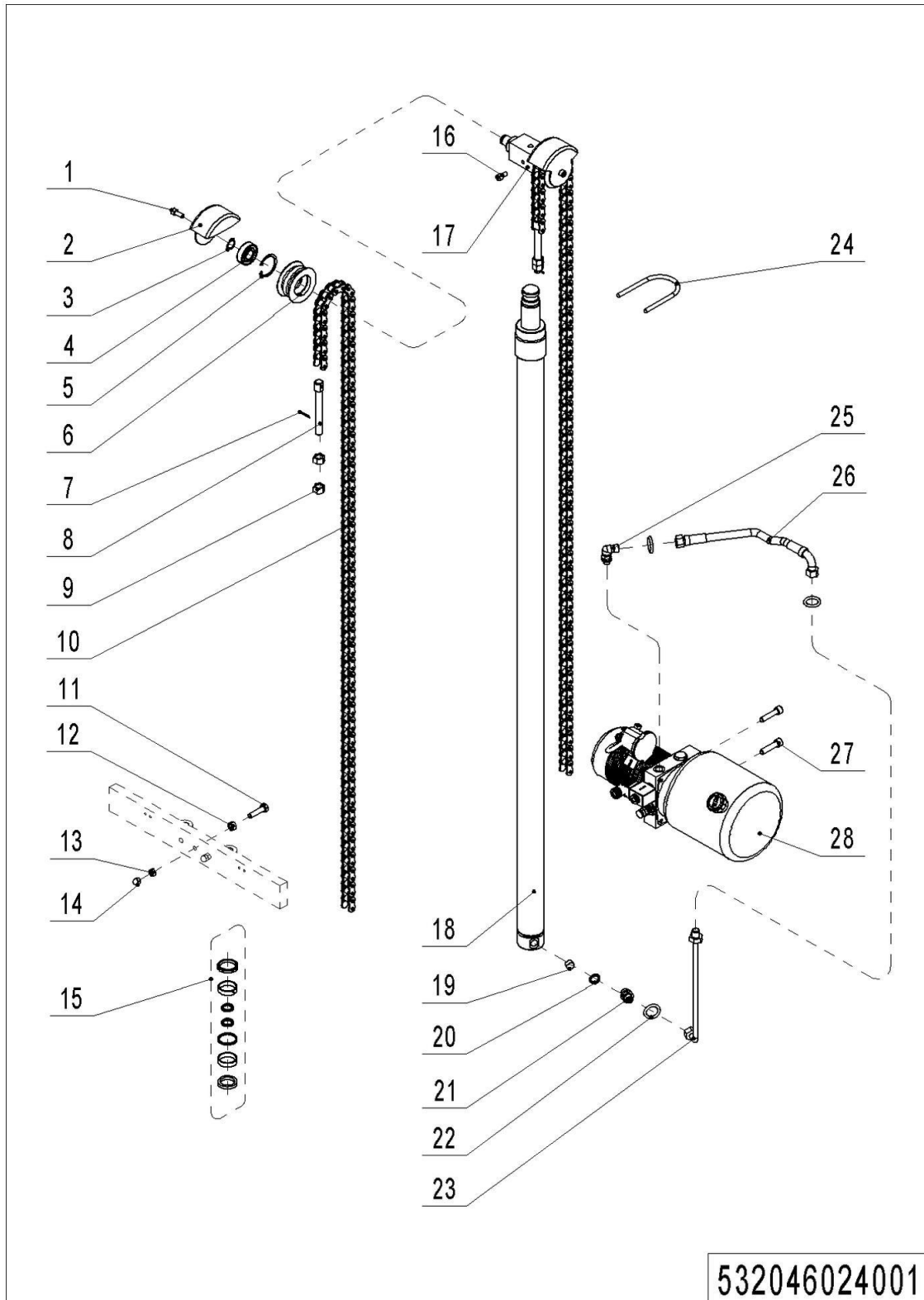
1= Supply as package. 2= Supply with constraints. 3= Phasing-out supply. 4= Supply as assembly. 5= Check other tables.

04 Drive Unit (ZD) (532046013502)

| No. | Item Code | Mark | Item Description | Qty. | Substitute | Note |
|------|--------------|------|---------------------|------|------------|------|
| -- | 940900100004 | 2 | Drive Unit | 1 | | |
| 1 | 532098520034 | 2 | Terminal | 1 | | |
| 2 | 508098520002 | 2 | Brake | 1 | | |
| 3 | 508098520040 | 2 | Rubber Strip | 1 | | |
| 4 | 508098510015 | 2 | Gear Components | 1 | | |
| 4.01 | 508098520004 | 2 | Gear | 1 | | |
| 5 | 910700200004 | 1 | Bearing | 1 | | |
| 6 | 508098520011 | 2 | Gear Ring | 1 | | |
| 7 | 508098510016 | 2 | Motor | 1 | | |
| 7.01 | 508098520000 | 2 | Carbon Brush | 4 | | |
| 7.02 | 508098520001 | 2 | Carbon Brush Holder | 1 | | |
| 7.03 | 910700200016 | 1 | Bearing | 1 | | |
| 7.04 | 508098520036 | 2 | End Cap | 1 | | |
| 8 | 508098520032 | 2 | Seal | 1 | | |
| 9 | 508098520003 | 2 | Wheel | 1 | | |
| 10 | 910200200167 | 2 | Screw Kits | 8 | | |

Chapter 2: Hydraulic System

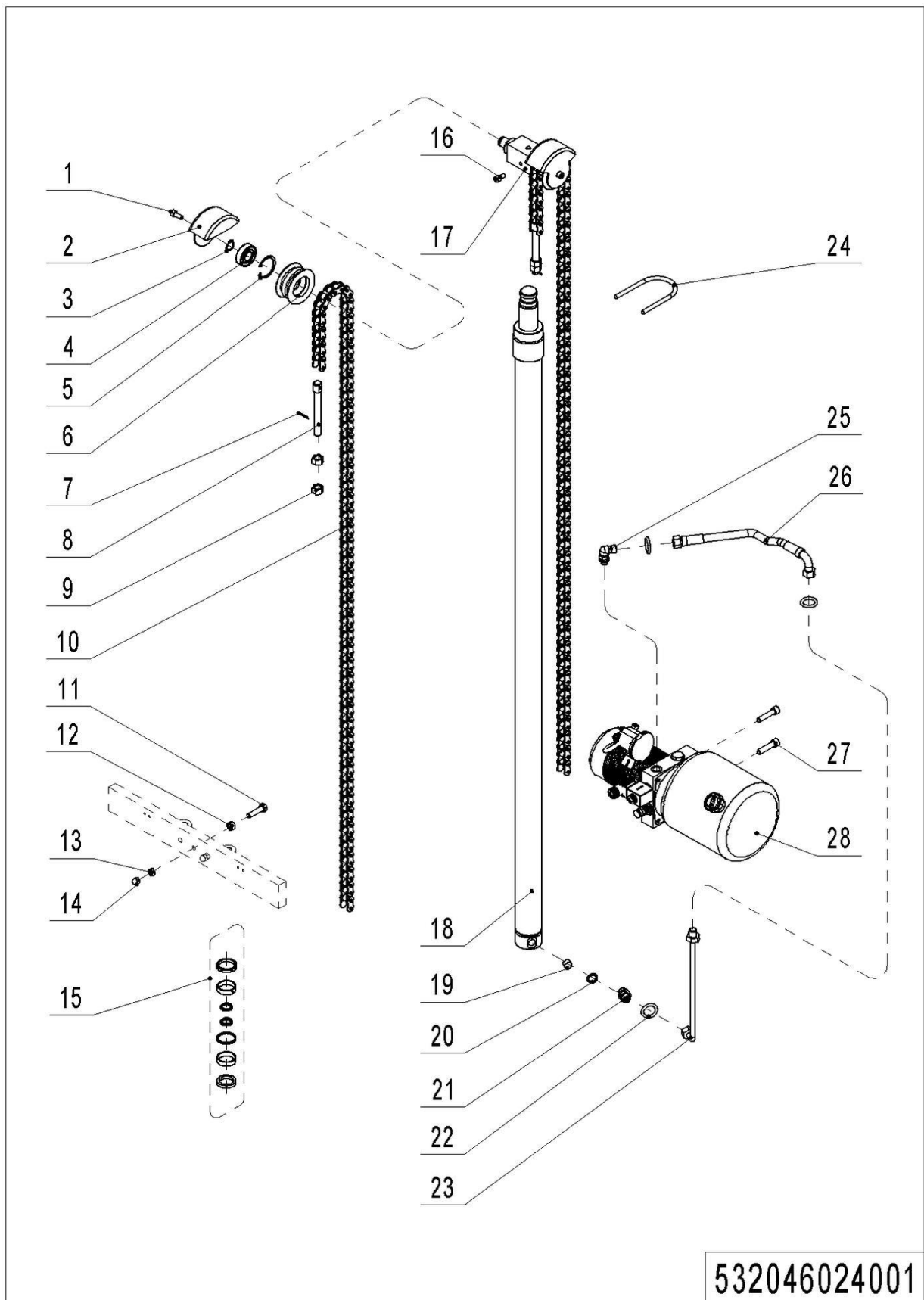
01 Hydraulic Components (532046024001)



01 Hydraulic Components (532046024001)

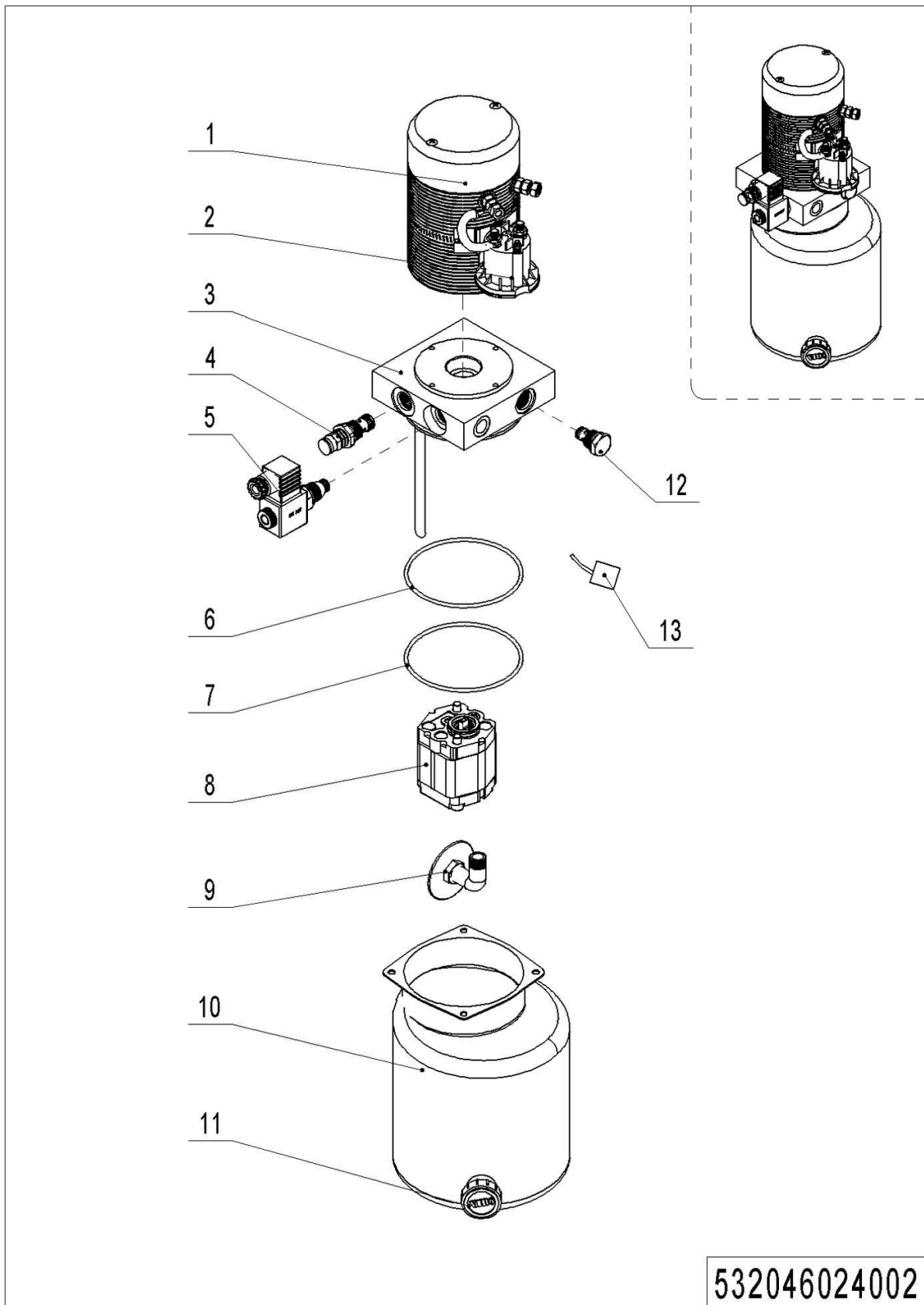
| No. | Item Code | Mark | Item Description | Qty. | Substitute | Note |
|-----|--------------|------|------------------|------|------------|-------------------|
| 1 | 910200200057 | 1 | Screw | 2 | | |
| 2 | 532024020003 | 2 | Protective Cover | 2 | | |
| 3 | 910401300011 | 1 | Circlip | 2 | | |
| 4 | 910700200019 | 1 | Bearing | 2 | | |
| 5 | 910401400013 | 1 | Circlip | 2 | | |
| 6 | 940200400009 | 2 | Sprocket | 2 | | |
| 7 | 910600600032 | 1 | Cotter Pin | 2 | | |
| 8 | 532024020002 | 2 | Chain Anchor | 2 | | |
| 9 | 910300100009 | 1 | Nut | 4 | | |
| 10 | 532024010011 | 2 | Chain | 2 | | Lift Height 1600 |
| 10 | 532024010010 | 2 | Chain | 2 | | Lift Height 2000 |
| 10 | 532024010013 | 2 | Chain | 2 | | Lift Height 2900 |
| 10 | 532024010012 | 2 | Chain | 2 | | Lift Height 3200 |
| 10 | 532024010009 | 2 | Chain | 2 | | Lift Height 3500 |
| 11 | 910100300039 | 1 | Bolt | 1 | | |
| 12 | 910300100007 | 1 | Nut | 1 | | |
| 13 | 910300100006 | 1 | Nut | 2 | | |
| 14 | 910301000005 | 1 | Nut | 2 | | |
| 15 | 532098510010 | | Seal Kit | 1 | | |
| 16 | 910200200055 | 1 | Screw | 1 | | |
| 17 | 532024020001 | 2 | Footstock | 1 | | Single Stage Mast |
| 18 | 532024010001 | 2 | Cylinder | 1 | | Lift Height 1600 |
| 18 | 532024010000 | 2 | Cylinder | 1 | | Lift Height 2000 |
| 18 | 532024010002 | 2 | Cylinder | 1 | | Lift Height 2900 |
| 18 | 532024010004 | 2 | Cylinder | 1 | | Lift Height 3200 |
| 18 | 532024010003 | 2 | Cylinder | 1 | | Lift Height 3500 |
| 19 | 950600300001 | 2 | Safety Valve | 1 | | |
| 20 | 910800900005 | 1 | Bonded Washer | 1 | | |
| 21 | 950400400014 | 2 | Joint | 1 | | |
| 22 | 910800100033 | | O-Ring | 3 | | |

01 Hydraulic Components (532046024001) Continuation



01 Hydraulic Components (532046024001) Continuation

| No. | Item Code | Mark | Item Description | Qty. | Substitute | Note |
|-----|--------------|------|------------------|------|------------|--------------------|
| 23 | 532024010005 | 2 | Steel Tube | 1 | | |
| 24 | 532024010007 | 2 | Bolt | 1 | | |
| 25 | 950401100006 | 2 | Joint | 1 | | |
| 26 | 532024010006 | 2 | Hose | 1 | | |
| 27 | 910200200080 | 1 | Screw | 2 | | |
| 28 | ----- | 5 | Pump Unit | 1 | | Check 532046024002 |

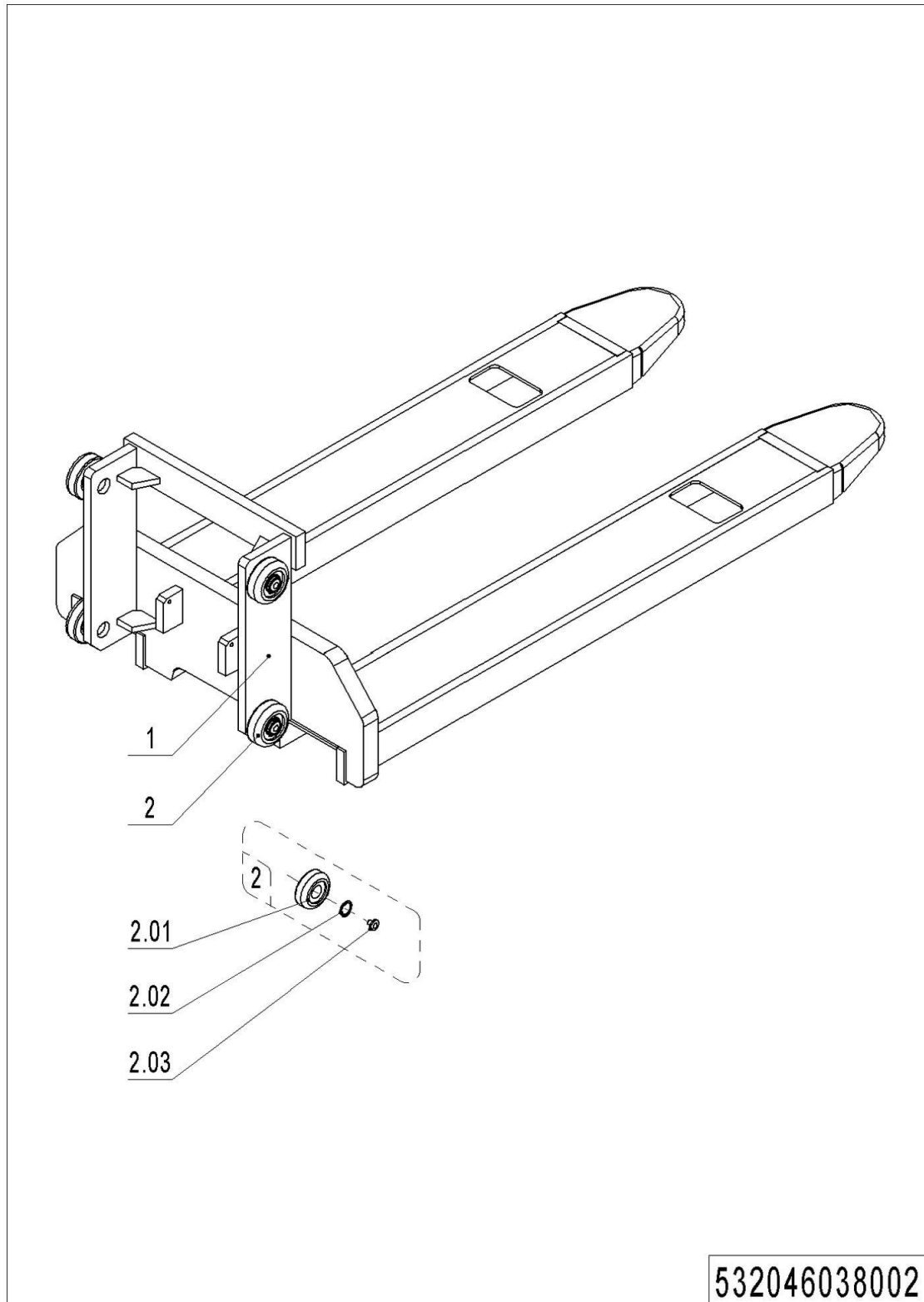
02 Hydraulic Unit (532046024002)

02 Hydraulic Unit (532046024002)

| No. | Item Code | Mark | Item Description | Qty. | Substitute | Note |
|-----|--------------|------|------------------|------|------------|------|
| -- | 950900100022 | 2 | Pump Unit | 1 | | |
| 1 | 532098510001 | 2 | Motor | 1 | | |
| 2 | 532098510002 | 2 | Switch | 1 | | |
| 3 | 532098510004 | 2 | Valve Block | 1 | | |
| 4 | 532098510007 | 2 | Overflow Valve | 1 | | |
| 5 | 532098510006 | 2 | Magnetic Valve | 1 | | |
| 6 | 532098520001 | | O-Ring | 1 | | |
| 7 | 532098520002 | | O-Ring | 1 | | |
| 8 | 532098510000 | 2 | Gear Pump | 1 | | |
| 9 | 532098520003 | 2 | Oil Tube | 1 | | |
| 10 | 532098520004 | 2 | Tank | 1 | | |
| 11 | 532098510005 | 2 | Cap-Tank | 1 | | |
| 12 | 532098510003 | 2 | Check Valve | 1 | | |
| 13 | 532098520033 | 2 | Carbon Brush | 1 | | |

Chapter 3: Truck Frame

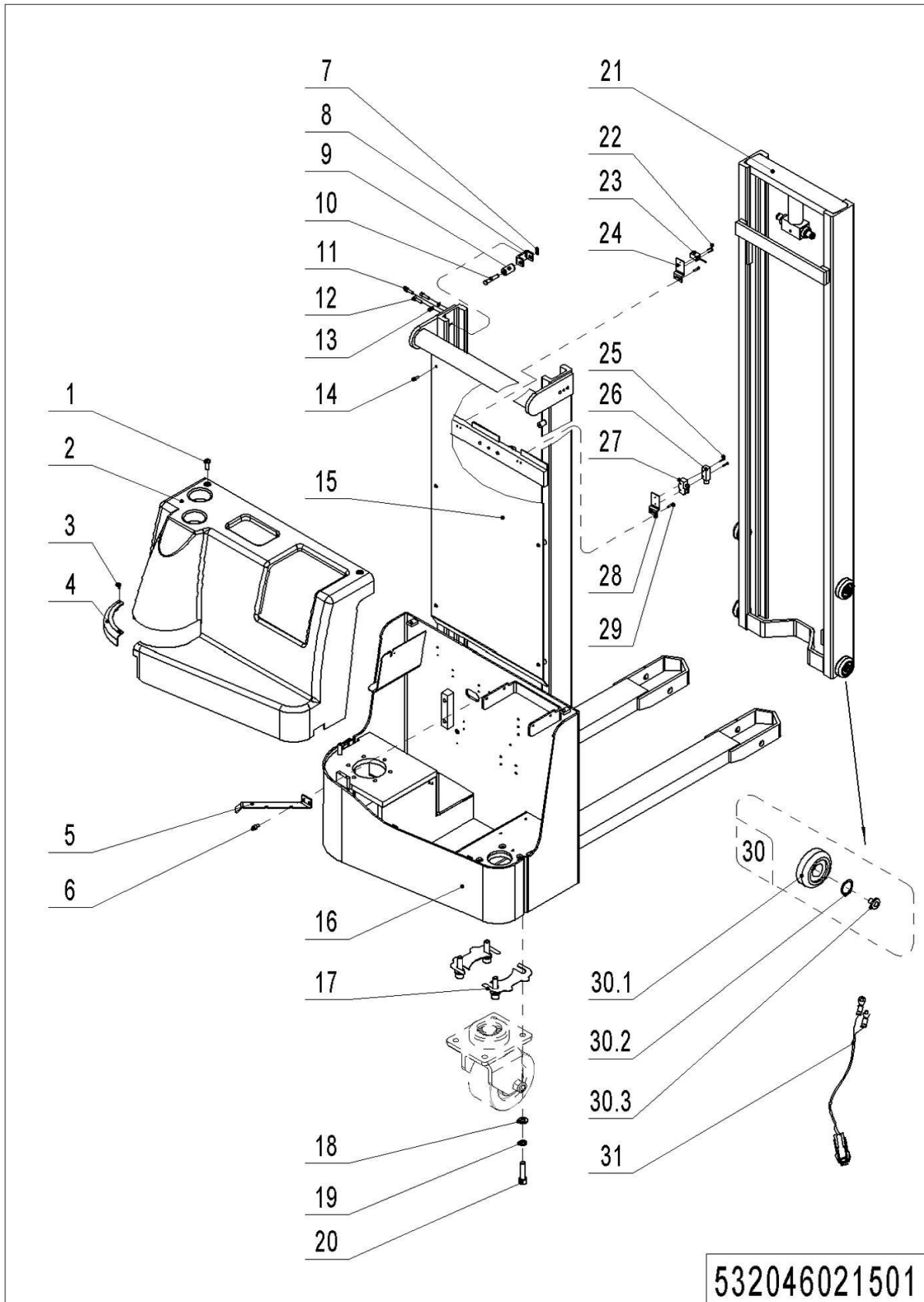
01 Fork Carriage (532046038002)



01 Fork Carriage (532046038002)

| No. | Item Code | Mark | Item Description | Qty. | Substitute | Note |
|------|--------------|------|------------------|------|------------|------------------|
| 1 | 532038010000 | 2 | Fork(570x1150) | 1 | | Single mast |
| 1 | 532038010002 | 2 | Fork(685x1150) | 1 | | Single mast |
| 1 | 532038010001 | 2 | Fork(570x1150) | 1 | | Two-stage mast , |
| 1 | 532038010003 | 2 | Fork(685x1150) | 1 | | Two-stage mast, |
| 2 | 532098510008 | 2 | Wheel | 4 | | |
| 2.01 | 400238020020 | | Roller | 4 | | |
| 2.02 | 910401300014 | 1 | Circlip | 4 | | |
| 2.03 | 532038020022 | 2 | Subplate | 4 | | |

02 Chassis (Two Stage Mast) (532046021501)

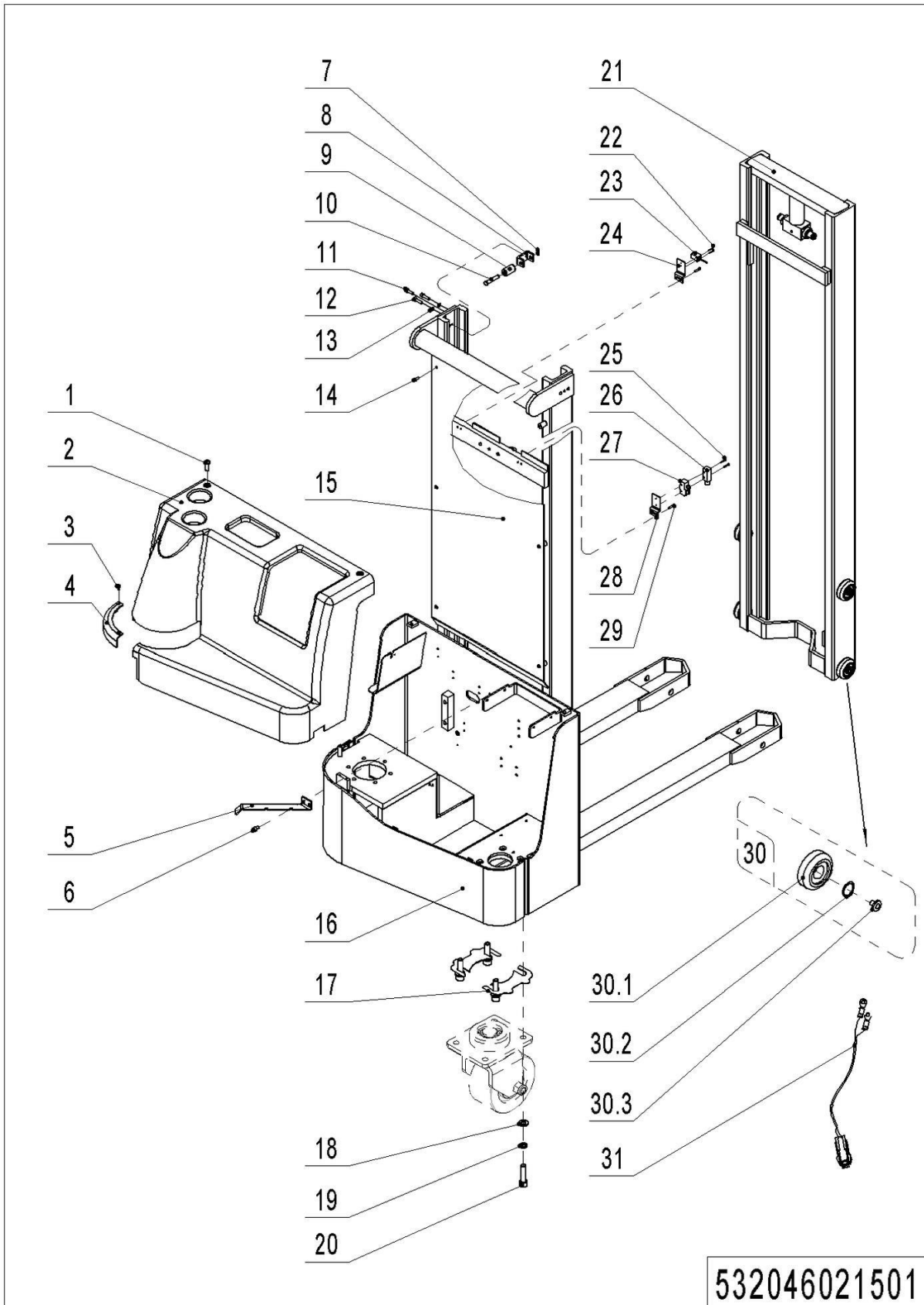


532046021501

02 Chassis (Two Stage Mast) (532046021501)

| No. | Item Code | Mark | Item Description | Qty. | Substitute | Note |
|-----|--------------|------|------------------------|------|------------|-------------------------|
| 1 | 941100100004 | 1 | Screw | 2 | | |
| 2 | 532021520046 | 2 | Protective Cover | 1 | | Specify Color For Order |
| 3 | 910200200022 | 1 | Screw | 2 | | |
| 4 | 532021520059 | 2 | Arc Plate | 1 | | Specify Color For Order |
| 5 | 532021520060 | 2 | Fixing Mount | 1 | | |
| 6 | 910200200053 | 1 | Screw | 2 | | |
| 7 | 910401300003 | 1 | Circlip | 2 | | |
| 8 | 532021520075 | 2 | Wheel Mount | 2 | | |
| 9 | 401744020000 | 2 | Roller | 2 | | |
| 10 | 401744020001 | 2 | Pin | 2 | | |
| 11 | 910200200058 | 1 | Screw | 2 | | |
| 12 | 910200200059 | 1 | Screw | 4 | | |
| 13 | 910400500006 | 1 | Spring Washer | 4 | | |
| 14 | 910200300018 | 1 | Screw | 8 | | |
| 15 | 532021520048 | 2 | Guard Plate | 1 | | Lift Height 2900 |
| 15 | 532021520050 | 2 | Guard Plate | 1 | | Lift Height 3200 |
| 15 | 532021520049 | 2 | Guard Plate | 1 | | Lift Height 3500 |
| 16 | 532021510041 | 2 | Chassis(2900,570x1150) | 1 | | Two-stage mast |
| 16 | 532021510045 | 2 | Chassis(2900,685x1150) | 1 | | Two-stage mast |
| 16 | 532021510043 | 2 | Chassis(3200,570x1150) | 1 | | Two-stage mast |
| 16 | 532021510047 | 2 | Chassis(3200,685x1150) | 1 | | Two-stage mast |
| 16 | 532021510042 | 2 | Chassis(3500,570x1150) | 1 | | Two-stage mast |
| 16 | 532021510046 | 2 | Chassis(3500,685x1150) | 1 | | Two-stage mast |
| 17 | 532021520061 | 2 | Pad | 4 | | Optional Quantity |
| 18 | 910400100007 | 1 | Flat Washer | 8 | | |
| 19 | 910400500007 | 1 | Spring Washer | 8 | | |
| 20 | 910200200079 | 1 | Screw | 8 | | |
| 21 | 532044010000 | 2 | Inner Mast(2900) | 1 | | |
| 21 | 532044010002 | 2 | Inner Mast(3200) | 1 | | |
| 21 | 532044010001 | 2 | Inner Mast(3500) | 1 | | |

02 Chassis (Two Stage Mast) (532046021501) Continuation

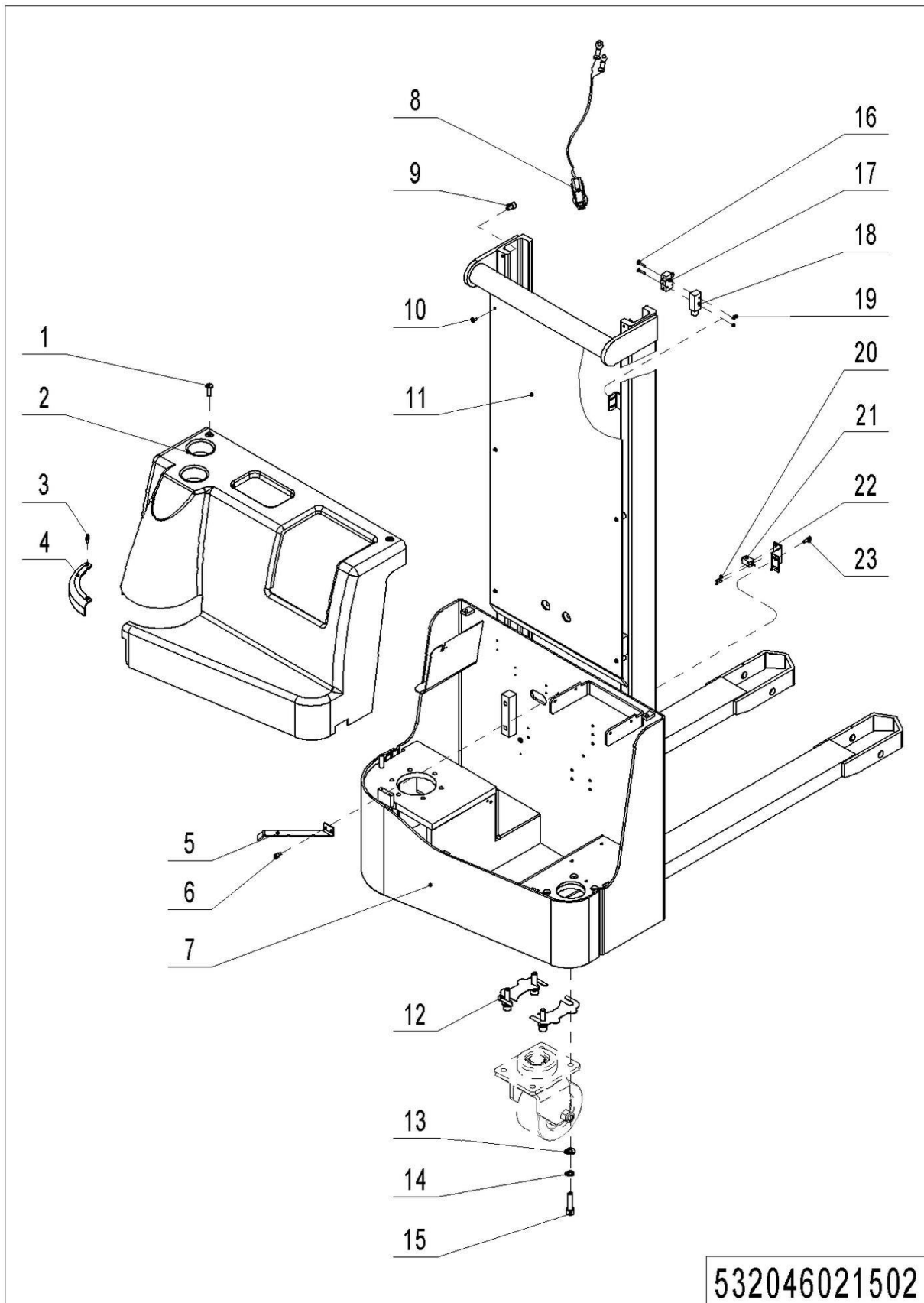


1= Supply as package. 2= Supply with constraints. 3= Phasing-out supply. 4= Supply as assembly. 5= Check other tables.

02 Chassis (Two Stage Mast) (532046021501) Continuation

| No. | Item Code | Mark | Item Description | Qty. | Substitute | Note |
|-------|--------------|------|------------------|------|------------|------|
| 22 | 910200200005 | 1 | Screw | 2 | | |
| 23 | 532021510032 | | Proximity Switch | 1 | | |
| 24 | 532021520054 | 2 | Fixing Plate | 1 | | |
| 25 | 910200200017 | 1 | Screw | 1 | | |
| 26 | 920200300008 | 2 | Protective Cover | 1 | | |
| 27 | 920200300001 | | Microswitch | 1 | | |
| 28 | 532021520052 | 2 | Fixing Plate | 1 | | |
| 29 | 910200200032 | 1 | Screw | 4 | | |
| 30 | 532098510008 | | Wheel | 1 | | |
| 30.01 | 400238020020 | | Roller | 4 | | |
| 30.02 | 910401300014 | 1 | Circlip | 4 | | |
| 30.03 | 532038020022 | 2 | Subplate | 4 | | |
| 31 | 532033010006 | 2 | Wire Harness | 1 | | |

03 Chassis (Single Stage Mast) (532046021502)



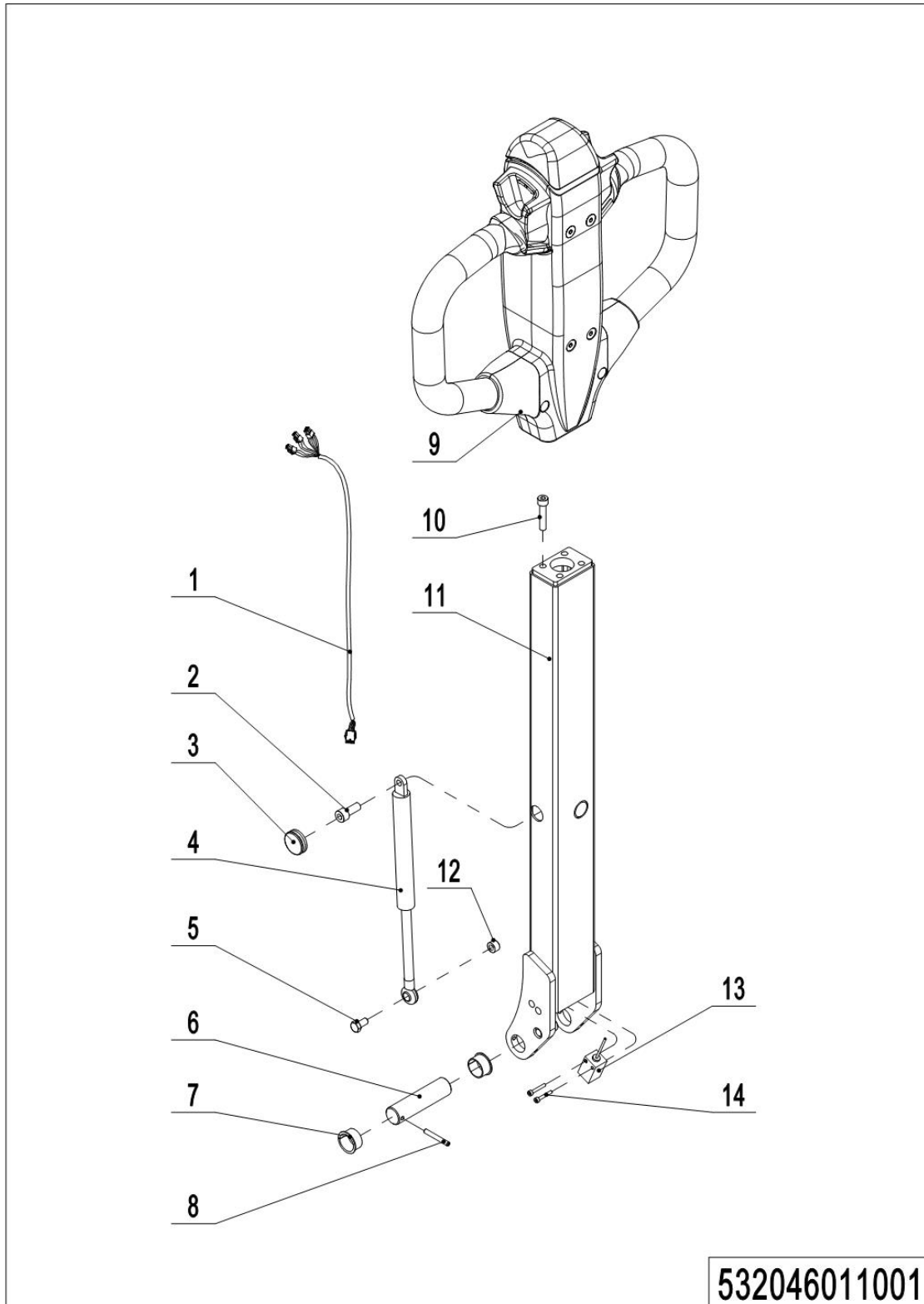
532046021502

03 Chassis (Single Stage Mast) (532046021502)

| No. | Item Code | Mark | Item Description | Qty. | Substitute | Note |
|-----|--------------|------|------------------------|------|------------|-------------------------|
| 1 | 941100100004 | 1 | Screw | 2 | | |
| 2 | 532021520046 | 2 | Protective Cover | 1 | | Specify Color For Order |
| 3 | 910200200022 | 1 | Screw | 2 | | |
| 4 | 532021520059 | 2 | Arc Plate | 1 | | Specify Color For Order |
| 5 | 532021520060 | 2 | Fixing Mount | 1 | | |
| 6 | 910200200053 | 1 | Screw | 2 | | |
| 7 | 532021510040 | 2 | Chassis(2000,570x1150) | 1 | | |
| 7 | 532021510049 | 2 | Chassis(1600,570x1150) | 1 | | |
| 7 | 532021510044 | 2 | Chassis(2000,685x1150) | 1 | | |
| 7 | 532021510050 | 2 | Chassis(1600,685x1150) | 1 | | |
| 8 | 532033010007 | 2 | Wire Harness | 1 | | Lift Height 2000 |
| 8 | 532033010008 | 2 | Wire Harness | 1 | | Lift Height 1600 |
| 9 | 910200200074 | 1 | Screw | 2 | | |
| 10 | 910200300018 | 1 | Screw | 6 | | |
| 11 | 532021520057 | 2 | Guard Plate | 1 | | Lift Height 2000 |
| 11 | 532021520058 | 2 | Guard Plate | 1 | | Lift Height 1600 |
| 12 | 532021520061 | 2 | Pad | 4 | | Optional Quantity |
| 13 | 910400100007 | 1 | Flat Washer | 8 | | |
| 14 | 910400500007 | 1 | Spring Washer | 8 | | |
| 15 | 910200200079 | 1 | Screw | 8 | | |
| 16 | 910200400007 | 1 | Screw | 2 | | |
| 17 | 920200300001 | | Microswitch | 1 | | |
| 18 | 920200300008 | 2 | Protective Cover | 1 | | |
| 19 | 910300500001 | 2 | Nut | 2 | | |
| 20 | 910200200005 | 1 | Screw | 2 | | |
| 21 | 532011010004 | | Proximity Switch | 1 | | |
| 22 | 532021520053 | 2 | Fixing Plate | 1 | | |
| 23 | 910200200032 | | Screw | 2 | | |

Chapter 4: Steering System, Braking System, Wheels

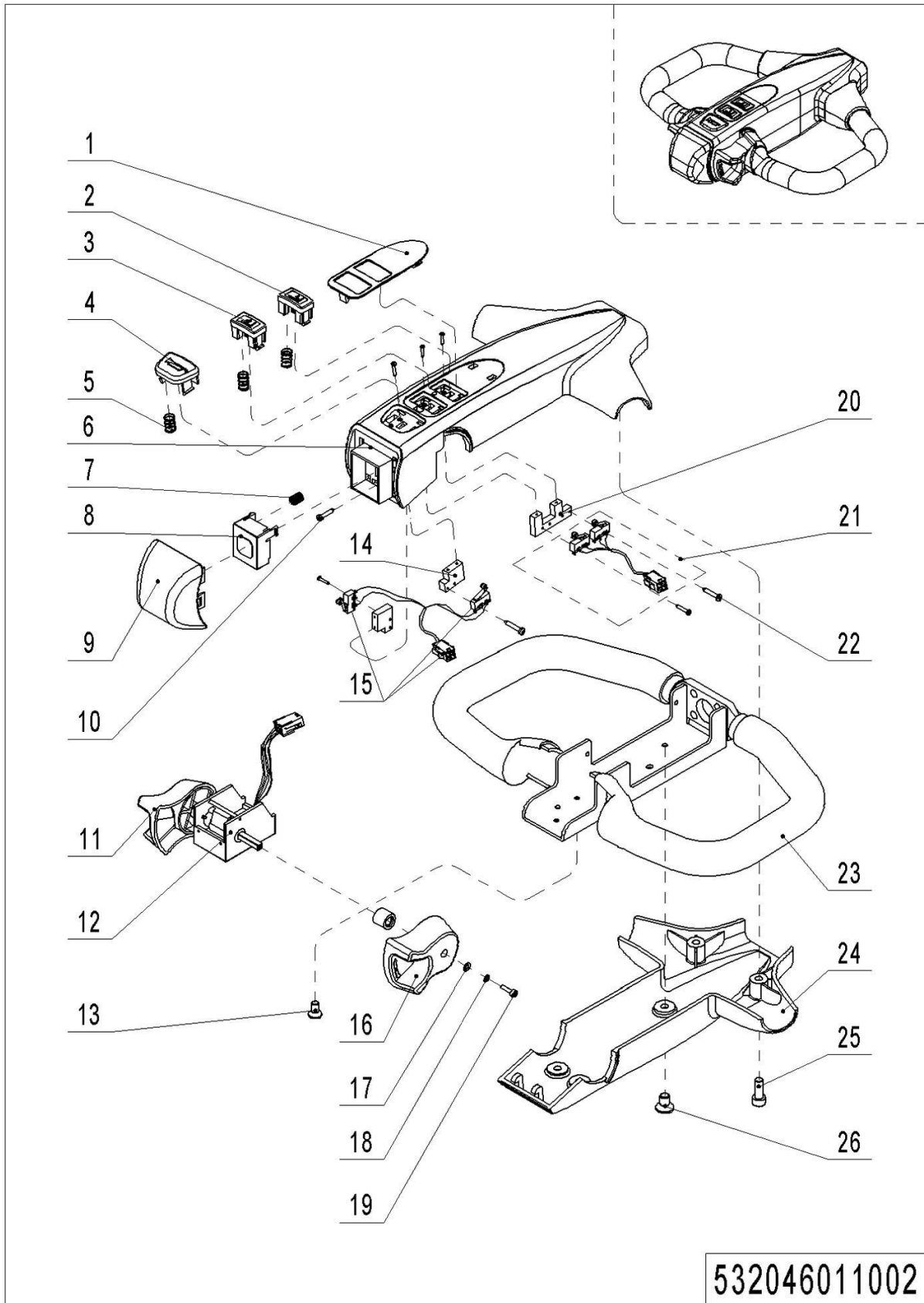
01 Tiller Unit (532046011001)



01 Tiller Unit (532046011001)

| No. | Item Code | Mark | Item Description | Qty. | Substitute | Note |
|-----|--------------|------|------------------|------|------------|--------------------|
| 1 | 532033010004 | 2 | Wire Harness | 1 | | |
| 2 | 941100400001 | 1 | Screw | 1 | | |
| 3 | 502311020009 | 2 | Close Plate | 1 | | |
| 4 | 940400100052 | | Air Spring | 1 | | |
| 5 | 910200300022 | | Bolt | 1 | | |
| 6 | 403511020003 | 2 | Axle | 1 | | |
| 7 | 940500200005 | | Bushing | 2 | | |
| 8 | 910600400017 | 1 | Spring Pin | 1 | | |
| 9 | ----- | 5 | Control Handle | 1 | | Check 532046011002 |
| 10 | 910200200058 | | Screw | 4 | | |
| 11 | 532011010000 | 2 | Tiller | 1 | | |
| 12 | 502911020025 | | Spacer Bush | 1 | | |
| 13 | 532011010004 | | Proximity Switch | 1 | | |
| 14 | 910200200005 | 1 | Screw | 2 | | |

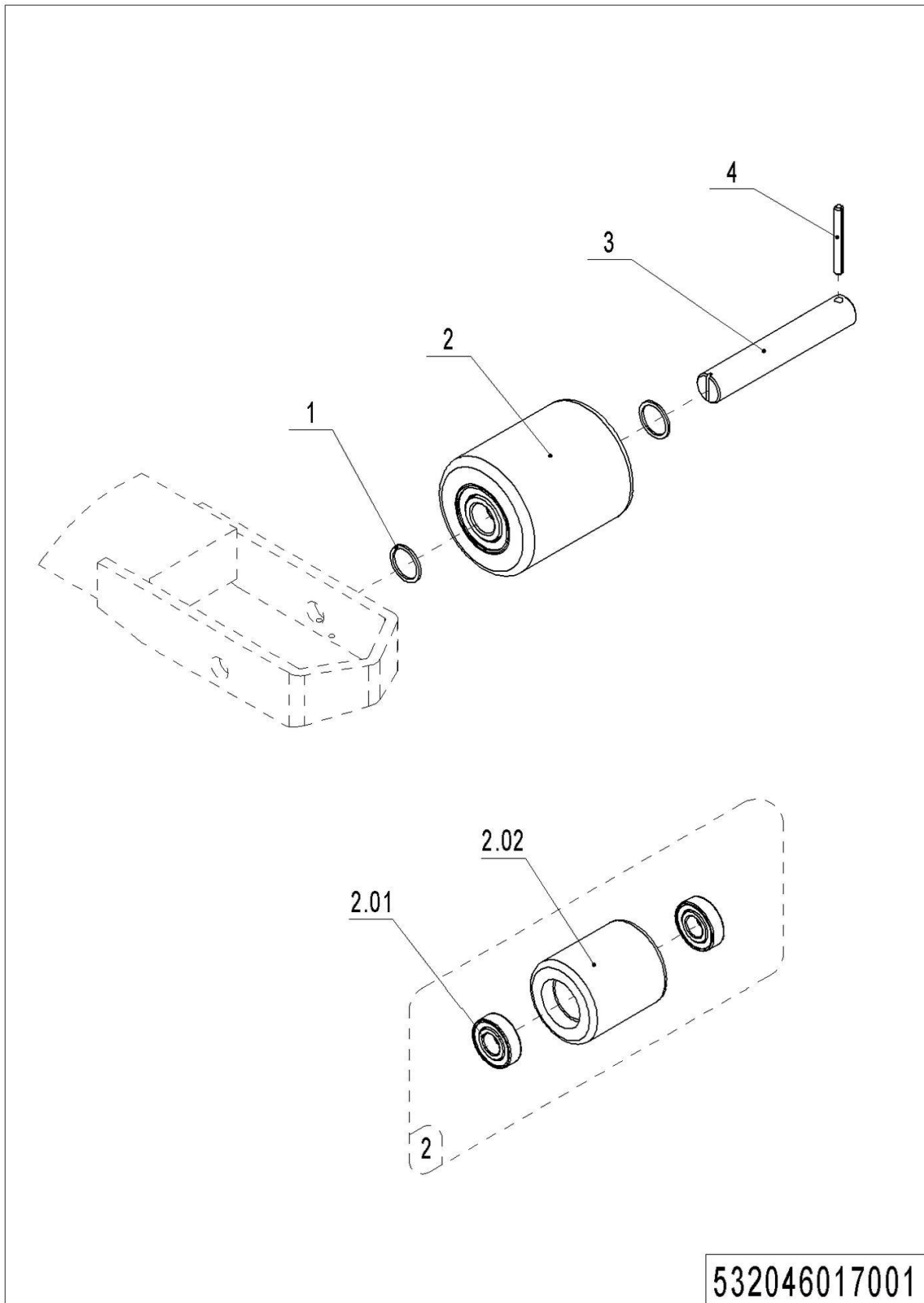
02 Control Handle (532046011002)



1= Supply as package. 2= Supply with constraints. 3= Phasing-out supply. 4= Supply as assembly. 5= Check other tables.

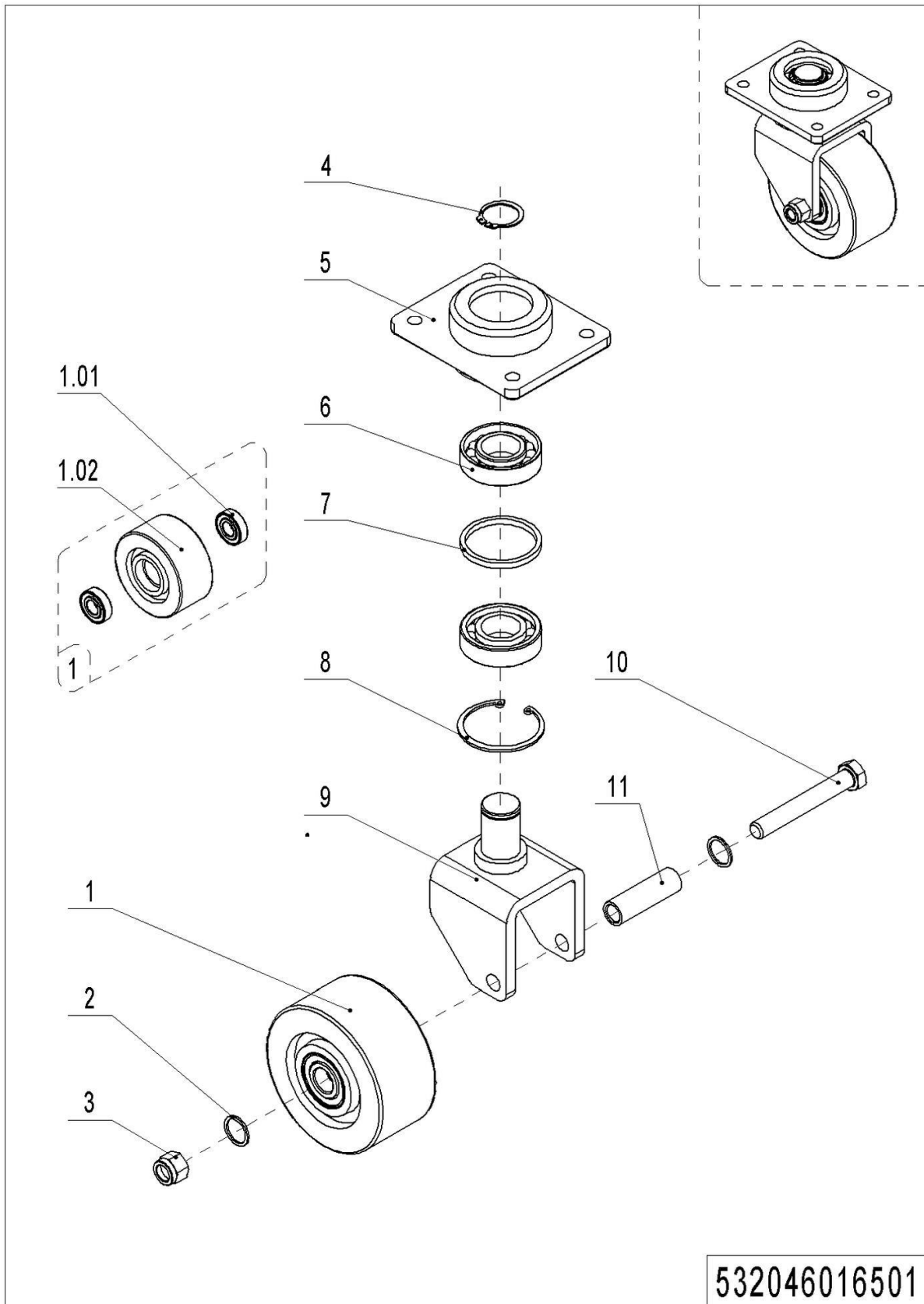
02 Control Handle (532046011002)

| No. | Item Code | Mark | Item Description | Qty. | Substitute | Note |
|-----|--------------|------|------------------|------|------------|--------|
| -- | 502311010005 | 2 | Control Handle | 1 | | |
| 1 | 502311020023 | 2 | Label | 1 | | |
| 2 | 502311020021 | 2 | Button | 1 | | |
| 3 | 502311020020 | 2 | Button | 1 | | |
| 4 | 502311020019 | 2 | Button | 1 | | |
| 5 | 502311020022 | 2 | Spring | 6 | | |
| 6 | 502311020024 | 2 | Handle Cap | 1 | | |
| 7 | 502311020018 | 2 | Spring | 4 | | |
| 8 | 502311020017 | 2 | Bracket | 1 | | |
| 9 | 502311020016 | 2 | Cap,Break Switch | 1 | | |
| 10 | 910201400001 | 1 | Screw | 8 | | |
| 11 | 502311020011 | 2 | Traction lever | 1 | | |
| 12 | 921700100001 | | Accelerator | 1 | | CURTIS |
| 12 | 921700100010 | | Accelerator | 1 | | DT |
| 13 | 910200600005 | 1 | Screw | 3 | | |
| 14 | 502311020014 | 2 | Bracket | 1 | | |
| 15 | 502311010007 | | Microswitch Kits | 1 | | |
| 16 | 502311020012 | 2 | Traction lever | 1 | | |
| 17 | 910400100002 | 1 | Flat Washer | 2 | | |
| 18 | 910400500002 | 1 | Spring Washer | 2 | | |
| 19 | 910200200003 | 1 | Screw | 2 | | |
| 20 | 502311020015 | 2 | Bracket | 1 | | |
| 21 | 502311010008 | | Microswitch Kits | 1 | | |
| 22 | 910201400002 | 1 | Screw | 6 | | |
| 23 | 502311010006 | 2 | Bracket | 1 | | |
| 24 | 502311020025 | 2 | Handle Cap | 1 | | |
| 25 | 910200200035 | 1 | Screw | 2 | | |
| 26 | 910200400015 | 1 | Screw | 4 | | |

03 Load Wheel (532046017001)

03 Load Wheel (532046017001)

| No. | Item Code | Mark | Item Description | Qty. | Substitute | Note |
|------|--------------|------|------------------|------|------------|------|
| 1 | 940600500014 | 2 | Washer | 4 | | |
| 2 | 532098510009 | | Wheel | 2 | | |
| 2.01 | 910700200019 | | Bearing | 4 | | |
| 2.02 | 940300300023 | | WheelΦ80x93 | 2 | | |
| 3 | 301017020001 | 2 | Axle | 2 | | |
| 4 | 910600400028 | 2 | Spring Pin | 2 | | |

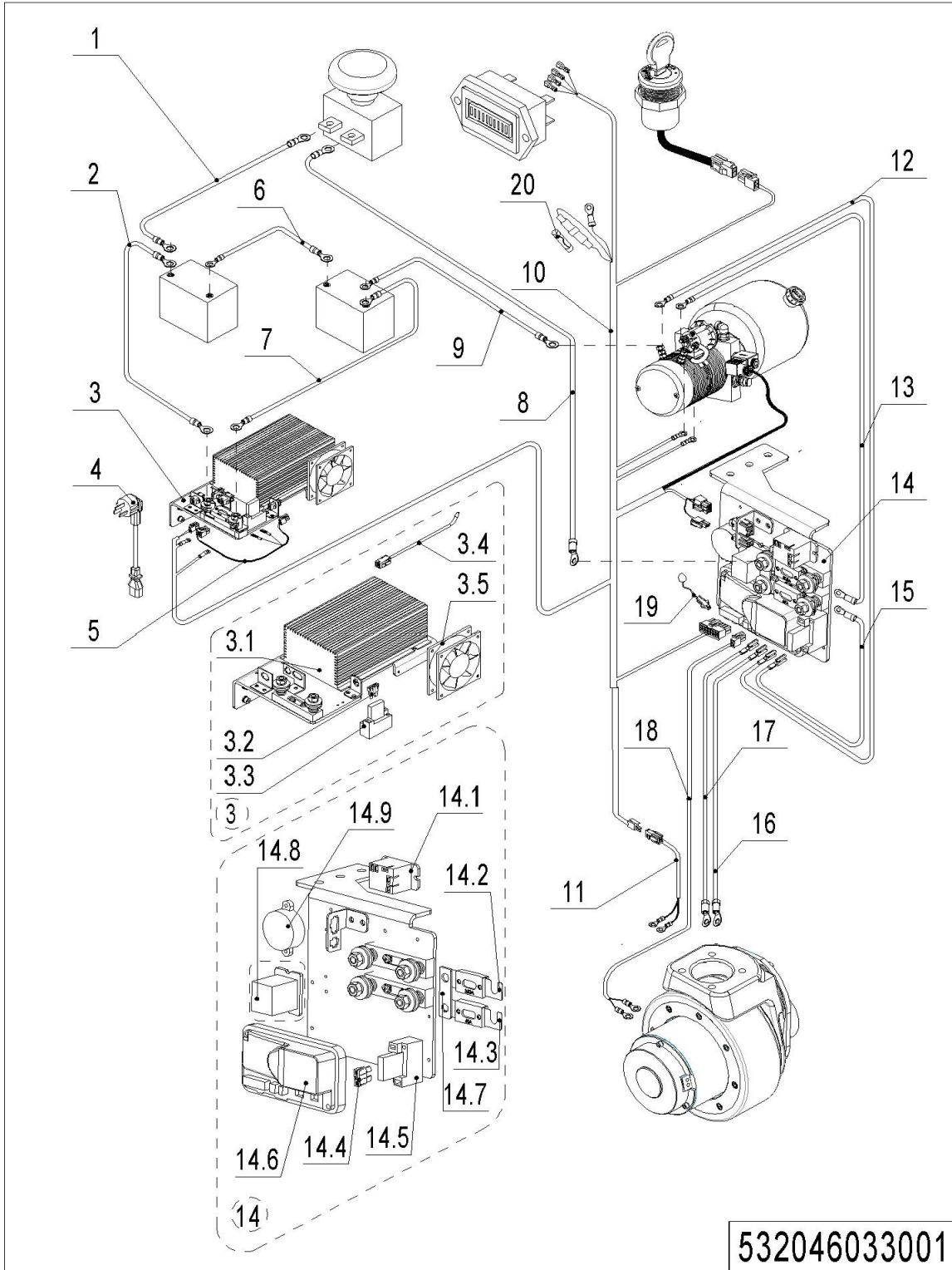
04 Caster (532046016501)

04 Caster (532046016501)

| No. | Item Code | Mark | Item Description | Qty. | Substitute | Note |
|------|--------------|------|------------------|------|------------|------|
| -- | 532616510000 | 2 | Caster Assembly | 1 | | |
| 1 | 532698510004 | | Wheel | 1 | | |
| 1.01 | 910700200019 | | Bearing | 2 | | |
| 1.02 | 940300300019 | | WheelΦ124x60 | 1 | | |
| 2 | 940600500014 | 2 | Washer | 2 | | |
| 3 | 910300500007 | 1 | Nut | 1 | | |
| 4 | 910401300016 | 1 | Circlip | 1 | | |
| 5 | 532616520002 | 2 | Bracket | 1 | | |
| 6 | 910700400004 | 1 | Bearing | 2 | | |
| 7 | 532616520001 | 2 | Check Ring | 1 | | |
| 8 | 910401400018 | 1 | Circlip | 1 | | |
| 9 | 532616510001 | 2 | Wheel Carrier | 1 | | |
| 10 | 910100100069 | 1 | Bolt | 1 | | |
| 11 | 532616520003 | 2 | Bushing | 1 | | |

Chapter 5: Electrical Parts

01 Wire Harness (532046033001)



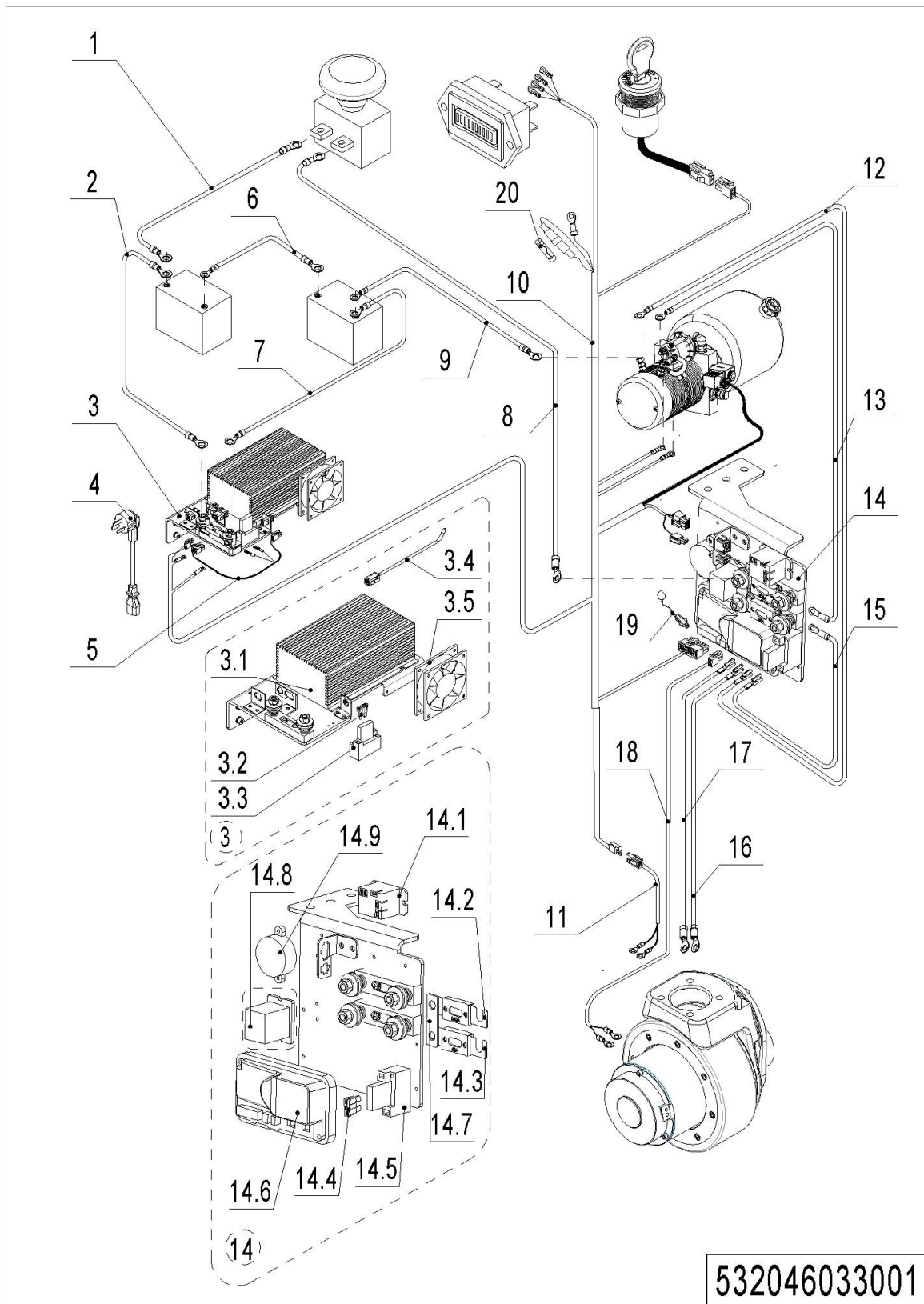
532046033001

1= Supply as package. 2= Supply with constraints. 3= Phasing-out supply. 4= Supply as assembly. 5= Check other tables.

01 Wire Harness (532046033001)

| No. | Item Code | Mark | Item Description | Qty. | Substitute | Note |
|------|--------------|------|----------------------|------|------------|--------|
| 1 | 532033010014 | 2 | Cable | 1 | | |
| 2 | 532033010021 | 2 | Cables | 1 | | |
| 3 | 532036510000 | 2 | charger24V10A(Asia) | 1 | | QQE |
| 3 | 532036510001 | 2 | charger24V10A(ENG) | 1 | | QQE |
| 3 | 532036510002 | 2 | charger24V10A(US) | 1 | | QQE |
| 3 | 532036510003 | 2 | charger24V10A(EU) | 1 | | QQE |
| 3 | 532036510004 | 2 | charger24V10A(AUS) | 1 | | QQE |
| 3 | 532036510005 | 2 | charger24V10A(ITA) | 1 | | QQE |
| 3 | 532036510006 | 2 | charger24V10A(SWE) | 1 | | QQE |
| 3 | 532036510007 | 2 | charger24V/10A(Asia) | 1 | | Shinny |
| 3 | 532036510008 | 2 | charger24V/10A(ENG) | 1 | | Shinny |
| 3 | 532036510009 | 2 | charger24V/10A(US) | 1 | | Shinny |
| 3 | 532036510010 | 2 | charger24V/10A(EU) | 1 | | Shinny |
| 3 | 532036510011 | 2 | charger24V/10A(AUS) | 1 | | Shinny |
| 3 | 532036510012 | 2 | charger24V/10A(ITA) | 1 | | Shinny |
| 3 | 532036510013 | 2 | charger24V/10A(SWE) | 1 | | Shinny |
| 3 | 532036510016 | 2 | charger24V/10A(ARG) | 1 | | QQE |
| 3 | 532036510015 | 2 | charger24V/10A(ISR) | 1 | | QQE |
| 3 | 532036510014 | 2 | charger24V/10A(ISR) | 1 | | Shinny |
| 3.01 | 921000100003 | 2 | Charger24V10A | 1 | | QQE |
| 3.01 | 921000100043 | 2 | Charger24V10A | 1 | | Shinny |
| 3.02 | 920100200001 | | Fuse | 1 | | |
| 3.03 | 920100400006 | 2 | Fuse Holder | 1 | | |
| 3.04 | 922000100025 | 2 | Lamp | 1 | | |
| 3.05 | 502336510008 | 2 | Fan | 1 | | |
| 4 | 921500200008 | 2 | Spring Cable (Asia) | 1 | | |
| 4 | 921500200004 | 2 | Spring Cable(ENG) | 1 | | |
| 4 | 921500200002 | 2 | Spring Cable(USA) | 1 | | |
| 4 | 921500200005 | 2 | Spring Cable(EU) | 1 | | |
| 4 | 921500200003 | 2 | Spring Cable(AUS) | 1 | | |

01 Wire Harness (532046033001) Continuation1

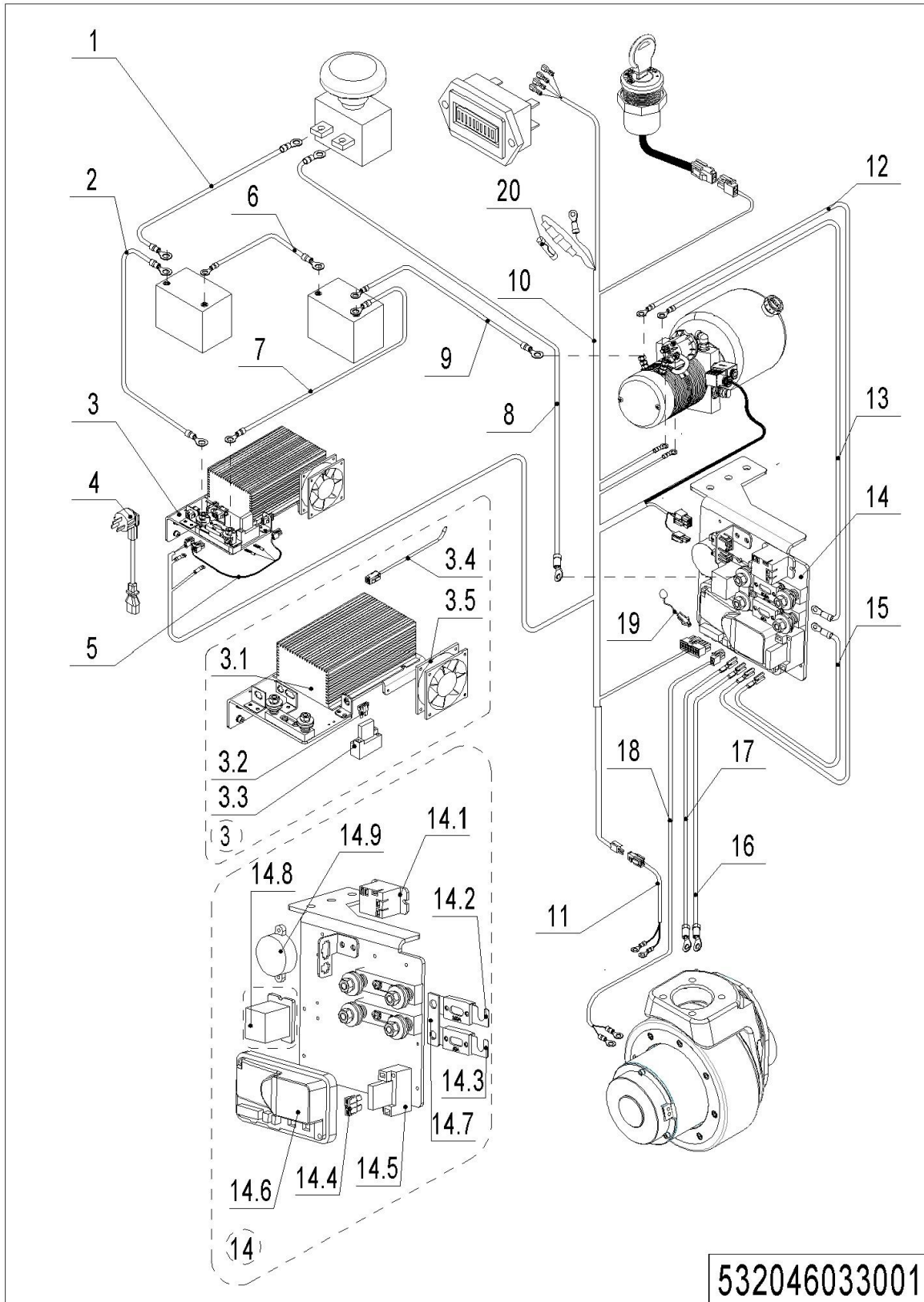


1= Supply as package. 2= Supply with constraints. 3= Phasing-out supply. 4= Supply as assembly. 5= Check other tables.

01 Wire Harness (532046033001) Continuation 1

| No. | Item Code | Mark | Item Description | Qty. | Substitute | Note |
|-------|--------------|------|-----------------------|------|------------|-------------|
| 4 | 921500200006 | 2 | Spring Cable(ITY) | 1 | | |
| 4 | 921500200007 | 2 | Spring Cable(SWD) | 1 | | |
| 5 | 532033010003 | 2 | Wire Harness | 1 | | |
| 6 | 532033010013 | 2 | Cable | 1 | | |
| 7 | 532033010022 | 2 | Cables | 1 | | |
| 8 | 532033010015 | 2 | Cable | 1 | | |
| 9 | 532033010019 | 2 | Cable | 1 | | |
| 10 | 532033010026 | 2 | Wire Harness | 1 | | AMER,ZD |
| 10 | 532033010005 | 2 | Wire Harness | 1 | | BT |
| 11 | 532033010001 | 2 | Wire Harness | 1 | | Only for BT |
| 12 | 532033010020 | 2 | Cables | 1 | | |
| 13 | 532033010017 | 2 | Cable | 1 | | |
| 14 | 532033010035 | 2 | Electronic Components | 1 | | AMER,ZD |
| 14 | 532033010009 | 2 | Electronic Components | 1 | | BT |
| 14.01 | 920800100003 | 2 | Relay | 1 | | |
| 14.02 | 920100100007 | | Fuse | 1 | | |
| 14.03 | 920100100003 | | Fuse | 1 | | |
| 14.04 | 920100200002 | | Fuse | 1 | | |
| 14.05 | 920100400006 | 2 | Fuse Holder | 1 | | |
| 14.06 | 921400100001 | 2 | Controller | 1 | | 1212P-2501 |
| 14.07 | 505633020003 | 2 | Copper Busbar | 1 | | |
| 14.08 | 532033010023 | 2 | Module | 1 | | Only for BT |
| 14.09 | 502333010025 | 2 | buzzer | 1 | | |
| 15 | 532033010016 | 2 | Cables | 1 | | |
| 16 | 532033010028 | 2 | Cables | 1 | | AMER,ZD |
| 16 | 532033010012 | 2 | Cables | 1 | | BT |
| 17 | 532033010027 | 2 | Cables | 1 | | AMER,ZD |
| 17 | 532033010011 | 2 | Cables | 1 | | BT |
| 18 | 532033010002 | 2 | Wire Harness | 1 | | AMER |

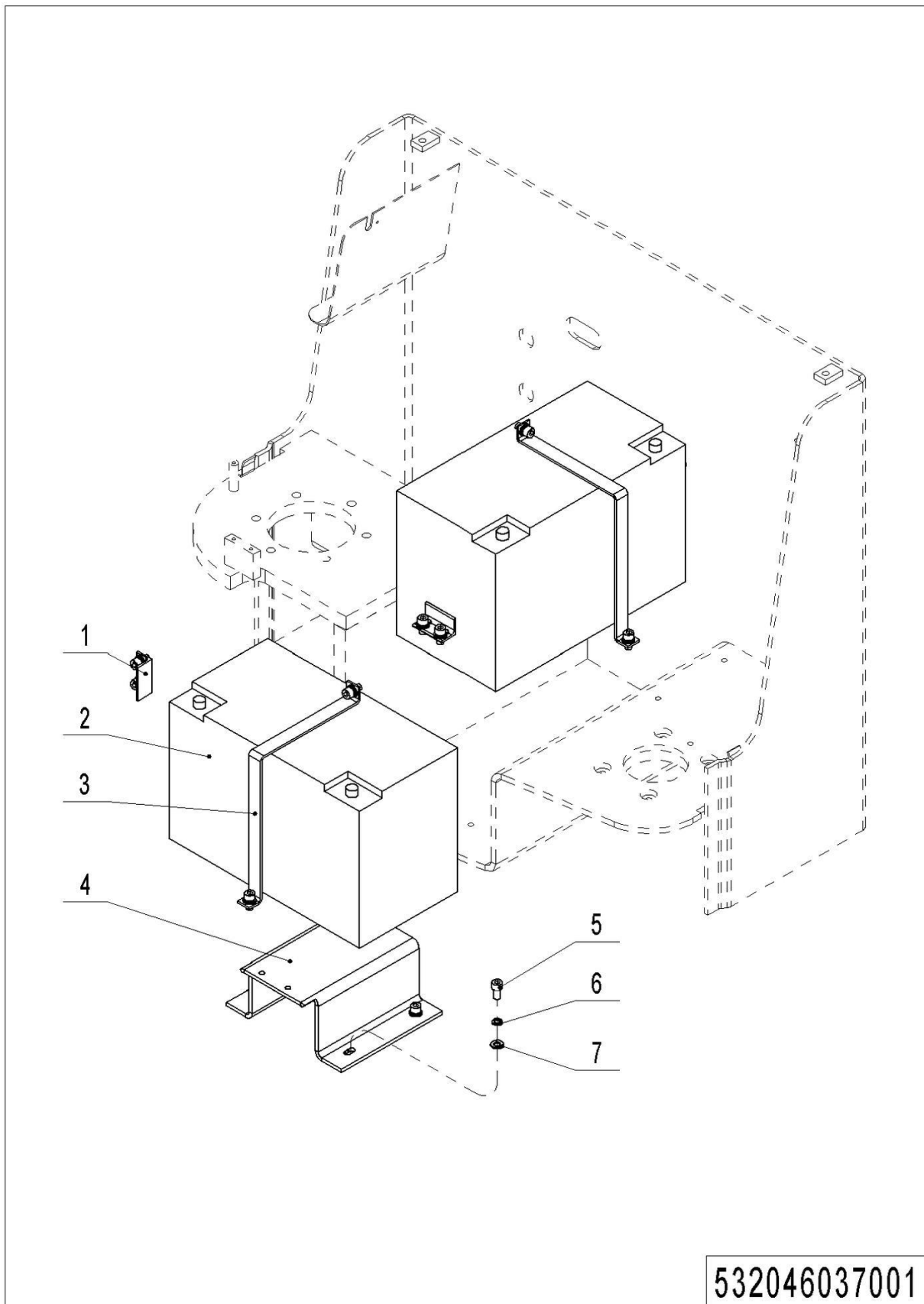
01 Wire Harness (532046033001) Continuation 2



1= Supply as package. 2= Supply with constraints. 3= Phasing-out supply. 4= Supply as assembly. 5= Check other tables.

01 Wire Harness (532046033001) Continuation 2

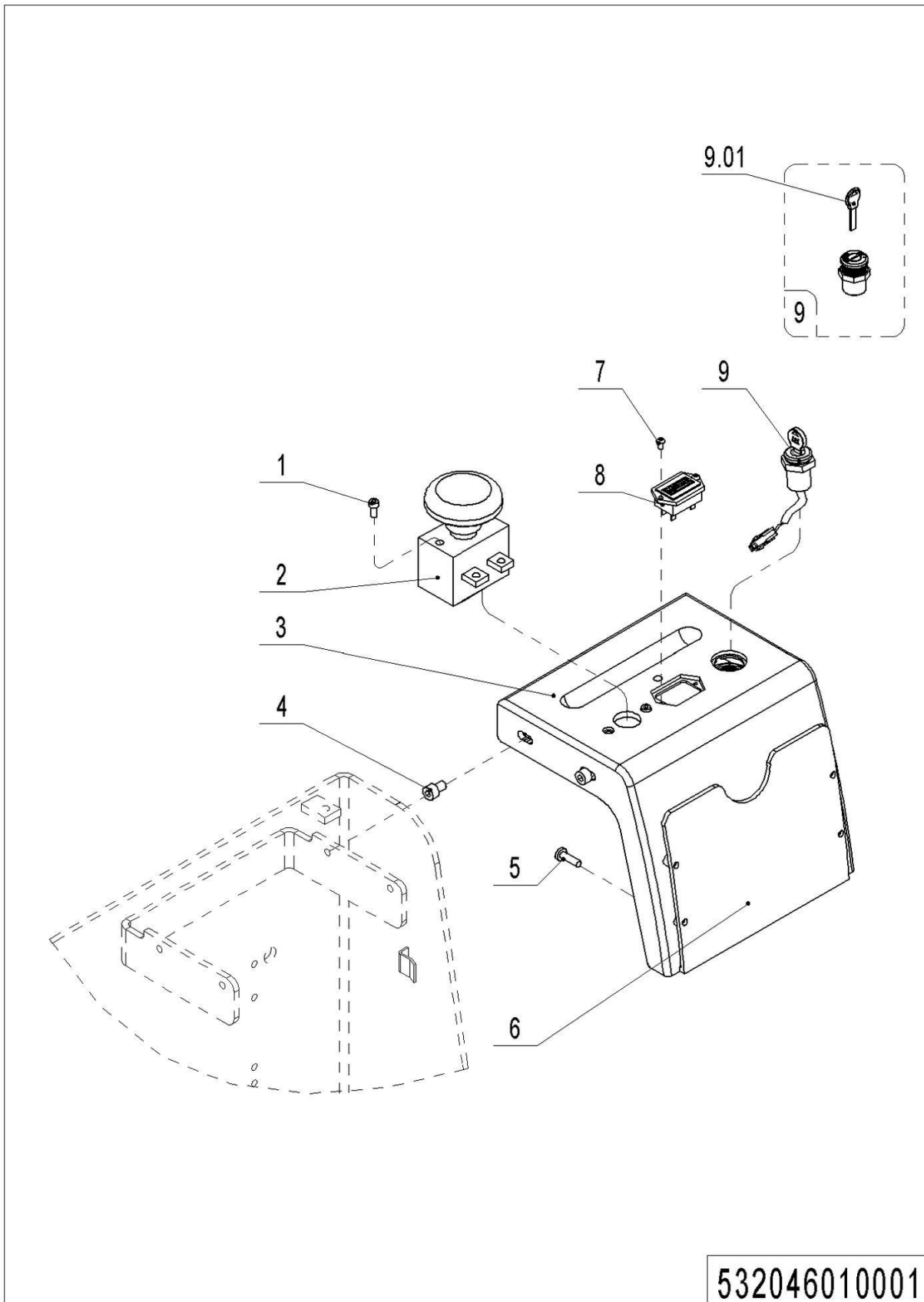
| No. | Item Code | Mark | Item Description | Qty. | Substitute | Note |
|-----|--------------|------|------------------------|------|------------|------|
| 18 | 532033010025 | 2 | Wire Harness | 1 | | BT |
| 18 | 532033010032 | 2 | Wire Harness | 1 | | ZD |
| 19 | 502333010017 | 2 | Fault Display Assembly | 1 | | |
| 20 | 920100300001 | | Fuse | 1 | | 0.5A |

02 Traction Battery (532046037001)

1= Supply as package. 2= Supply with constraints. 3= Phasing-out supply. 4= Supply as assembly. 5= Check other tables.

02 Traction Battery (532046037001)

| No. | Item Code | Mark | Item Description | Qty. | Substitute | Note |
|-----|--------------|------|------------------|------|------------|----------------|
| 1 | 532021520056 | 2 | Fixing Mount | 2 | | |
| 2 | 920600100001 | 2 | Battery12V85Ah | 2 | | |
| 2 | 920600100002 | 2 | Battery12V106Ah | 2 | | |
| 3 | 532021520055 | 2 | Fixing Mount | 2 | | |
| 4 | 532021520051 | 2 | Fixing Base | 1 | | Only for 106Ah |
| 5 | 910200200055 | 1 | Screw | 12 | | |
| 6 | 910400500006 | 1 | Spring Washer | 12 | | |
| 7 | 910400100006 | 1 | Flat Washer | 12 | | |

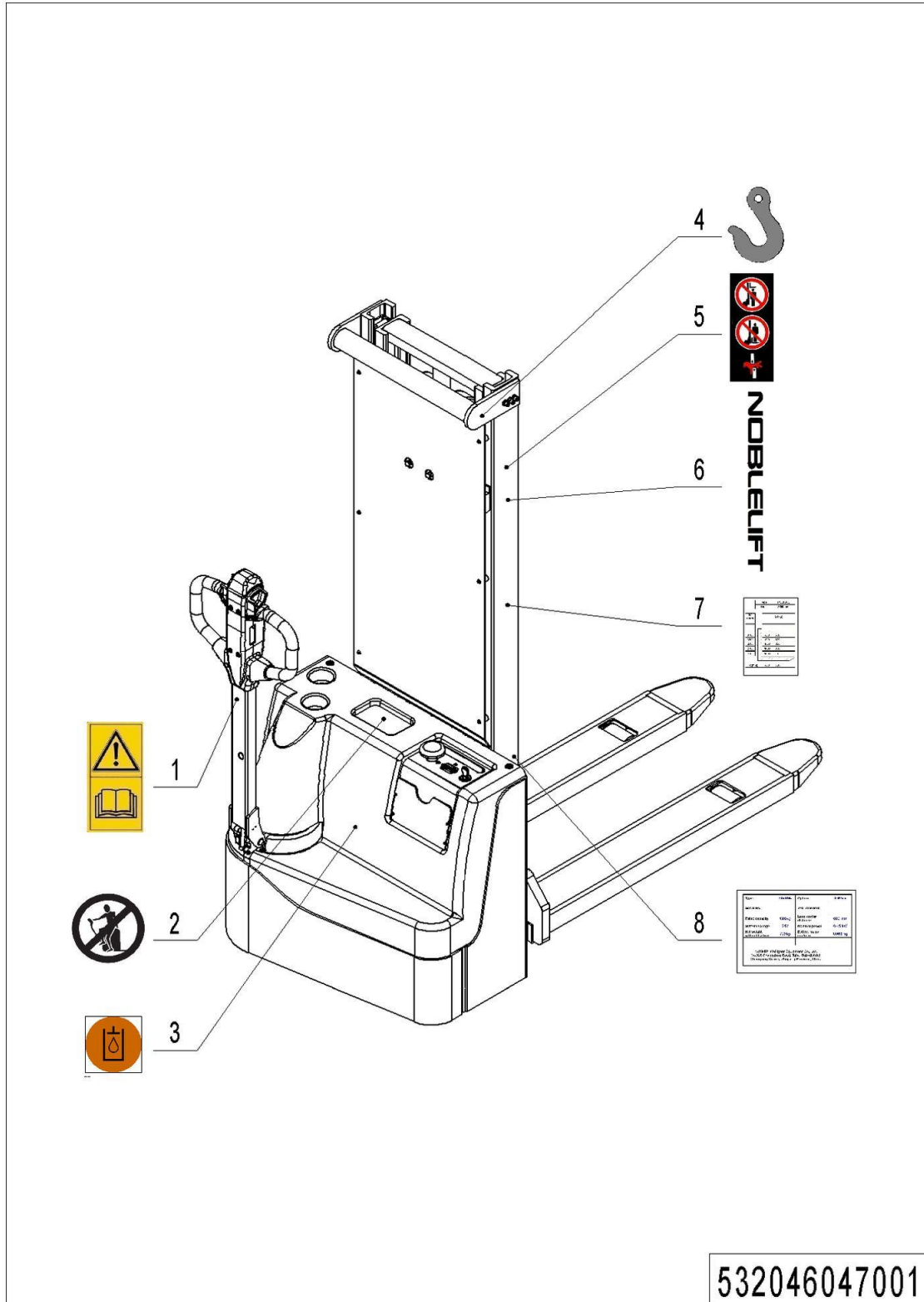
03 Display Assembly (532046010001)

03 Display Assembly (532046010001)

| No. | Item Code | Mark | Item Description | Qty. | Substitute | Note |
|------|--------------|------|-------------------|------|------------|------|
| 1 | 910200500038 | 1 | Screw | 2 | | |
| 2 | 920200100004 | 2 | Emergency Button | 1 | | |
| 3 | 532010020000 | 2 | Panel | 1 | | |
| 4 | 910200200053 | 1 | Screw | 4 | | |
| 5 | 910200400006 | 1 | Screw | 4 | | |
| 6 | 532010020001 | 2 | File Box | 1 | | |
| 7 | 910200300003 | 1 | Screw | 2 | | |
| 8 | 921100100036 | 2 | Battery Indicator | 1 | | |
| 8 | 921100100061 | 2 | Battery Indicator | 1 | | |
| 9 | 506534010000 | 2 | Wire Harness | 1 | | |
| 9.01 | 505698520031 | 2 | Key | 1 | | |

Chapter 6: Others

01 Label and Decal (532046047001)

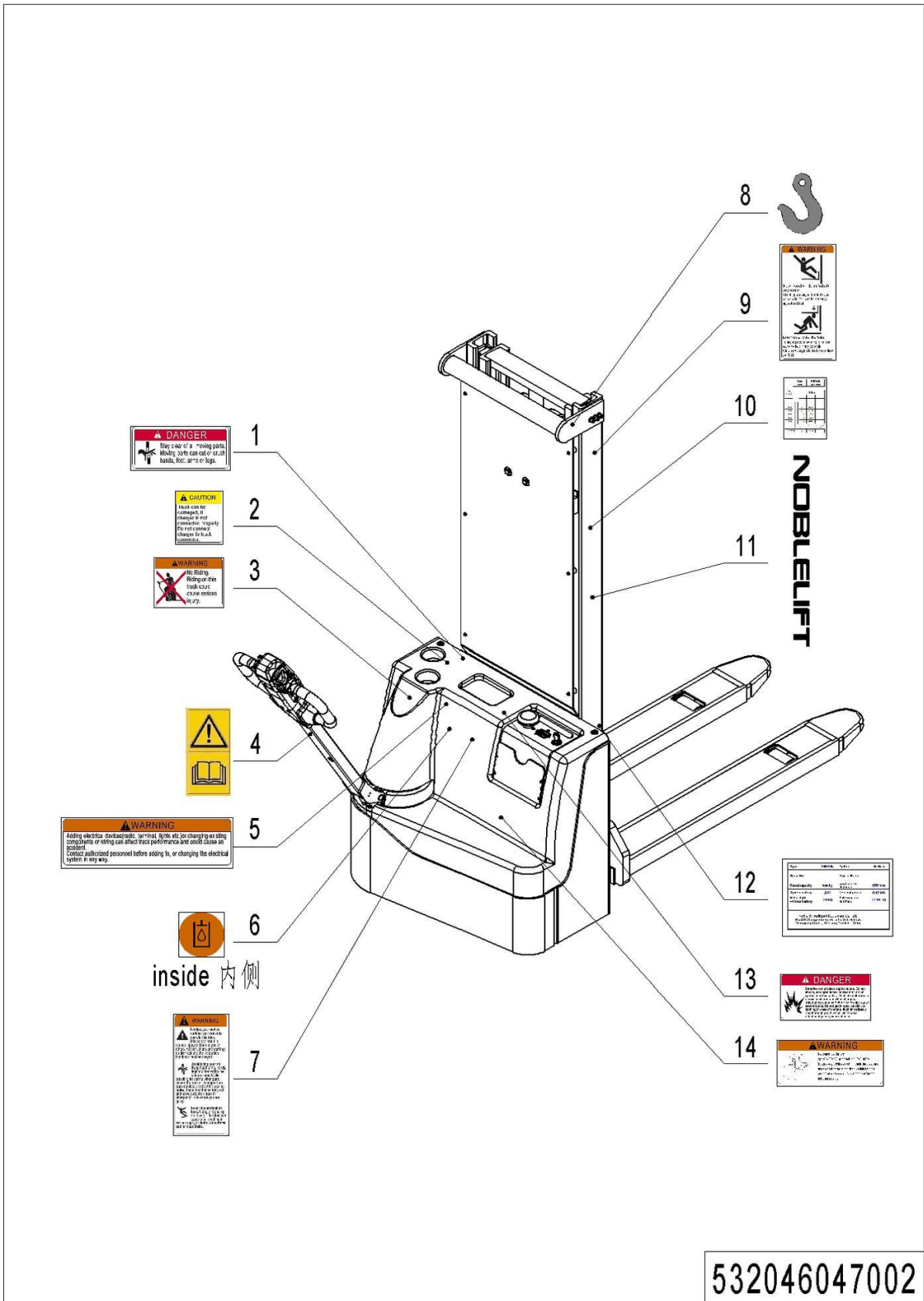


1= Supply as package. 2= Supply with constraints. 3= Phasing-out supply. 4= Supply as assembly. 5= Check other tables.

01 Label and Decal (532046047001)

| No. | Item Code | Mark | Item Description | Qty. | Substitute | Note |
|-----|--------------|------|-----------------------|------|------------|------|
| 1 | 941200300002 | 2 | Label | 1 | | |
| 2 | 941200100003 | 2 | Label | 1 | | |
| 3 | 941200300003 | 2 | Label | 1 | | |
| 4 | 941200300001 | 2 | Label | 2 | | |
| 5 | 941200100004 | 2 | Label | 2 | | |
| 6 | 941200500001 | 2 | Label | 2 | | |
| 7 | 532047520010 | 2 | Load Capacity Diagram | 1 | | |
| 8 | 532047520012 | 2 | Truck data plate | 1 | | |

02 Label and Decal (USA) (532046047002)



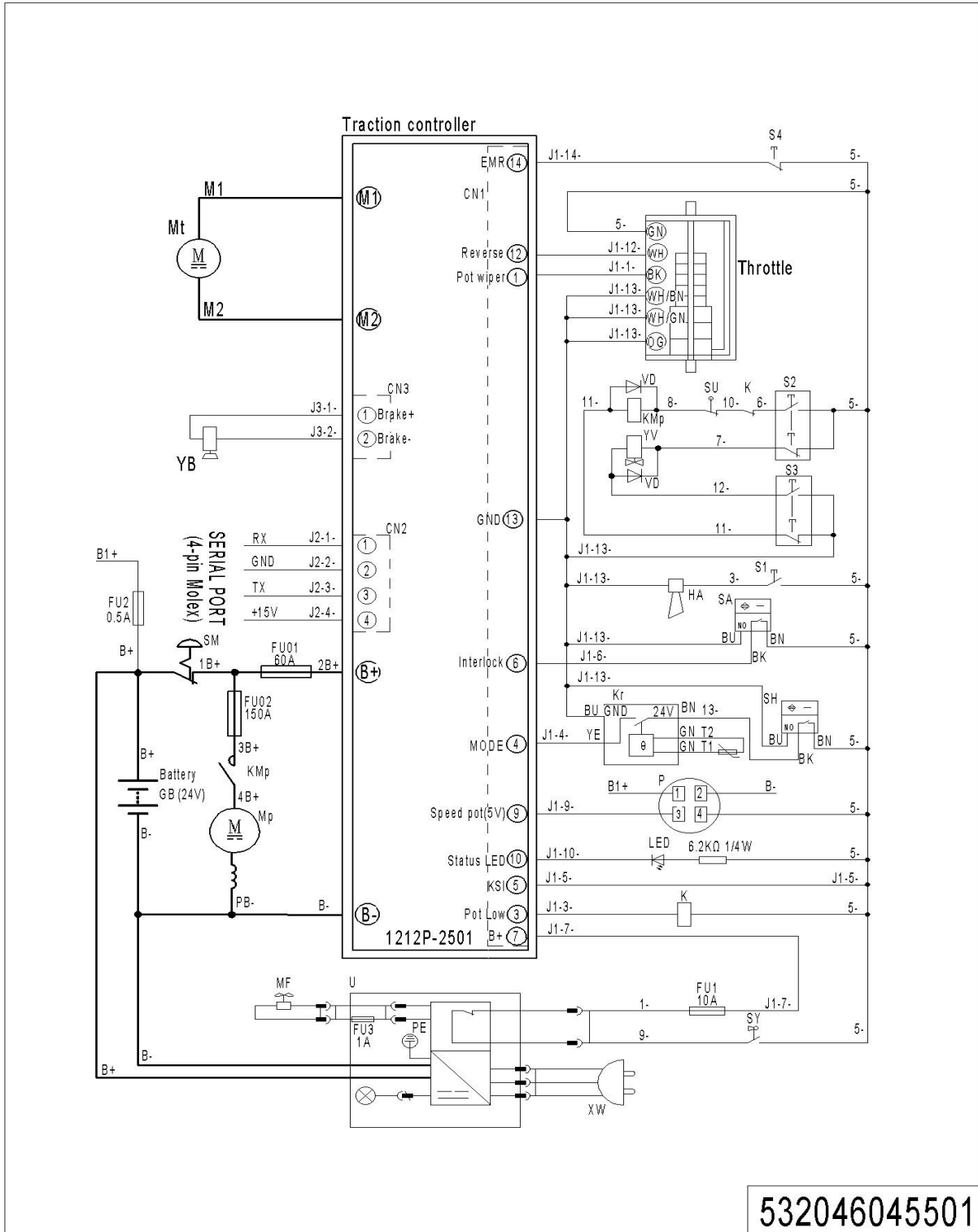
1= Supply as package. 2= Supply with constraints. 3= Phasing-out supply. 4= Supply as assembly. 5= Check other tables.

02 Label and Decal (USA) (532046047002)

| No. | Item Code | Mark | Item Description | Qty. | Substitute | Note |
|-----|--------------|------|-----------------------|------|------------|------|
| 1 | 941200100014 | 2 | Label | 1 | | |
| 2 | 941200100012 | 2 | Label | 1 | | |
| 3 | 941200100011 | 2 | Label | 1 | | |
| 4 | 941200300002 | 2 | Label | 1 | | |
| 5 | 941200100010 | 2 | Label | 1 | | |
| 6 | 941200300003 | 2 | Label | 1 | | |
| 7 | 941200100009 | 2 | Label | 1 | | |
| 8 | 941200300001 | 2 | Label | 2 | | |
| 9 | 941200100016 | 2 | Label | 1 | | |
| 10 | 532047520010 | 2 | Load Capacity Diagram | 1 | | |
| 11 | 941200500001 | 2 | Label | 2 | | |
| 12 | 532047520012 | 2 | Truck data plate | 1 | | |
| 13 | 941200100013 | 2 | Label | 1 | | |
| 14 | 941200100017 | 2 | Label | 1 | | |

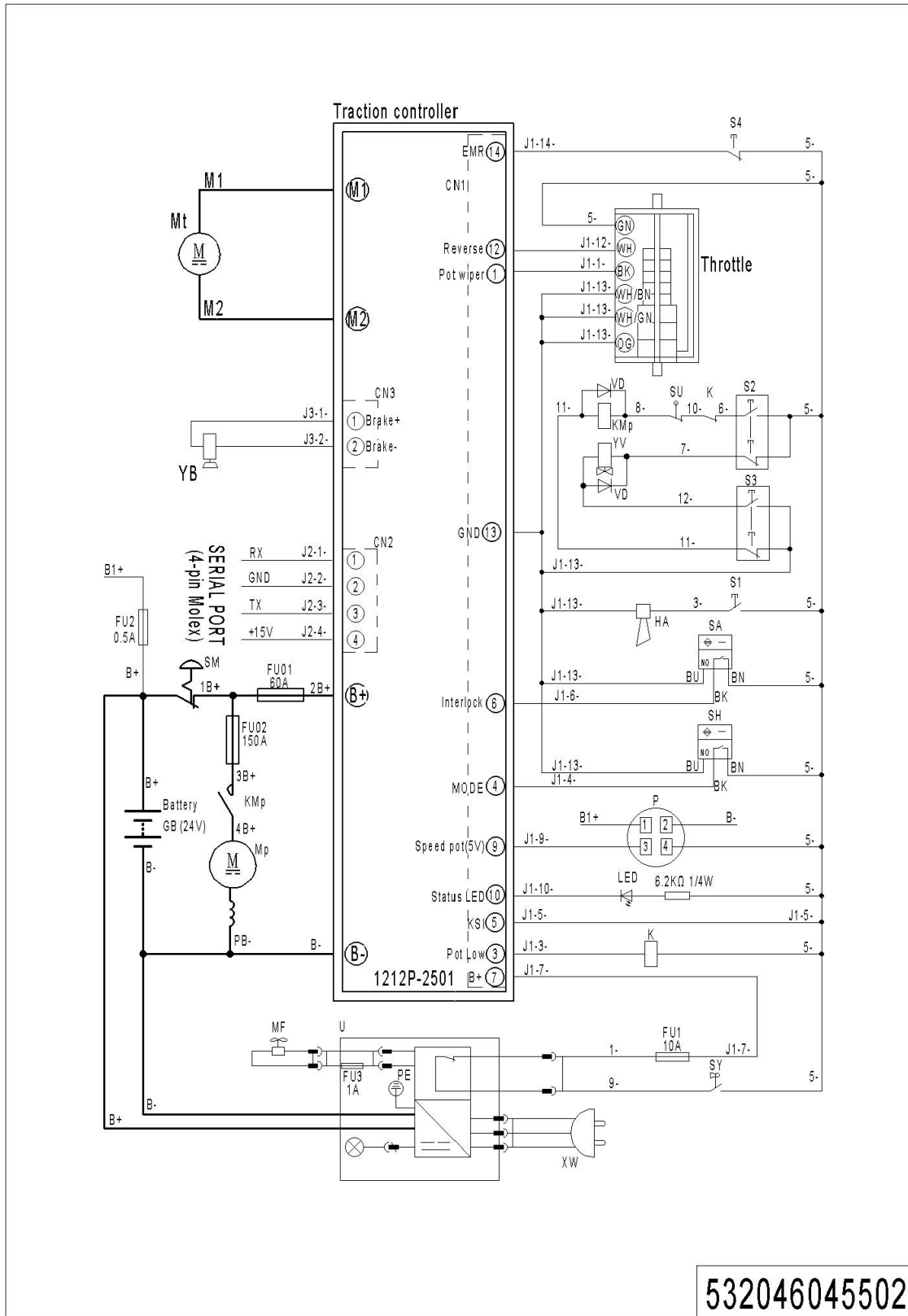
Appendix

01 Electrical Circuit Diagram (BT)



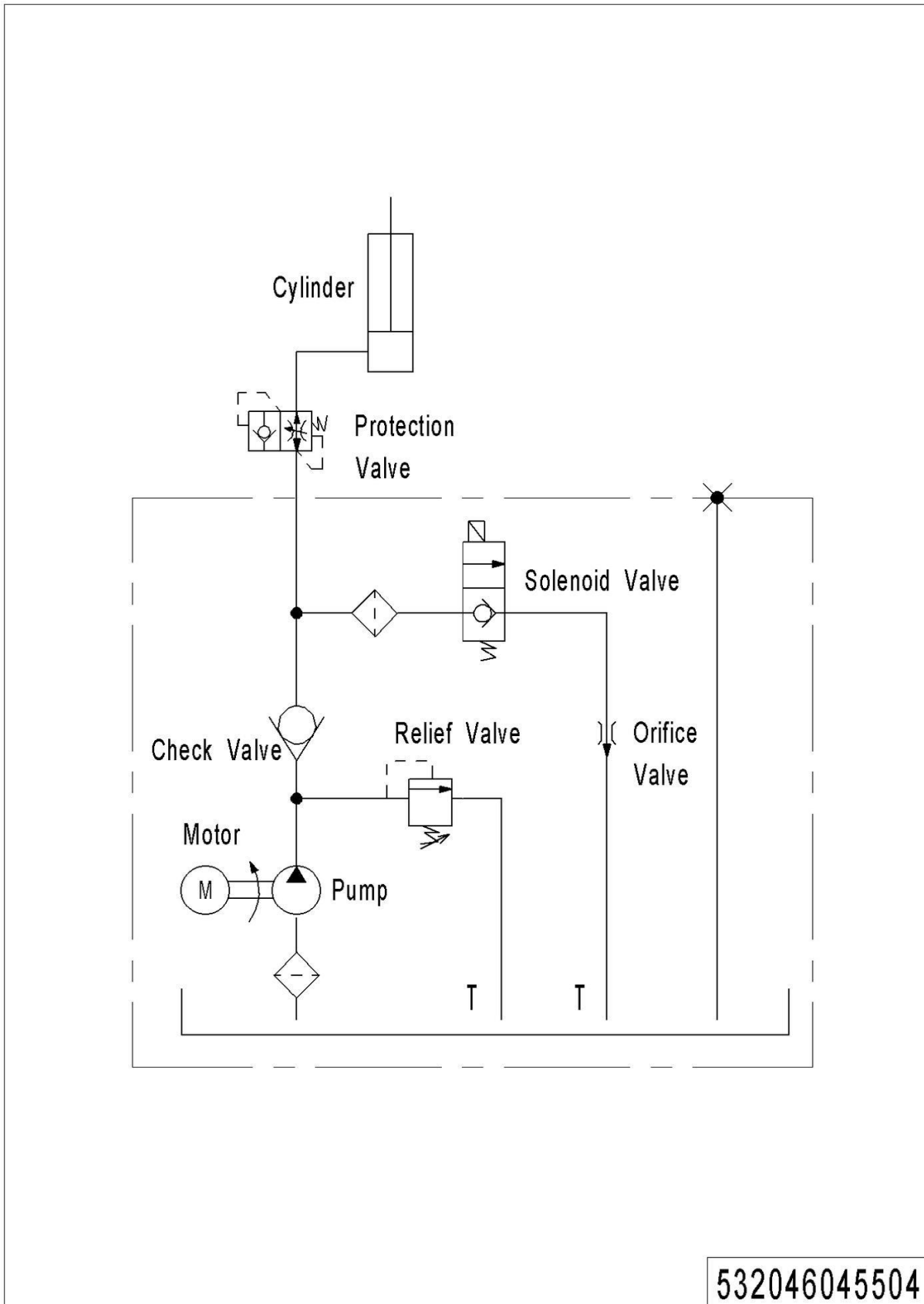
1= Supply as package. 2= Supply with constraints. 3= Phasing-out supply. 4= Supply as assembly. 5= Check other tables.

02 Electrical Circuit Diagram (AMER,ZD)



1= Supply as package. 2= Supply with constraints. 3= Phasing-out supply. 4= Supply as assembly. 5= Check other tables.

03 Hydraulic Circuit Diagram



04 Consumable Parts List

| No. | Item Code | Item Description | Qty. | Chapter/ Section/ Number |
|-----|--------------|------------------------|------|----------------------------------|
| 1 | 940300300023 | WheelΦ80x93 | 2 | Chapter 4/03/2.02 |
| 2 | 910700200019 | Bearing | 8 | Chapter 2/01/4 Chapter 4/03/2.01 |
| 2 | 910700200019 | Bearing | | Chapter 4/04/1.01 |
| 3 | 940400100052 | Air Spring | 1 | Chapter 4/01/4 |
| 4 | 532098510010 | Seal Kit | 1 | Chapter 2/01/15 |
| 5 | 920100100007 | Fuse | 1 | Chapter 5/01/14.02 |
| 6 | 920100100003 | Fuse | 1 | Chapter 5/01/14.03 |
| 7 | 920100200002 | Fuse | 1 | Chapter 5/01/14.04 |
| 8 | 920100300001 | Fuse | 1 | Chapter 5/01/20 |
| 9 | 502333010017 | Fault Display Assembly | 1 | Chapter 5/01/19 |
| 10 | 920800100003 | Relay | 1 | Chapter 5/01/14.01 |
| 11 | 502311010007 | Microswitch Kits | 1 | Chapter 4/02/15 |
| 12 | 502311010008 | Microswitch Kits | 1 | Chapter 4/02/21 |
| 13 | 532011010004 | Proximity Switch | 2 | Chapter 3/03/21 Chapter 4/01/11 |
| 14 | 532021510032 | Proximity Switch | 1 | Chapter 3/02/23 |
| 15 | 920200100004 | Emergency Button | 1 | Chapter 5/03/2 |
| 16 | 921700100010 | Accelerator | 1 | Chapter 4/02/12 |
| 16 | 921700100001 | Accelerator | 1 | Chapter 4/02/12 |
| 17 | 920200300001 | Microswitch | 1 | Chapter 3/02/27 Chapter 3/03/17 |
| 18 | 506534010000 | Wire Harness | 1 | Chapter 5/03/9 |