

Print Number:

Print Date:

NOBLELIFT

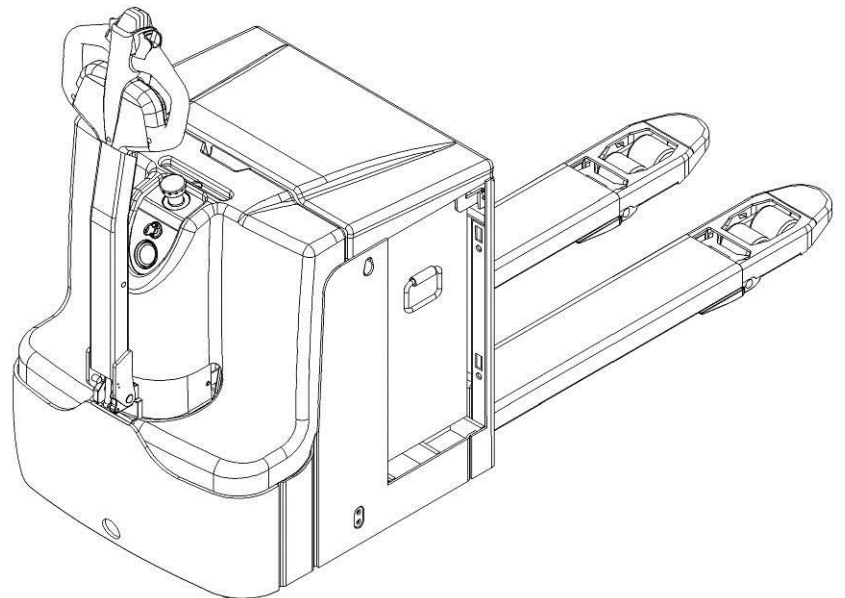


Scan QR Code for More

Electric Pallet Truck PT25L

PARTS MANUAL

505046010101



Version: V04

Truck Identification Number From:

Parts Manual

PT25L-PM04EN

Please order spare parts from authorized dealers of Noblelift Intelligent Equipment Co., LTD.

In order to avoid wrong delivery, all the orders for spare parts should specify the following items:

- Truck model, identification number and manufacture year.
- Orders for spare parts of mast, hydraulic transmission unit, steering axle, motor, etc. shall indicate the manufacture number of these parts.
- Codes for Noblelift spare parts are shown in the table of parts manual. Please also pay attention to the description of supply status, order quantity, etc. (check the number listed in "Mark" column of the parts manual).

"Mark" Column:

The unmarked indicates the parts are in short supply cycle.

Number 1: supply as package. Indicating these that parts are small parts and seal parts, which are supplied in package unit and in short supply cycle.

Number 2: supply with constraints. Indicating that these spare parts are not in stock and will be prepared for production after receiving the order from customers, which are in long supply cycle.

Number 3: phasing-out supply. Indicating that these parts will be replaced by new parts due to technical improvements and the current stock will not be available when these parts run out. Please check the description of technical improvements notice.

Number 4: supply as assembly. Indicating that these parts are assembly parts defined by manufacture process, which cannot be supplied as a single part.

Number 5: check other tables.

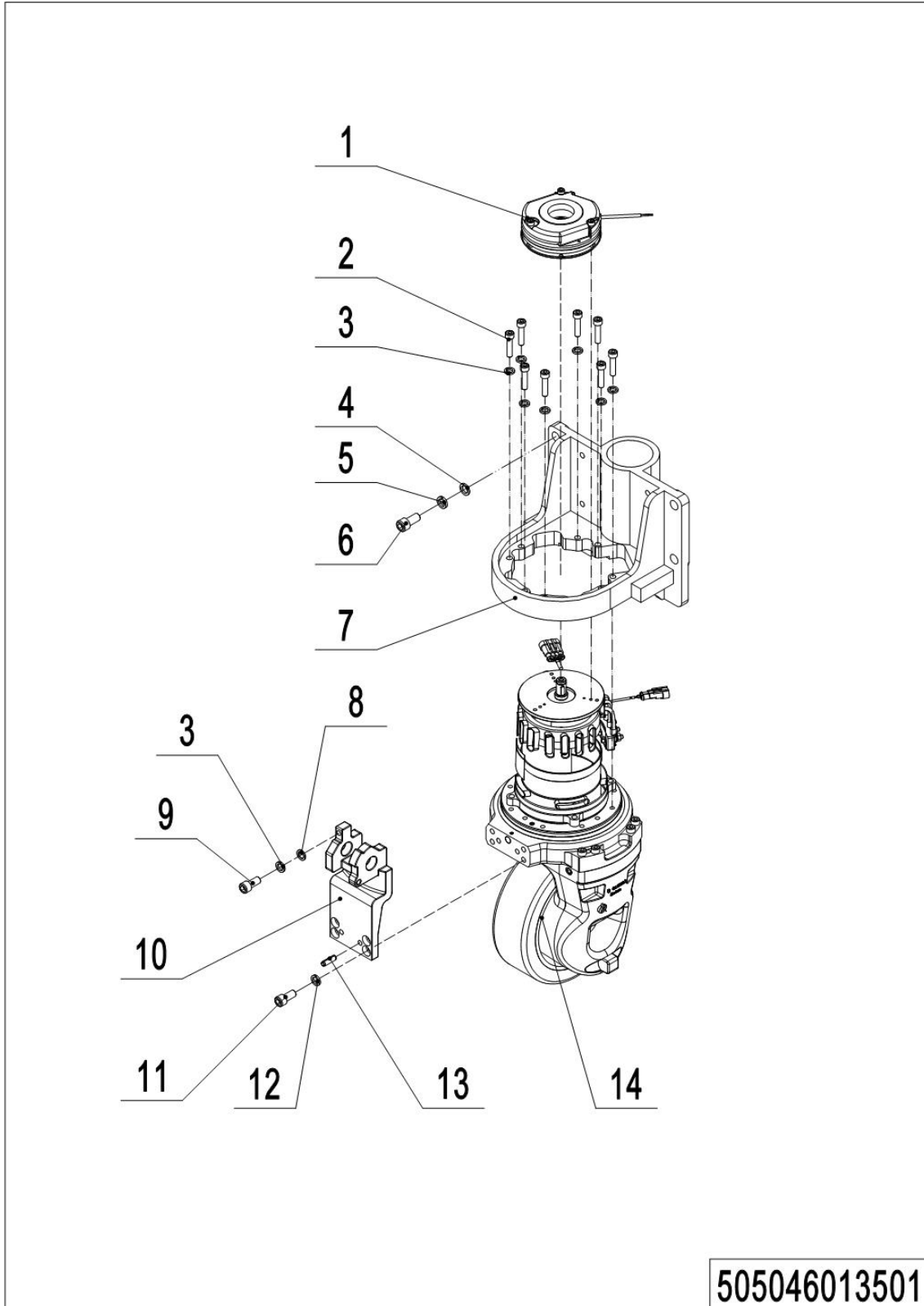
This parts manual is the property of Noblelift and can be shared under the confidential agreement only, Noblelift has the right to claim for compensation of any unauthorized use. Copy without permission is not allowed. Figures in the manual are not limited by the original design. Noblelift Intelligent Equipment Co., LTD reserves the right to improve the products for continuous technology progress.

Table of Contents

Chapter 1: Drive System.....	4
01 Drive Unit (505046013501).....	4
02 Drive Assembly 1.7kW (535046013502)	6
Chapter 2: Hydraulic System.....	8
01 Hydraulic System (505046024001)	8
02 Hydraulic Power Unit (505046024002).....	10
Chapter 3: Truck Frame	12
01 Truck Body (504446021501).....	12
02 Chassis(EU) (505046038501).....	14
02 Chassis(EU) (504746038501) (505046038501) Continuation1	16
03 Chassis(US)(505046038502).....	18
03 Chassis(US) (505046038501) Continuation1	20
Chapter 4: Steering System, Braking System, Wheels	22
01 Tiller (504446011001)	22
02 Tiller (535946011002)	24
03 Tiller (566546010002)	26
04 Load Wheel (Tandem) (505646017001).....	28
05 Load Wheel (Single) (505646017002).....	30
06 Caster (505046016501).....	32
Chapter 5: Electrical Parts	34
01 Display Assembly (504746010001).....	34
02 Wire Harness (505046033001)	36
03 Controller (505046033002)	38
04 Wire Harness (504446033003)	40
05 Controller (505046033004).....	42
06 Charger (505046036501).....	45
07 Charger (505046036502).....	47
08 Battery (505046037001).....	49
09 Battery (505046037002).....	51
Chapter 6: Others	53
01 Labels and Decals (EU) (505046047001).....	53
02 Labels and Decals (US) (505046047002).....	55
Appendix.....	57
01 Electrical Circuit Diagram (504446045501).....	57
02 Electrical Circuit Diagram (505033003006)	58
03 Hydraulic Circuit Diagram (505046045501).....	59
04 Consumable Parts List	60

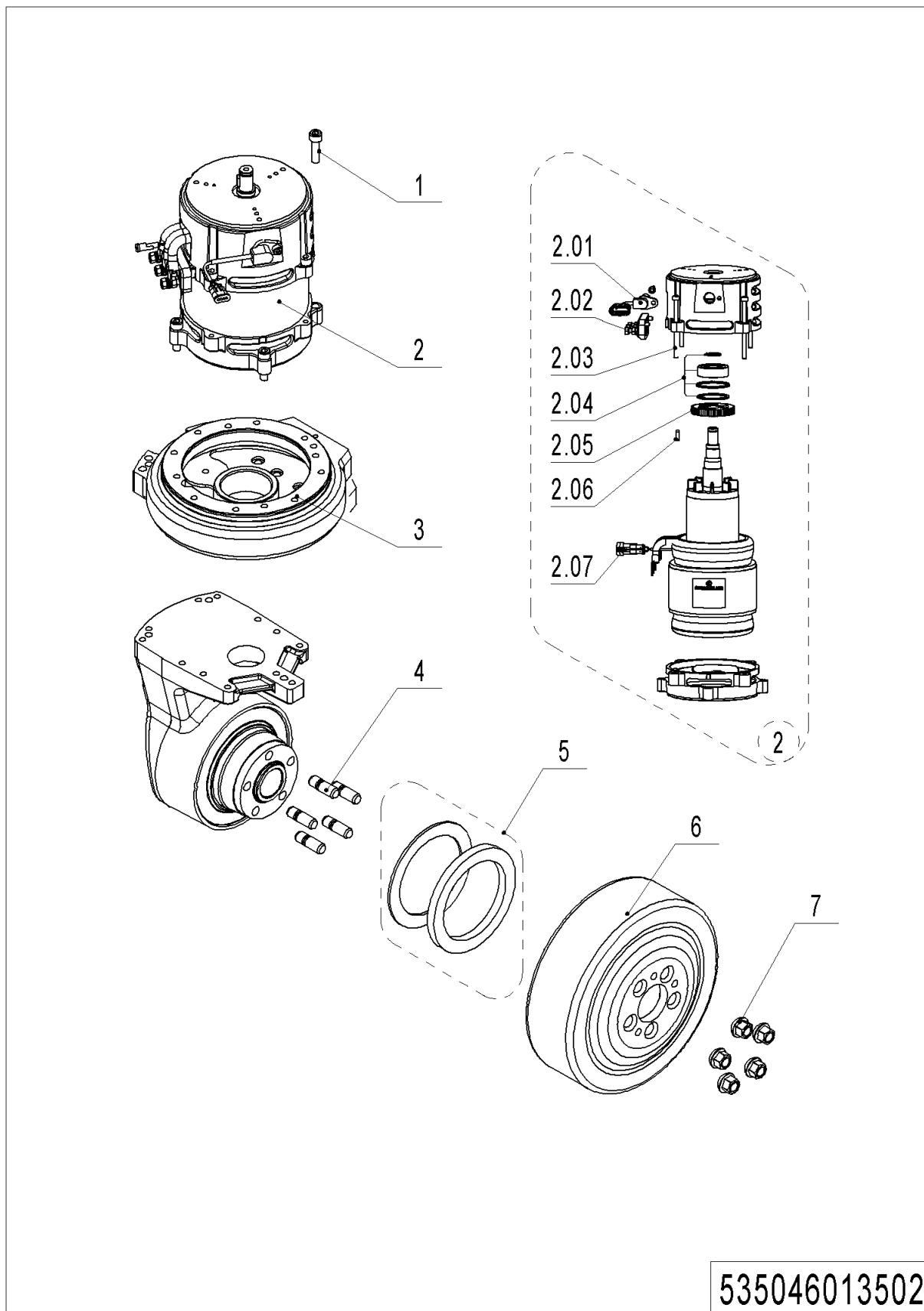
Chapter 1: Drive System

01 Drive Unit (505046013501)



01 Drive Unit (505046013501)

No.	Item Code	Mark	Item Description	Qty.	Substitute	Note
1	940700100001	2	Brake	1		
2	910200200060	1	Screw	8		
3	910400500006	1	Spring Washer	9		
4	910400100010	1	Flat Washer	4		
5	910400500010	1	Spring Washer	4		
6	910100300071	1	Bolt	4		
7	505013520001	2	Wheel Mount	1		
8	910400300005	1	Flat Washer	1		
9	910200200058	1	Screw	1		
10	534713520001	2	Bracket	1		
11	910200200075	1	Screw	4		
12	910400500007	1	Spring Washer	4		
13	910600100010	1	Cylindrical Pin	2		
14	940900400003	5	Drive Unit	1		See 535046013001

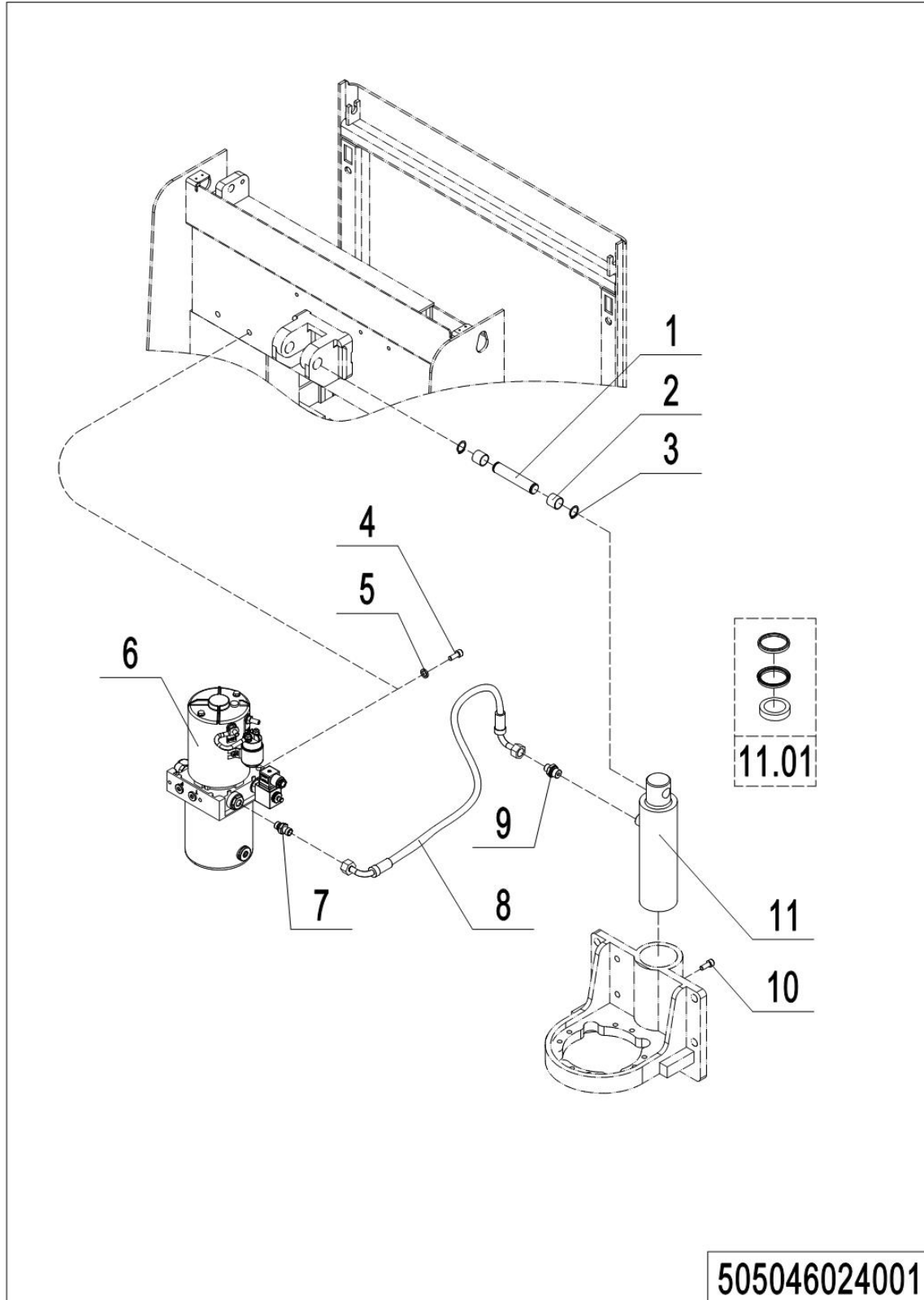
02 Drive Assembly 1.7kW (535046013502)

02 Drive Assembly 1.7kW (535046013502)

No.	Item Code	Mark	Item Description	Qty.	Substitute	Note
1	504498520016	1	Screw	4		
2	535098510004	2	Motor	1		
2.01	535098520041		Sensor	1		
2.02	535098520042		Wiring Board	1		
2.03	535098520043		Screw	4		
2.04	535098510005		Motor Kit	1		
2.05	535098520044		Sensor	1		
2.06	504498520011		Feather Key	1		
2.07	535098520045		Sensor	1		
3	504498510002	2	Rotary Table Kit	1		
4	504498520005	2	Bolt	5		
5	504498510003	2	Seal Kit	1		
6	940300400005		WheelΦ230x70	1		
7	504498520003	1	Nut	5		

Chapter 2: Hydraulic System

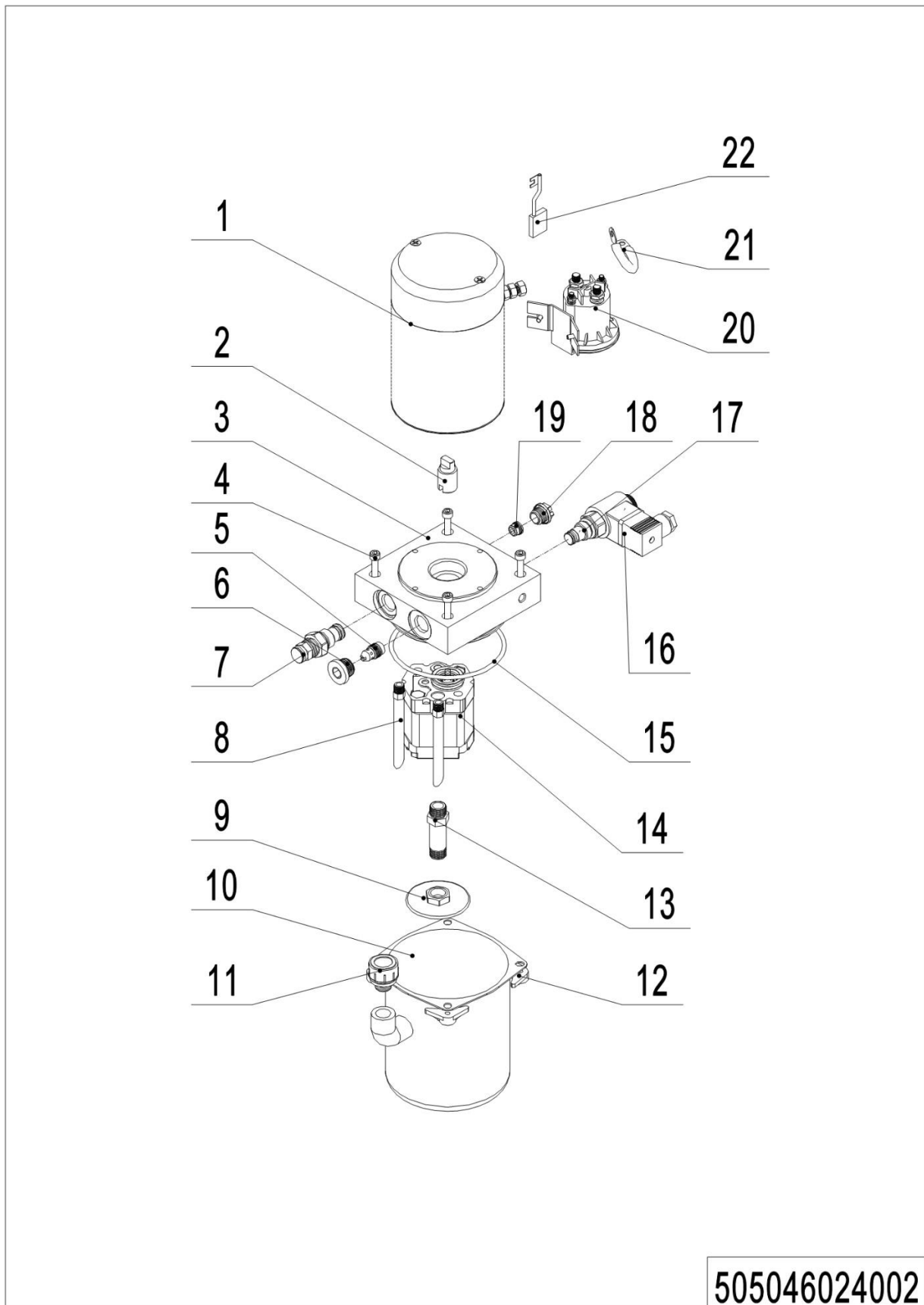
01 Hydraulic System (505046024001)



1= Supply as package. 2= Supply with constraints. 3= Phasing-out supply. 4= Supply as assembly. 5= Check other tables.

01 Hydraulic System (505046024001)

No.	Item Code	Mark	Item Description	Qty.	Substitute	Note
1	505638520033		Pin	1		
2	940500100019		Bushing	2		
3	910401300011	1	Circlip	2		
4	910200200077	1	Screw	2		
5	910400500007	1	Spring Washer	2		
6	950900100054		Pump Unit	1		See 505046024002
7	950400300004		Joint	1		
8	505024020005		Hose	1		
9	950400400001		Joint	1		
10	910200200075	1	Screw	1		
11	505024010001		Cylinder	1		
11.01	505098510005		Seal Kit	1		

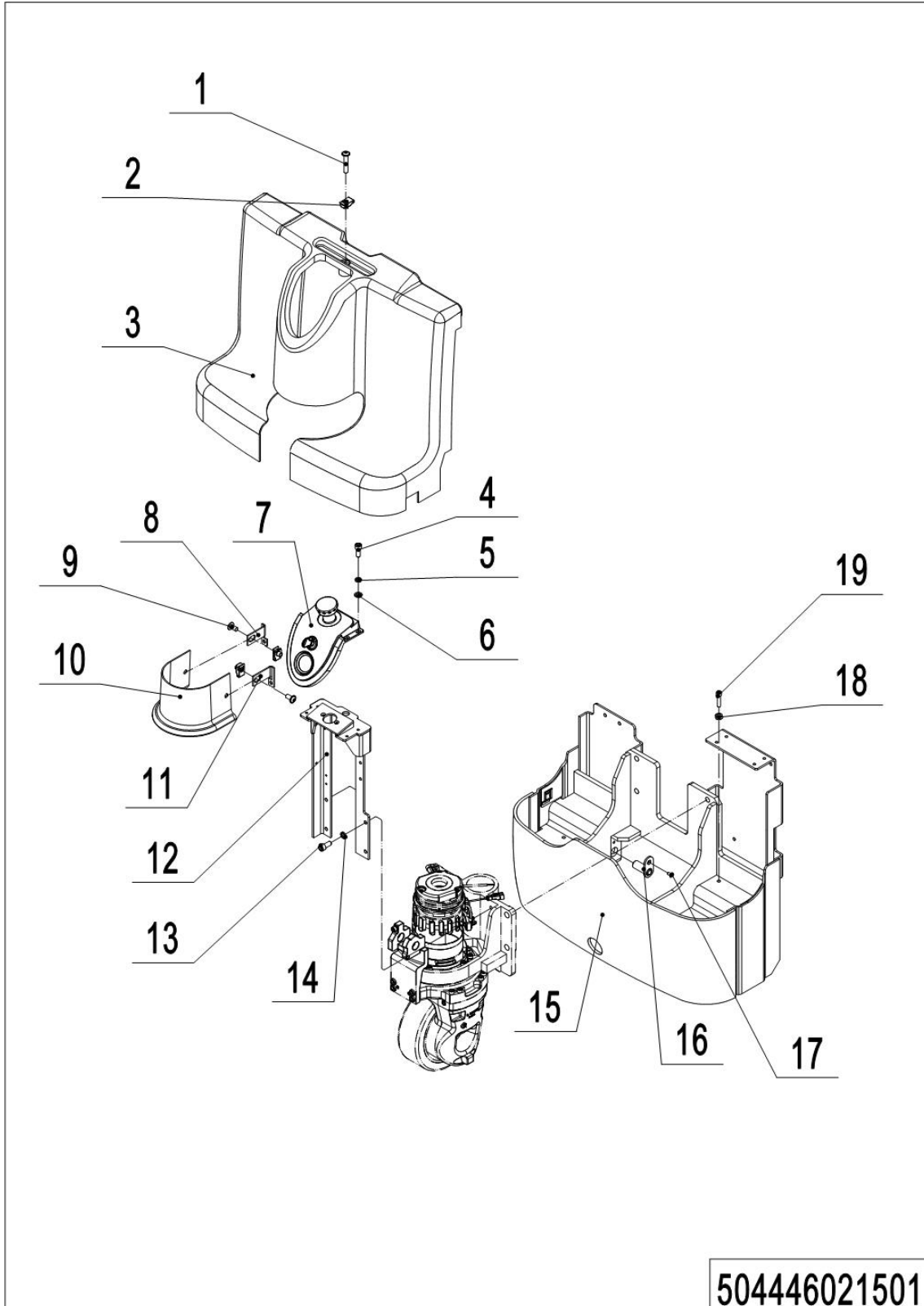
02 Hydraulic Power Unit (505046024002)

02 Hydraulic Power Unit (505046024002)

No.	Item Code	Mark	Item Description	Qty.	Substitute	Note
1	532098510001	2	Motor	1		
2	402698520021	2	Shaft coupling	1		
3	560898520042	2	Valve	1		
4	910200200040	2	Screw	4		
5	505798510006	2	Pressure-compensated valve	1		
6	402698520020	2	Stopper	1		
7	532098510007	2	Overflow valve	1		
8	505698520044	2	Oil return pipe	1		
9	402698520010	2	Filter	1		
10	505098510006	2	Cylinder	1		
11	505698520047	2	Oil filling point	2		
12	560898520043	2	Nut	1		
13	505098520004	2	Oil suction pipe	1		
14	532098510000	2	Gear pump	1		
15	532098520001	2	Seal ring	1		
16	505698520055	2	Control valve coil	1		
17	532098510006	2	Control valve core	1		
18	505798520015	2	Plastic block head	1		
19	505698520038	2	Check valve	1		
20	505698520034	2	Pump contactor	1		
21	505798510004	2	Connecting wire	1		
22	505798510013	2	Carbon brush	1		

Chapter 3: Truck Frame

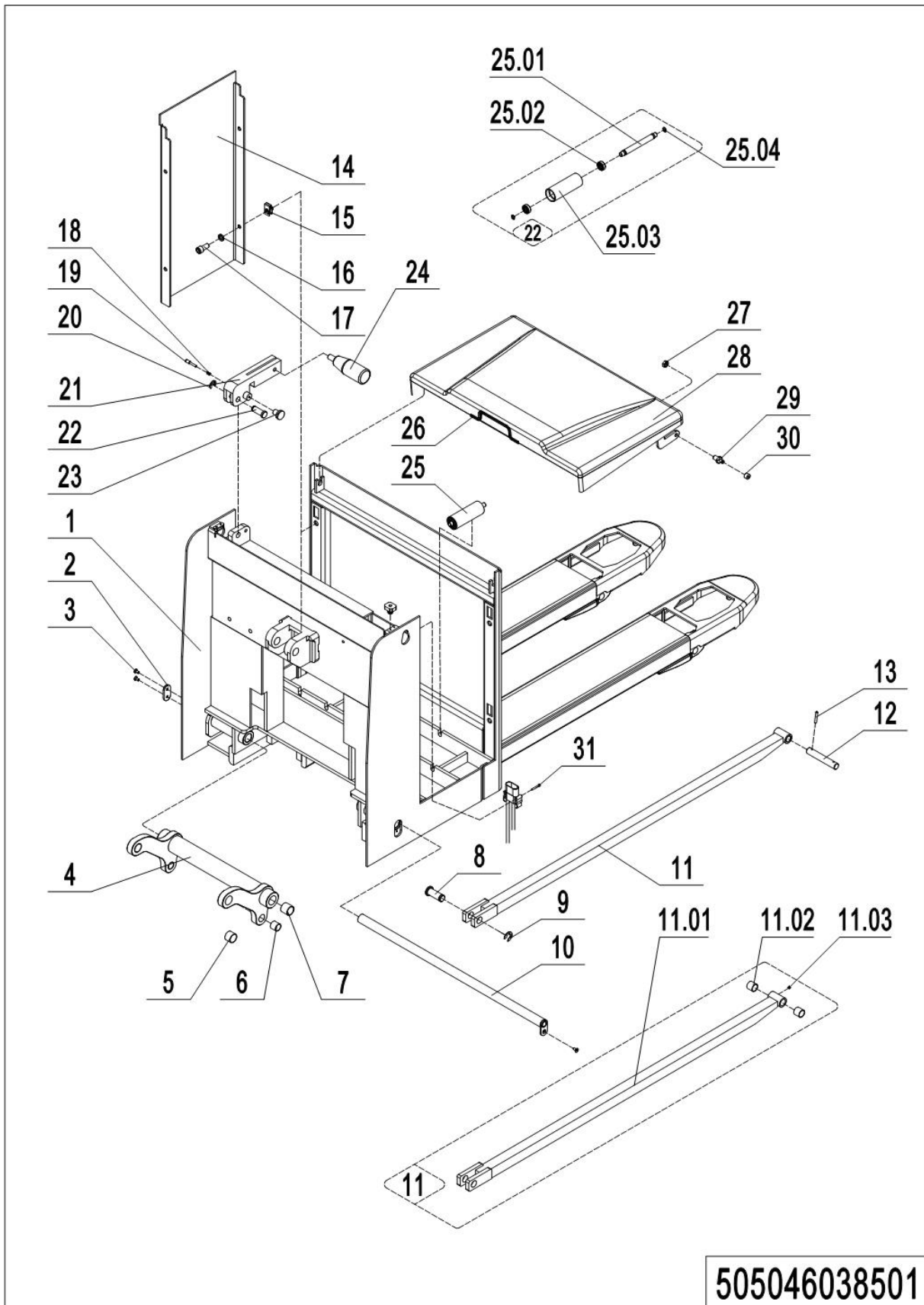
01 Truck Body (504446021501)



01 Truck Body (504446021501)

No.	Item Code	Mark	Item Description	Qty.	Substitute	Note
1	941100100006	1	Screw	1		
2	940400400003	1	Cage Nut	3		
3	505021520003		Protective Cover	1		
4	910200200035	1	Screw	4		
5	910400500005	1	Spring Washer	4		
6	910400100005	1	Flat Washer	4		
7	504410020001		Protective Cover	1		
8	505021520006		Mounting Plate	1		
9	941100100007	1	Screw	2		
10	505021520004		Protective Cover	1		
11	505021520007		Mounting Plate	1		
12	505021510002	1	Bracket	1		
13	910200200055	1	Screw	4		
14	910400500006	1	Spring Washer	4		
15	505021510001	2	Chassis	1		
16	505921510002		Pin	2		
17	910200400016	1	Screw	2		
18	910300100007	1	Nut	2		
19	910200200081	1	Screw	2		

02 Chassis(EU) (505046038501)

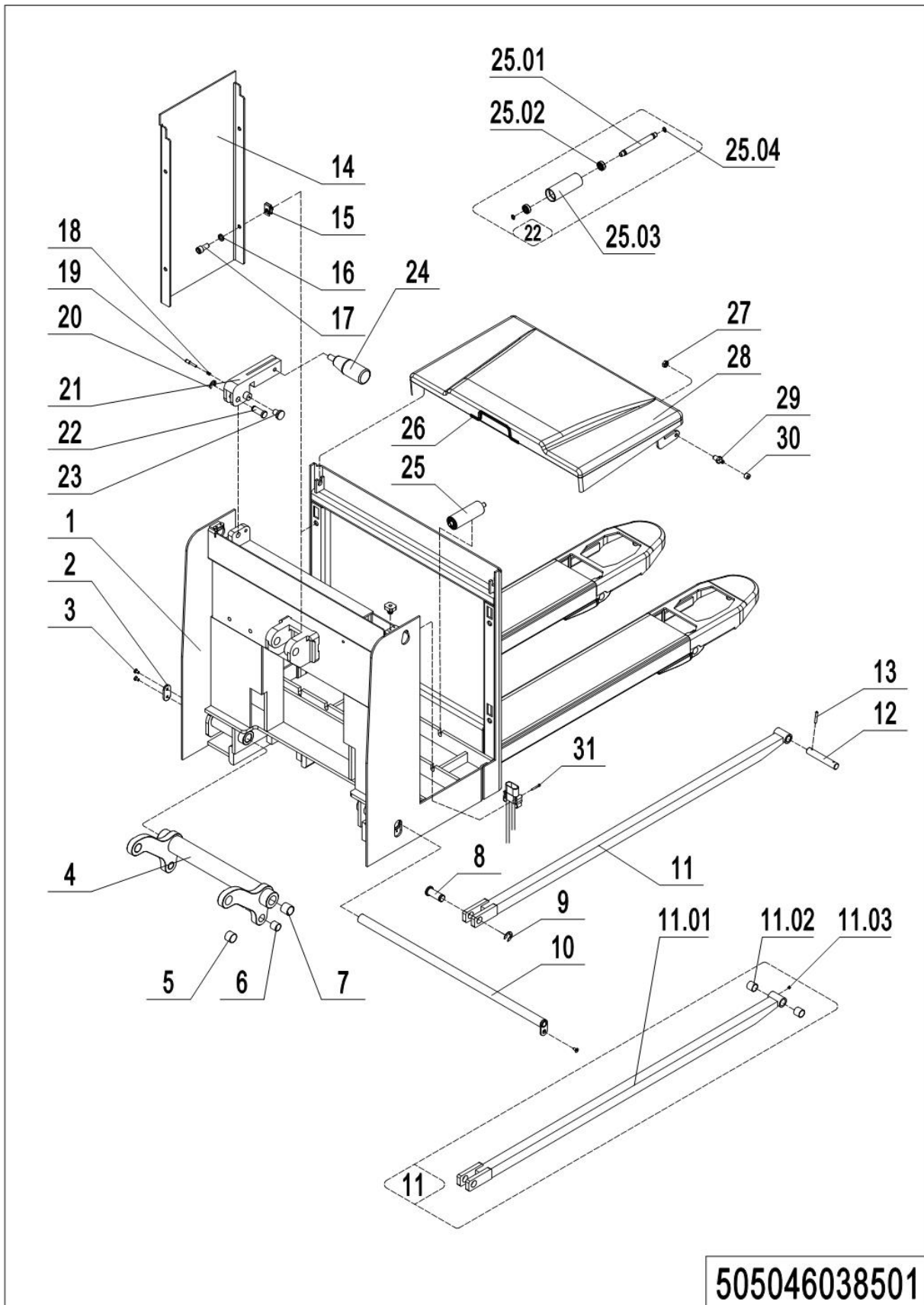


505046038501

02 Chassis(EU) (505046038501)

No.	Item Code	Mark	Item Description	Qty.	Substitute	Note
1	505038510001		Chassis(EU540x1150)	1		
1	505038510009		Chassis(EU685x1150)	1		
1	505038510003		Chassis(EU685x1220)	1		
1	505038510006		Chassis(EU685x1350)	1		
1	505038530010		Chassis(EU685x1500)	1		
1	505938530002		Chassis(EU685x1800)	1		
2	505638520031		Fixing Plate	1		
3	910200400016	1	Screw	3		
4	505638510001		Rise Arm	1		
4	505638510007		Rise Arm	1		
5	940500100027		Bushing	2		
6	940500100019		Bushing	2		
7	940500100032		Bushing	2		
8	505638520034		Pin	2		
9	910401700005	1	Circlip	2		
10	505638510003		Pin	1		
11	505098510001	2	Push Rod Kit(1150)	2		1150
11	505098510002	2	Push Rod Kit (1220)	2		1220
11	505098510008	2	Push Rod Kit (1350)	2		1350
11	505098510009	2	Push Rod Kit (1500)	2		1500
11	505098510010	2	Push Rod Kit (1800)	2		1800
11.01	505038510002		Push Rod (1150)	2		
11.01	505038510004		Push Rod (1220)	2		
11.01	505038510007		Push Rod (1350)	2		
11.01	505038530011		Push Rod (1500)	2		
11.01	505938530003		Push Rod (1800)	2		
11.02	940500100012		Bushing	2		
11.03	911200100001		Oil Cup	2		
12	505638520037		Axle	2		
13	910600500004		Spring Pin	2		

02 Chassis(EU) (504746038501) (505046038501) Continuation1

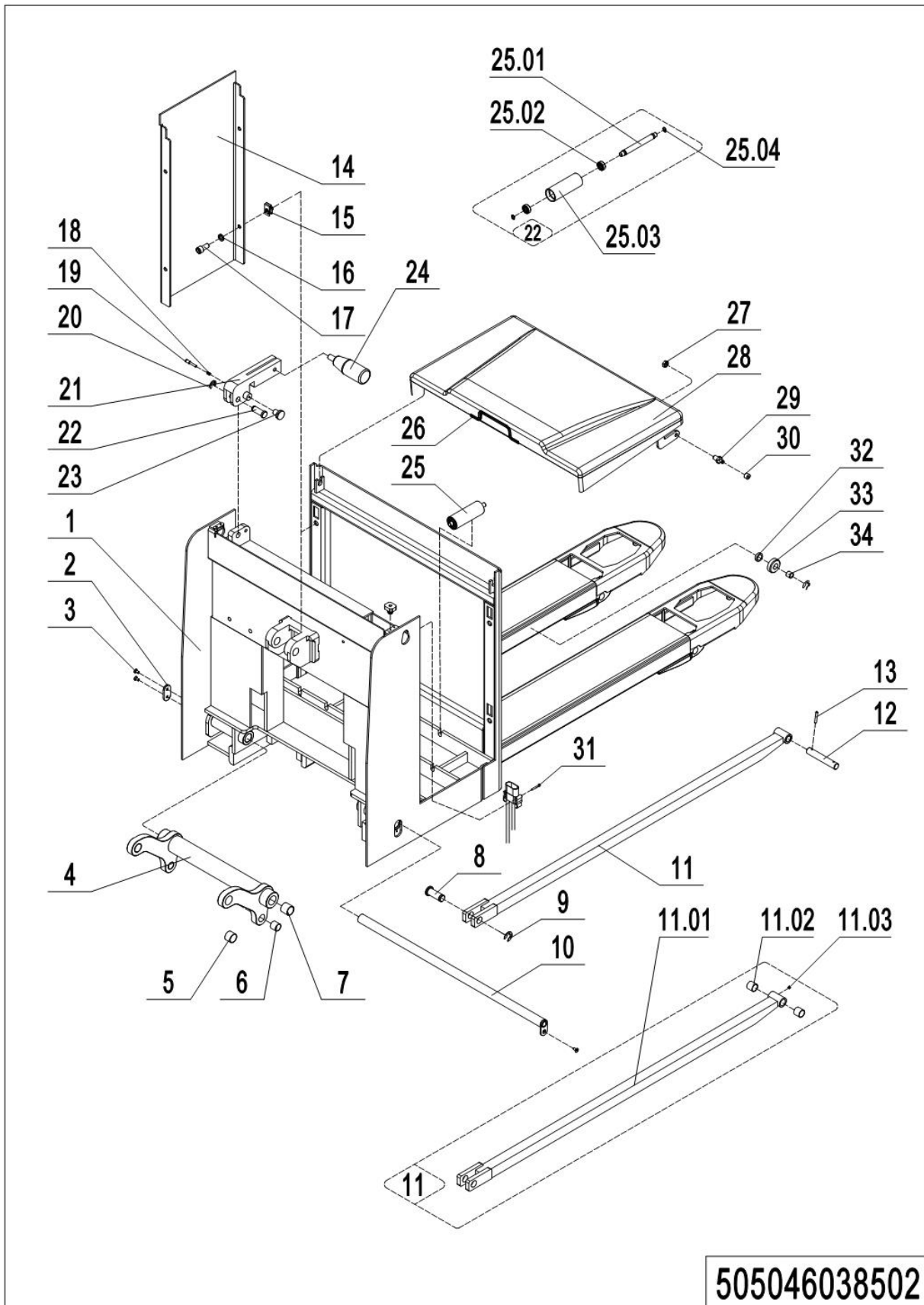


505046038501

02 Chassis(EU) (505046038501) Continuation1

No.	Item Code	Mark	Item Description	Qty.	Substitute	Note
14	504738520028		Panel	1		
15	940400400003		Cage Nut	4		
16	910400500007		Spring Washer	4		
17	910200200076		Screw	4		
18	940400500001		Spring	1		
19	505638520122		Screw	1		
20	910401700004		Circlip	1		
21	505638510026		Lock	1		
22	505638520117		Pin	1		
23	505638520123		Handle	1		
24	911000400001		Tiller	1		
25	505638510028		Roller	6		
25.01	505638520119		Axle	6		
25.02	910700200017		Bearing	12		
25.03	505638520120		Roller	6		
25.04	910401300006		Circlip	12		
26	505921020007		Sealing Strip	1		
27	910300300005		Nut	2		
28	505621010002		Cell Cover	1		
29	505621020004		Crash Pad	2		
30	505621020004		Crash Pad	2		
31	910200200043		Screw	2		

03 Chassis(US)(505046038502)

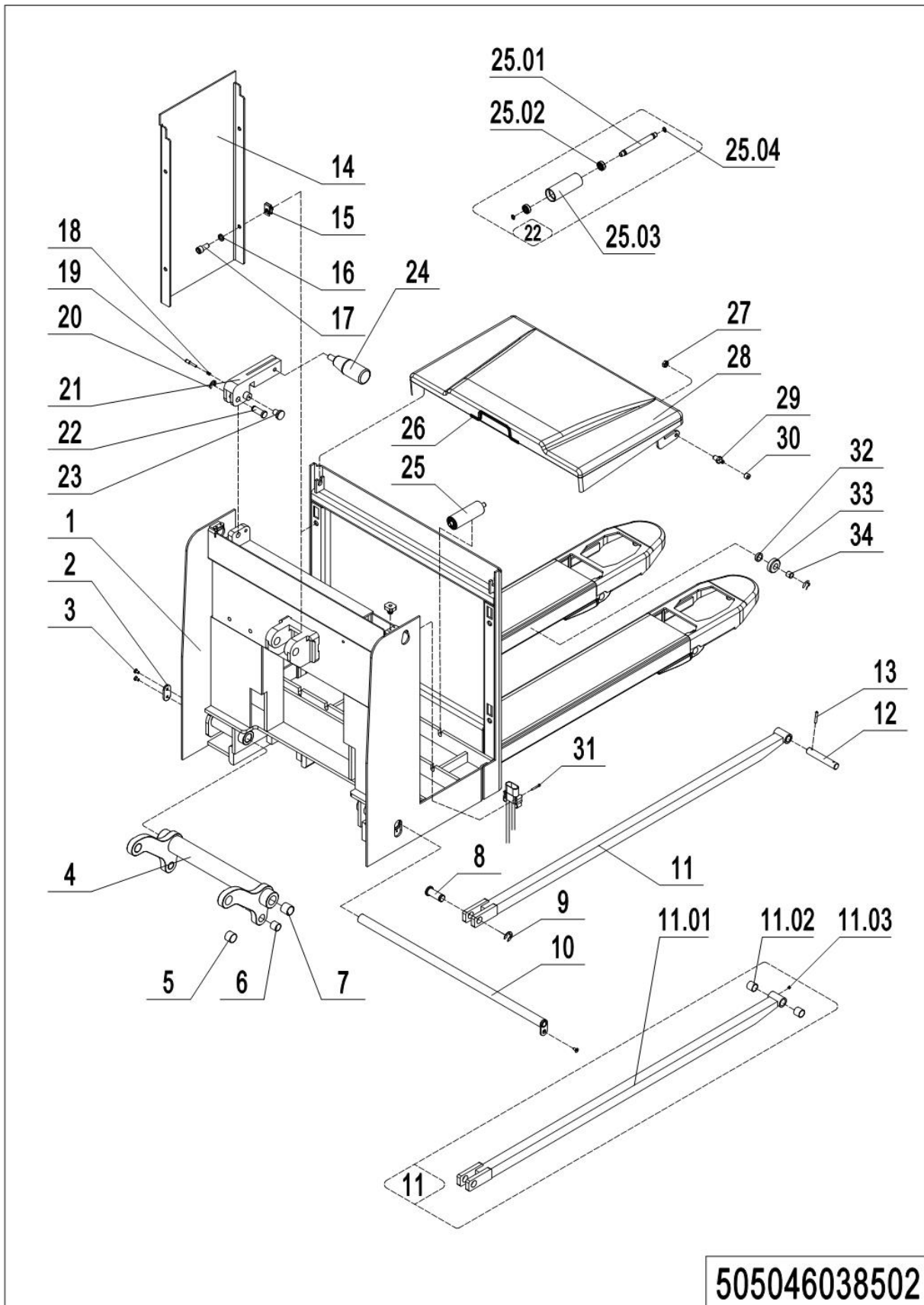


505046038502

02 Chassis(US) (505046038502)

No.	Item Code	Mark	Item Description	Qty.	Substitute	Note
1	505038510005		Chassis (US685x1220)	1		
2	505638520031		Fixing Plate	1		
3	910200400016	1	Screw	3		
4	505638510007		Rise Arm	1		
5	940500100027		Bushing	2		
6	940500100019		Bushing	2		
7	940500100032		Bushing	2		
8	505638520034		Pin	2		
9	910401700005	1	Circlip	2		
10	505638510003		Pin	1		
11	505098510002	2	Push Rod Kit(1220)	2		1150
11.01	505038510004		Push Rod (1220)	2		
11.02	940500100012		Bushing	2		
11.03	911200100001		Oil Cup	6		
12	505638520037		Axle	2		
13	910600500004		Spring Pin	2		
14	504738520028		Panel	1		
15	940400400003		Cage Nut	4		
16	910400500007		Spring Washer	4		
17	910200200076		Screw	4		
18	940400500001		Spring	1		
19	505638520122		Screw	1		
20	910401700004		Circlip	1		
21	505638510026		Lock	1		
22	505638520117		Pin	1		
23	505638520123		Handle	1		
24	911000400001		Tiller	1		
25	505638510028		Roller	6		
25.01	505638520119		Axle	6		
25.02	910700200017		Bearing	12		

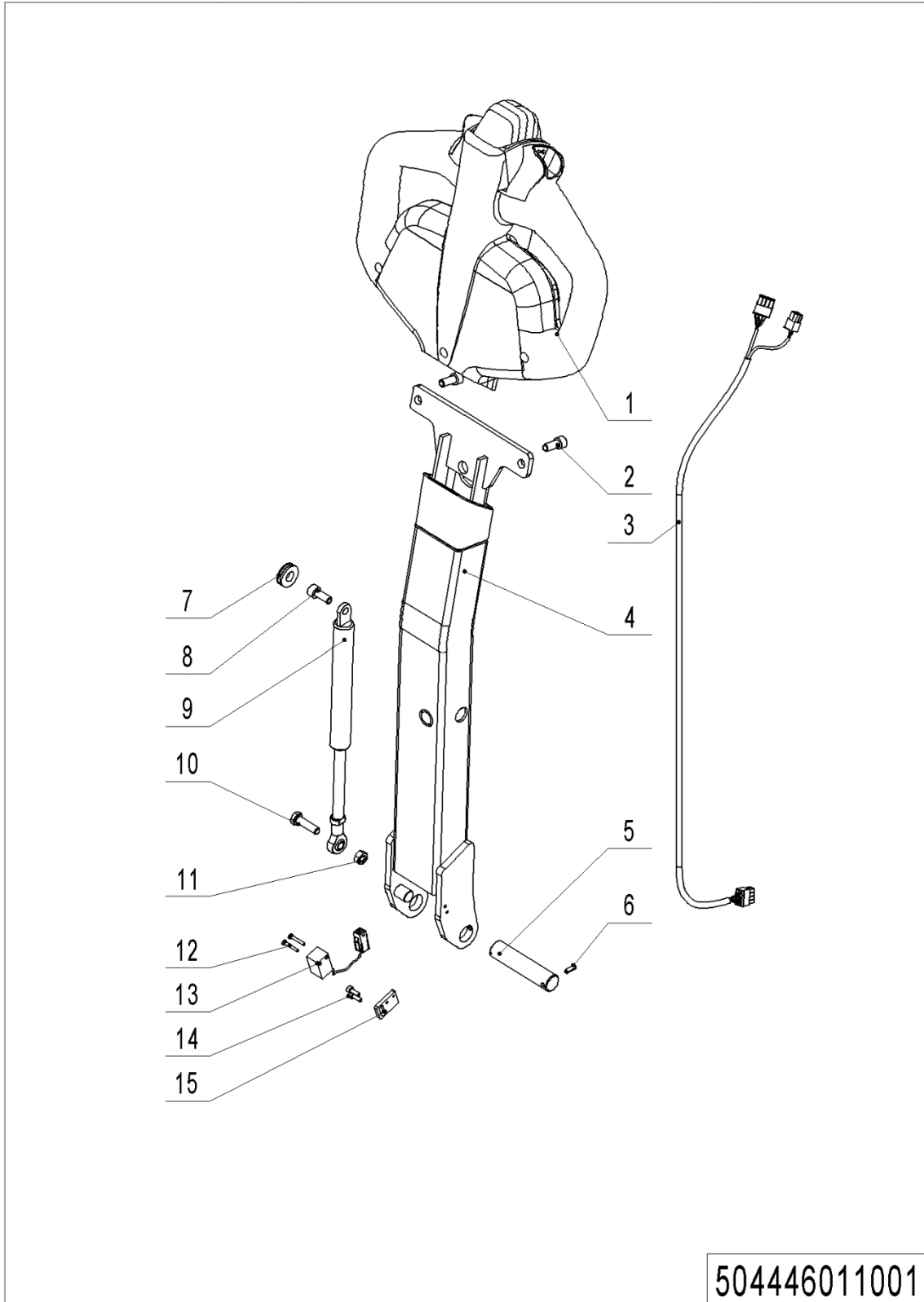
03 Chassis(US) (505046038501) Continuation1



505046038502

03 Chassis(US) (505046038501) Continuation1

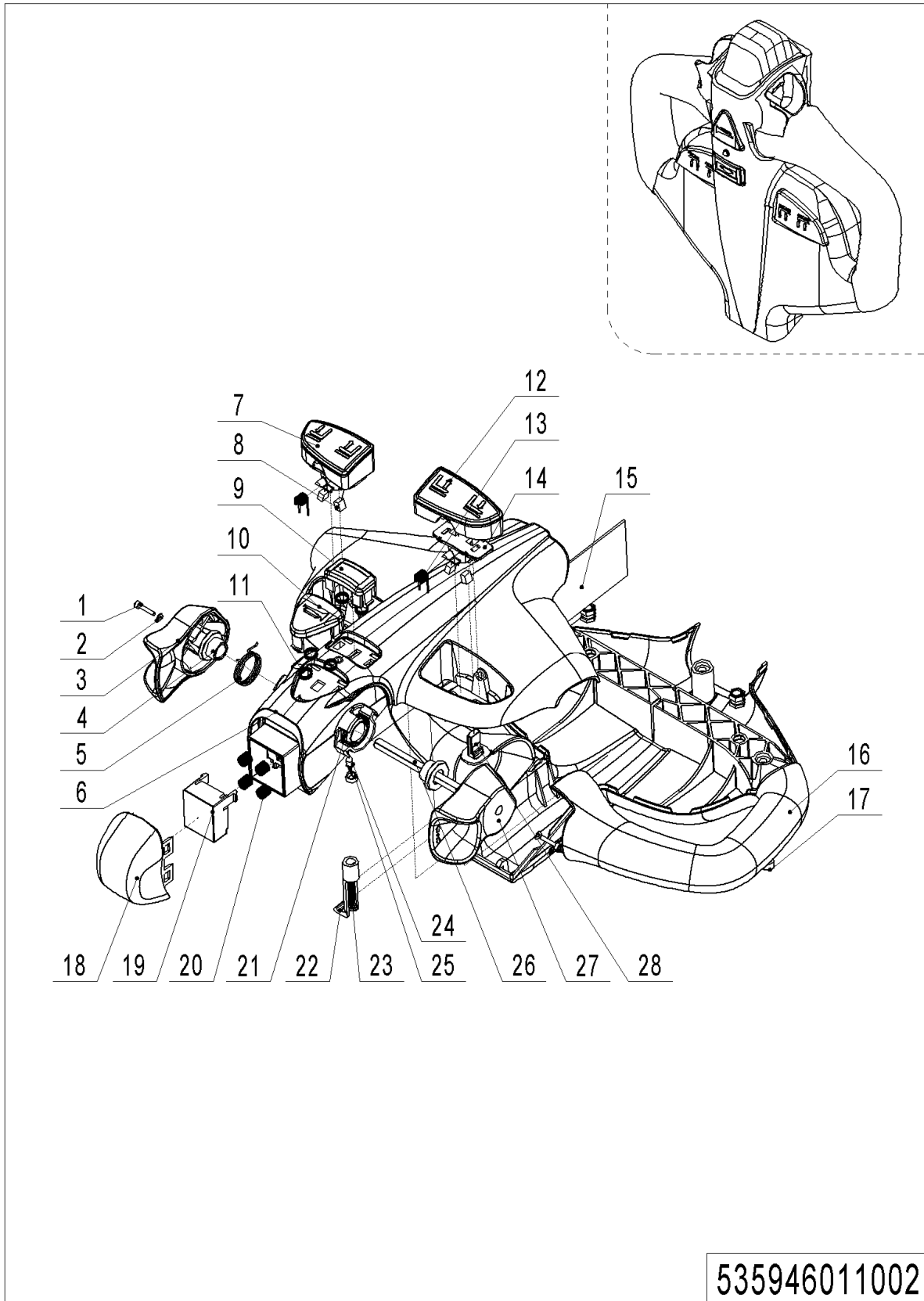
No.	Item Code	Mark	Item Description	Qty.	Substitute	Note
25.03	505638520120		Roller	6		
25.04	910401300006		Circlip	12		
26	505921020007		Sealing Strip	1		
27	910300300005		Nut	2		
28	505621010002		Cell Cover	1		
29	505621020005		Crash Pad	2		
30	505621020004		Crash Pad	2		
31	910200200043		Screw	2		
32	940600500014		Washer	4		
33	504738520053		Roller	4		
34	940500100017		Bushing	4		

Chapter 4: Steering System, Braking System, Wheels**01 Tiller (504446011001)**

01 Tiller (504446011001)

No.	Item Code	Mark	Item Description	Qty.	Substitute	Note
1	922100100001		Tiller	1		See 535946011002
1	922100100099		Tiller	1		See 566546010002
2	910200200057	1	Screw	2		
3	534733010001		Wire Harness	1		
4	504411010001		Tiller	1		
5	504411020011		Axle	1		
6	910600400009	1	Spring Pin	1		
7	502311020009		Close Plate	1		
8	941100400001	1	Screw	1		
9	940400100011		Air Spring	1		
10	910100300024	1	Bolt	1		
11	910300100006	1	Nut	1		
12	910200500015	1	Screw	2		
13	505633510002		Proximity Switch	1		
14	910200200014	1	Screw	2		
15	504411020009		Baseboard	1		

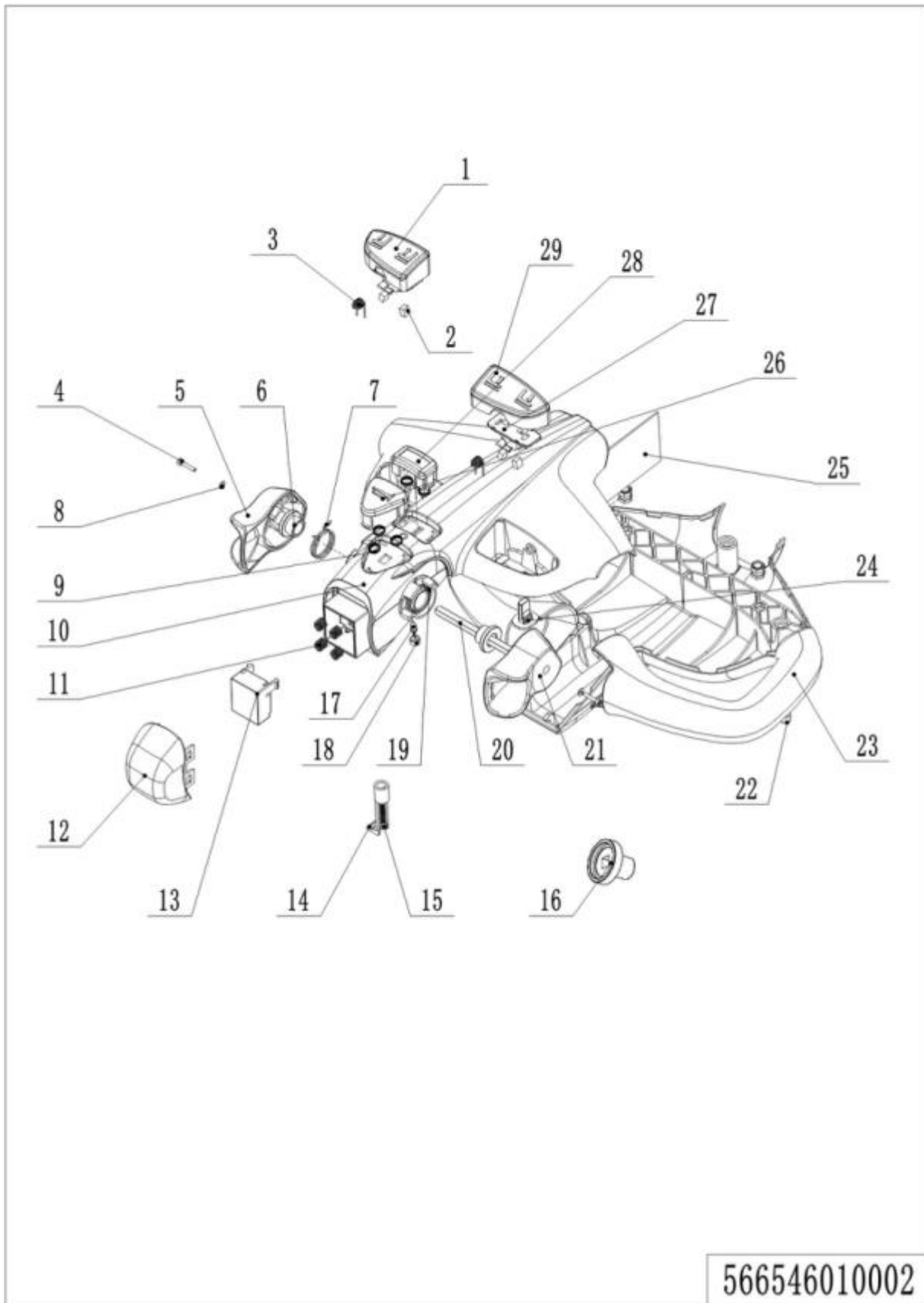
02 Tiller (535946011002)



535946011002

02 Tiller (535946011002)

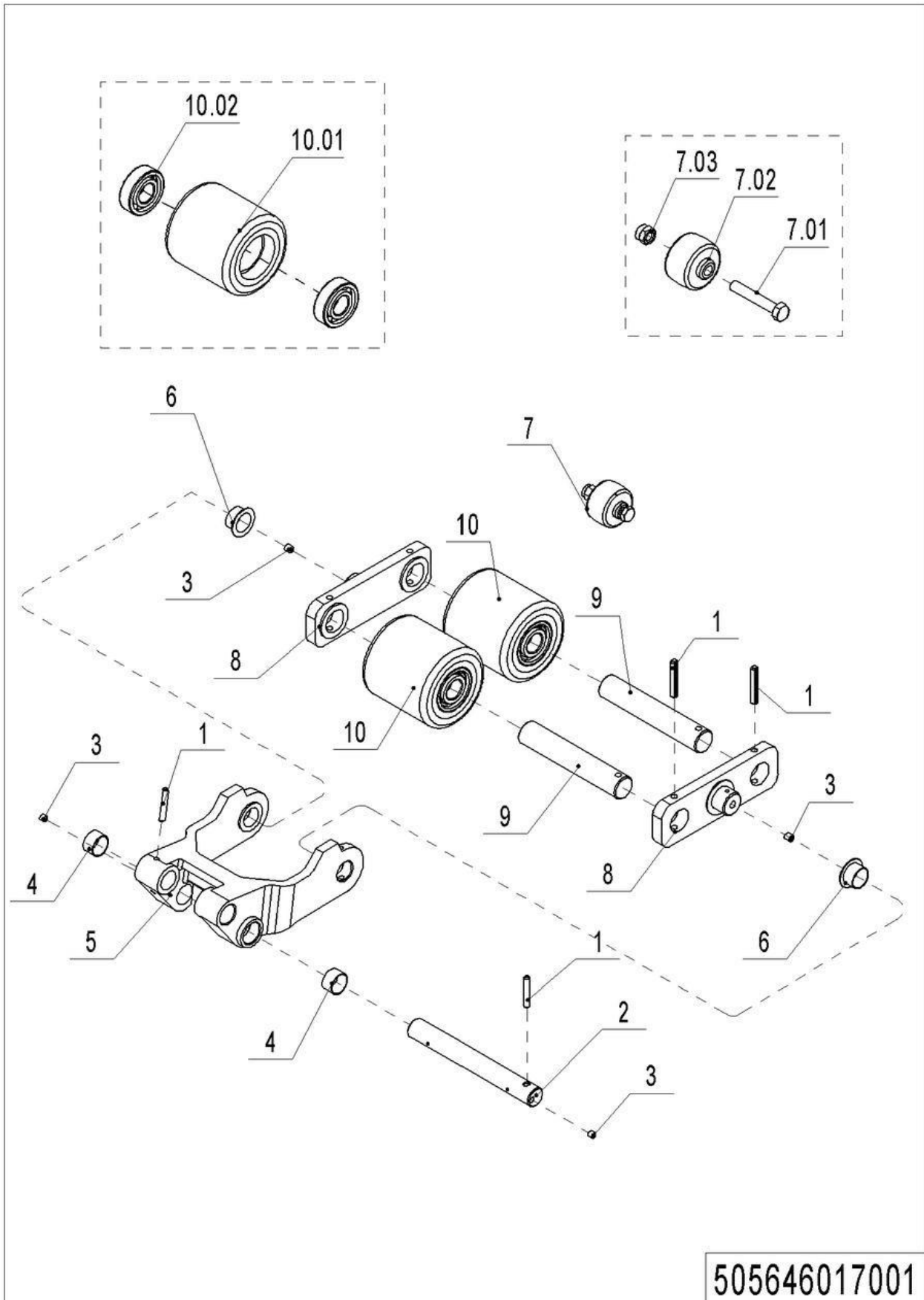
No.	Item Code	Mark	Item Description	Qty.	Substitute	Note
--	922100100001		Tiller	1		
1	505698520008		Screw	2		
2	505698520009		Washer	2		
3	505698520001		Traction lever	1		
4	505698520004		Sleeve	2		
5	505698520027		Torsional Spring	1		
6	505698520014		Handle Cap	1		
7	505698520016		Button cap	1		
8	505698520005		Magnet	4		
9	505698520021		Button Cap	1		
10	505698520002		Horn Button	1		
11	505698520003		Spring	5		
12	505698520022		Button Cap	1		
13	505698520018		Torsional Spring	2		
14	505698520017		Fixing Base	2		
15	505698520028		circuit Board	1		
16	505698520015		Handle Cap	1		
17	505698520007		Screw	3		
18	505698520020		Button Cap-	1		
19	505698520019		Pedestal	1		
20	505698520006		Spring	4		
21	505698520026		Torsional Spring	1		
22	505698520012		Clamp	1		
23	505698520023		Screw	1		
24	505698520024		Light	1		
25	505698520025		Lamp Holder	1		
26	505698520011		Axle-Traction lever	1		
27	505698520010		Traction lever	1		
28	505698520013		Sensor	2		

03 Tiller (566546010002)

03 Tiller (566546010002)

No.	Item Code	Mark	Item Description	Qty.	Substitute	Note
1	505698520016		Button cap	1		
2	505698520005		Magnet	4		
3	505698520018		Torsional Spring	2		
4	505698520008		Screw	2		
5	505698520001		Traction lever	1		
6	505698520004		Sleeve	2		
7	505698520027		Torsional Spring	1		
8	505698520009		Washer	2		
9	505698520003		Spring	5		
10	505698520099		Handle Cap	1		
11	505698520006		Spring	4		
12	505698520020		Button Cap-	1		
13	505698520100		Pedestal	1		
14	505698520012		Clamp	1		
15	505698520023		Screw	1		
16	505698520102		Magnet holder	2		
17	505698520024		Light	1		
18	505698520025		Lamp Holder	1		
19	505698520026		Torsional Spring	1		
20	505698520011		Axle-Traction lever	1		
21	505698520010		Traction lever	1		
22	505698520007		Screw	3		
23	505698520015		Handle Cap	1		
24	505698520013		Sensor	2		
25	505698520101		circuit Board	1		
26	505698520002		Horn Button	1		
27	505698520017		Fixing Base	2		
28	505698520021		Button Cap	1		
29	505698520022		Button Cap	1		

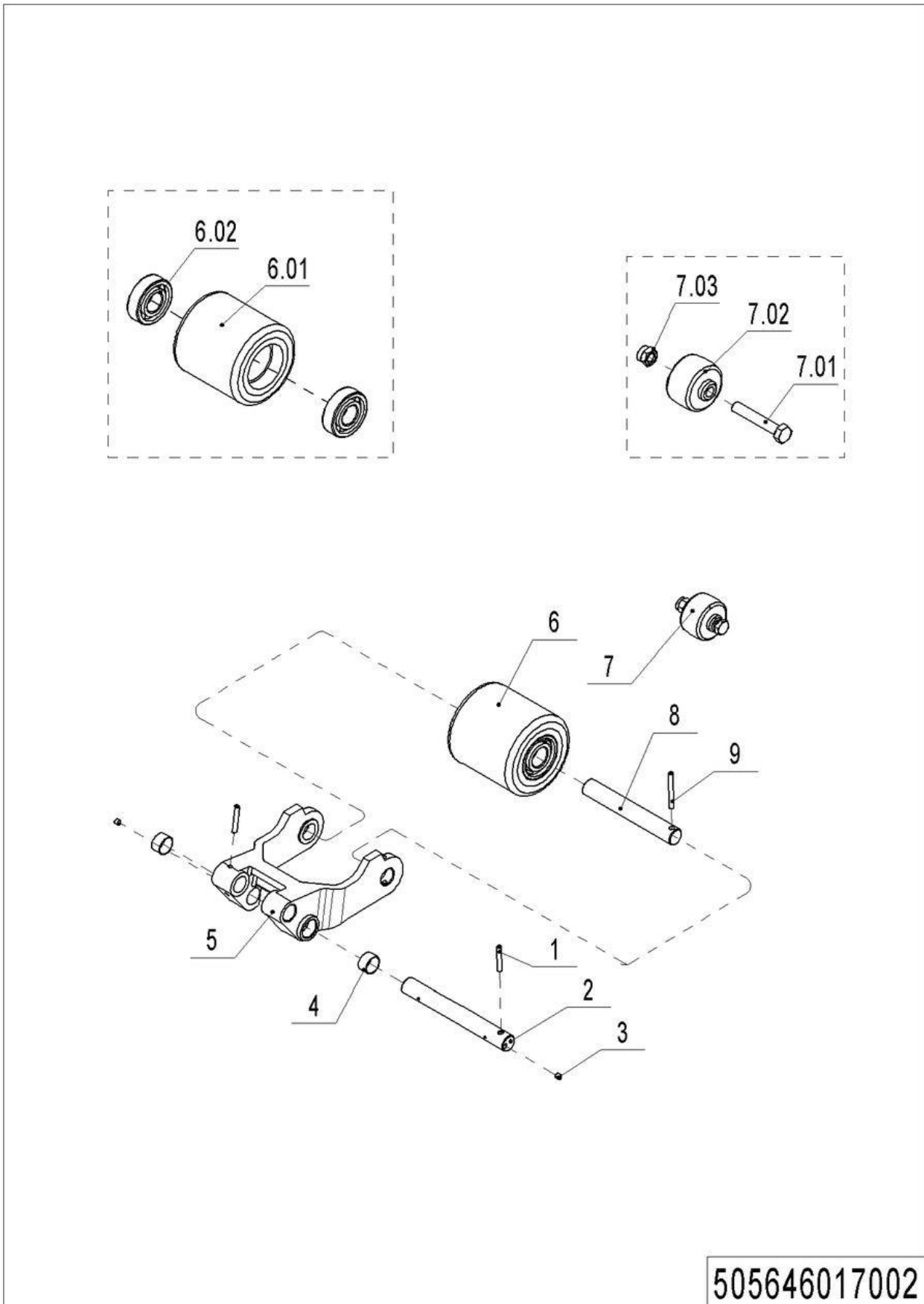
04 Load Wheel (Tandem) (505646017001)



505646017001

04 Load Wheel (Tandem) (505646017001)

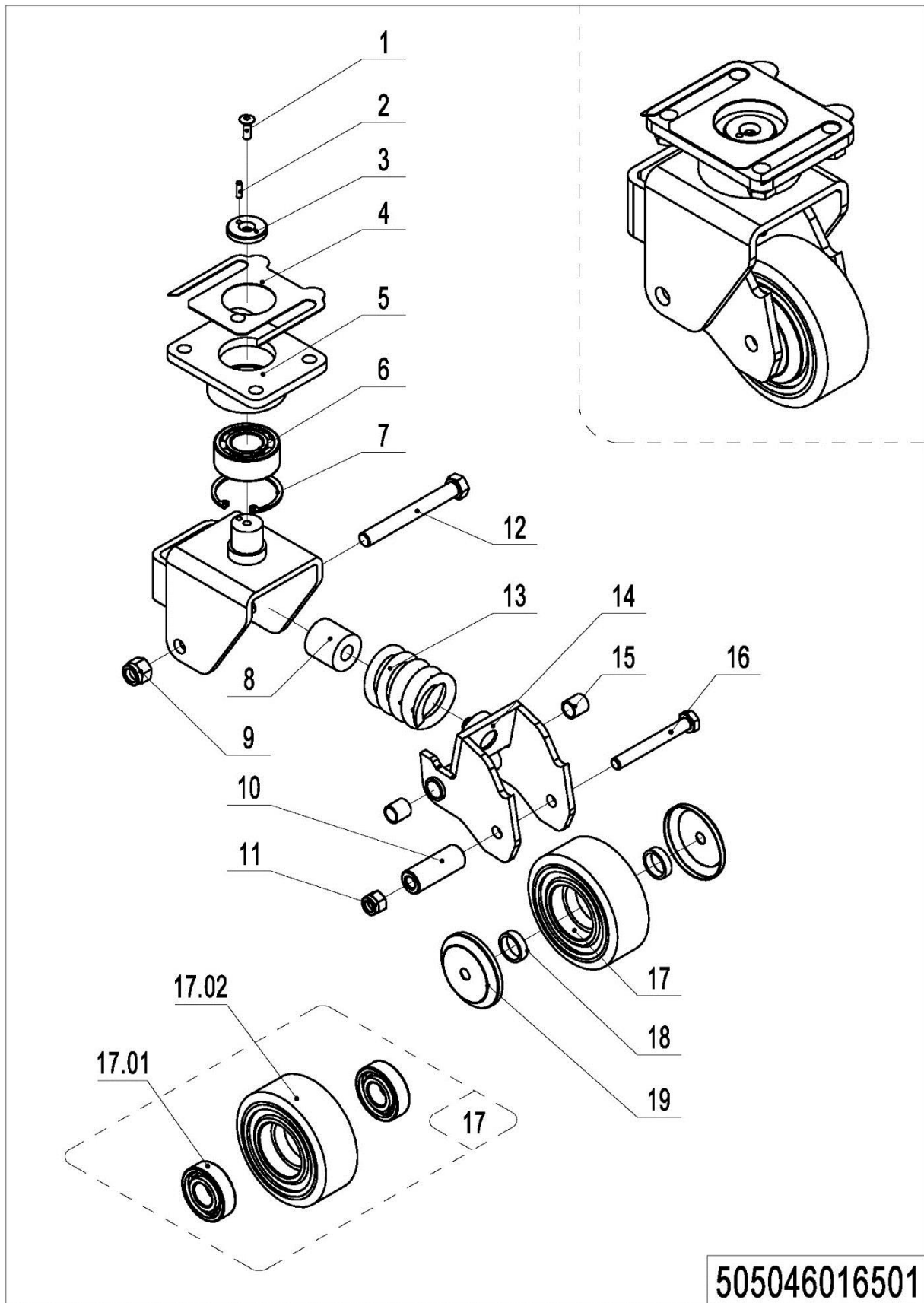
No.	Item Code	Mark	Item Description	Qty.	Substitute	Note
1	910600400027	1	Spring Pin	8		
2	505638520038		Pin	2		
3	911200100001		Oil Cup	2		
4	940500100012		Bushing	4		
5	505638520036		Riser	2		
6	940500200003		Bushing	2		
7	502398510003		Pulley components	2		
7.01	910100100035	1	Bolt	2		
7.02	505638520039		Running Pulley	2		
7.03	910300500005	1	Nut	2		
8	505617020001		Plate	4		
9	505617020000		Axle	4		
10	505698510003		Wheel	4		
10.01	940300300010		Wheel Φ 84x84	4		
10.02	910700200019		Bearing	8		

05 Load Wheel (Single) (505646017002)

05 Load Wheel (Single) (505646017002)

No.	Item Code	Mark	Item Description	Qty.	Substitute	Note
1	910600400027	1	Spring Pin	4		
2	505638520038		Pin	2		
3	911200100001		Oil Cup	2		
4	940500100012		Bushing	4		
5	505638520036		Riser	2		
6	505698510004		Wheel	2		
6.01	940300300006		WheelΦ82x110	2		
6.02	910700200019		Bearing	4		
7	502398510003		Pulley components	2		
7.01	910100100035	1	Bolt	2		
7.02	505638520039		Running Pulley	2		
7.03	910300500005	1	Nut	2		
8	505617020002		Axle	2		
9	910600400030	1	Spring Pin	4		

06 Caster (505046016501)

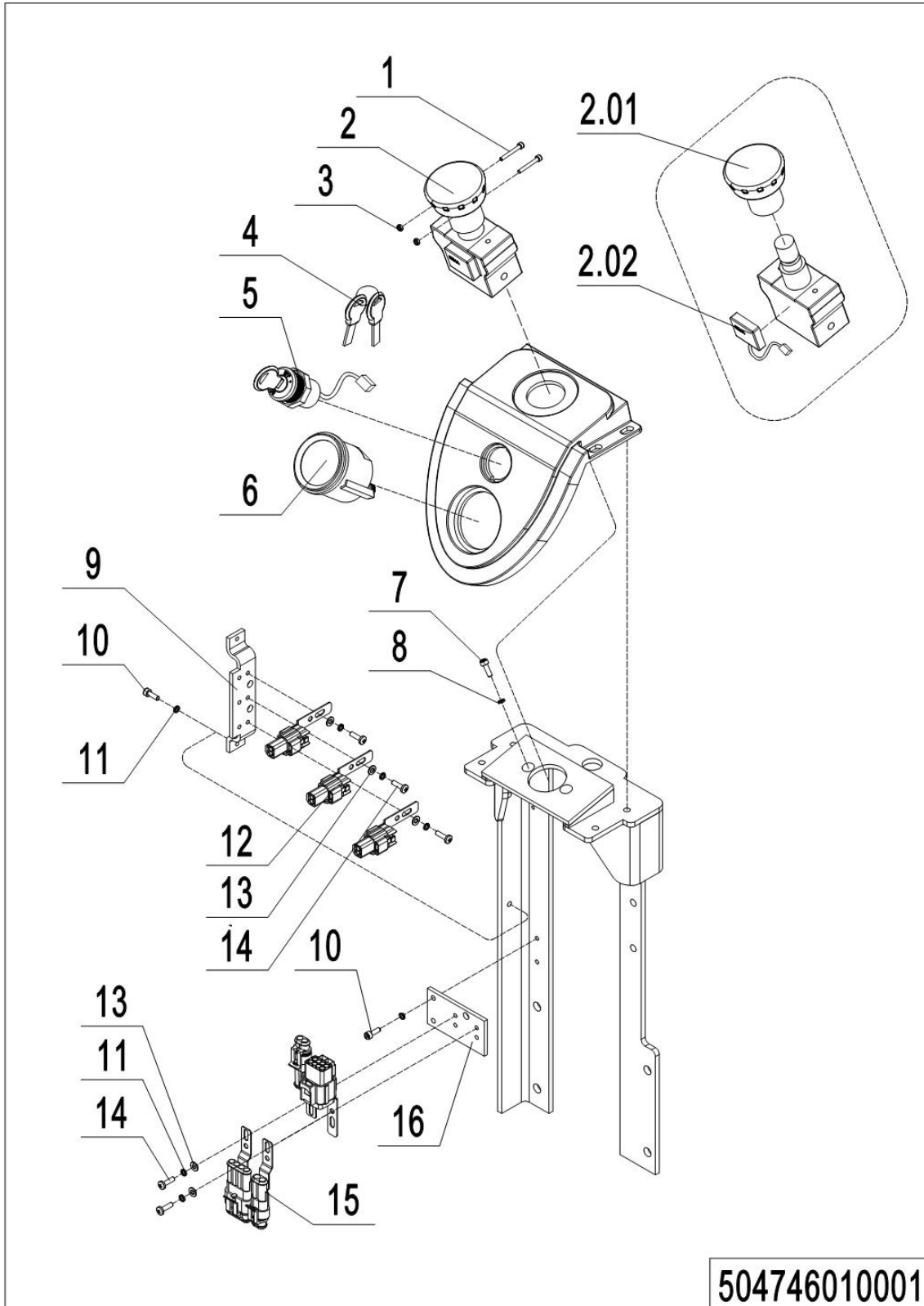


06 Caster (505046016501)

No.	Item Code	Mark	Item Description	Qty.	Substitute	Note
--	505016510001		Caster Assembly	1		
1	941100300001	1	Screw	1		
2	910600100004	1	Cylindrical Pin	1		
3	505616520007	1	Retaining Ring	1		
4	505616520014		Pad	1		
5	504416510002	2	Plate	1		
6	910700500002		Bearing	1		
7	910401400016	1	Circlip	1		
8	505616520000		Spring	1		
9	910300500006	1	Nut	1		
10	505616520013	1	Bushing	1		
11	910300500005	1	Nut	1		
12	941100200002	1	Bolt	1		
13	940400500007	1	Spring	1		
14	505616510003	2	Whirling Arm	1		
15	940500100002		Bushing	2		
16	910100100038	1	Bolt	1		
17	505698510000		Wheel	1		
17.01	910700200019		Bearing	2		
17.02	940300300018		WheelΦ100x40	1		
18	505616520012	1	Check Ring	2		
19	505616520011		Dust Cap	2		

Chapter 5: Electrical Parts

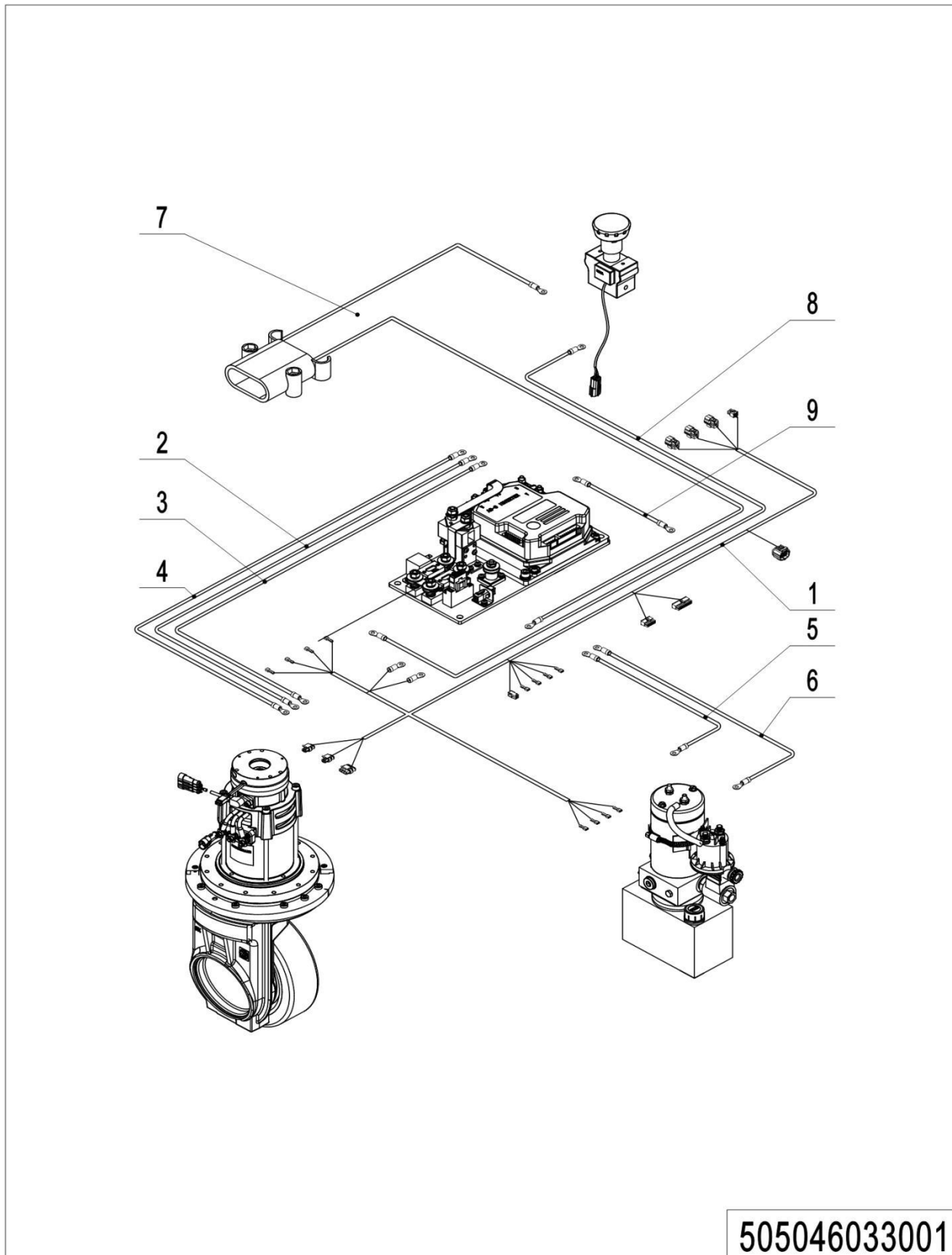
01 Display Assembly (504746010001)



504746010001

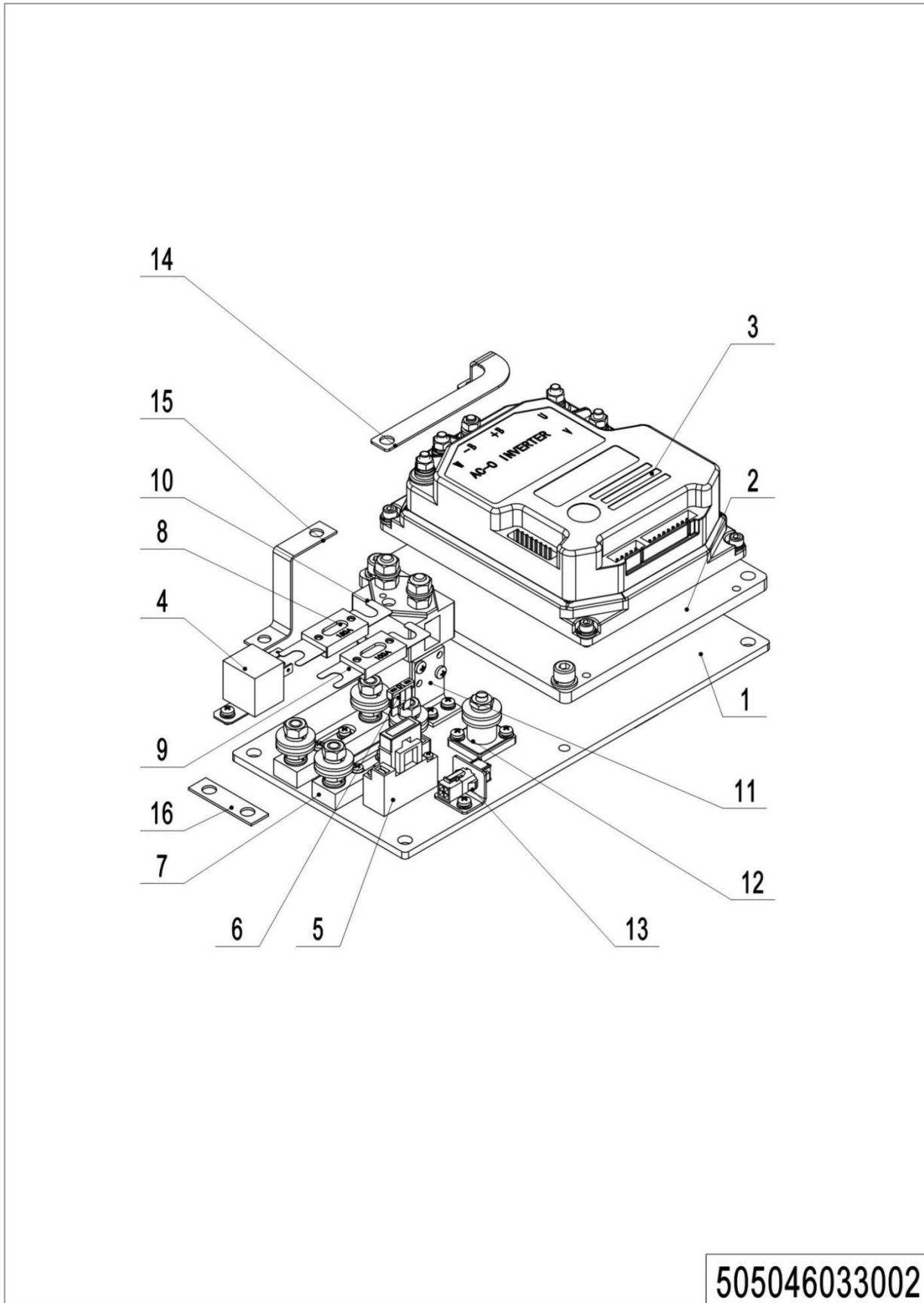
01 Display Assembly (504746010001)

No.	Item Code	Mark	Item Description	Qty.	Substitute	Note
1	910200500016		Screw	2		
2	920200100001		Emergency Button	1		
2.01	920200100008		Emergency Button	1		
2.02	505698520030		Proximity Switch	1		
3	910300100002		Nut	2		
4	920200200002		Key Switch	1		
5	505634010000		Key Switch	1		
5	505634010001		Key Switch	1		
6	921100100012		Display	1		
6	921100100116		Display	1		curtis
7	910200200023		Screw	2		
8	910400500004		Spring Washer	2		
9	504421520023		Bracket	1		
10	910200200014		Screw	4		
11	910400500003		Spring Washer	10		
12	921300300005		Holder	5		
13	910400100003		Flat Washer	3		
14	910200500022		Screw	6		
15	921300300010		Connector Holder	3		
16	504421520024		Plate	1		

02 Wire Harness (505046033001)

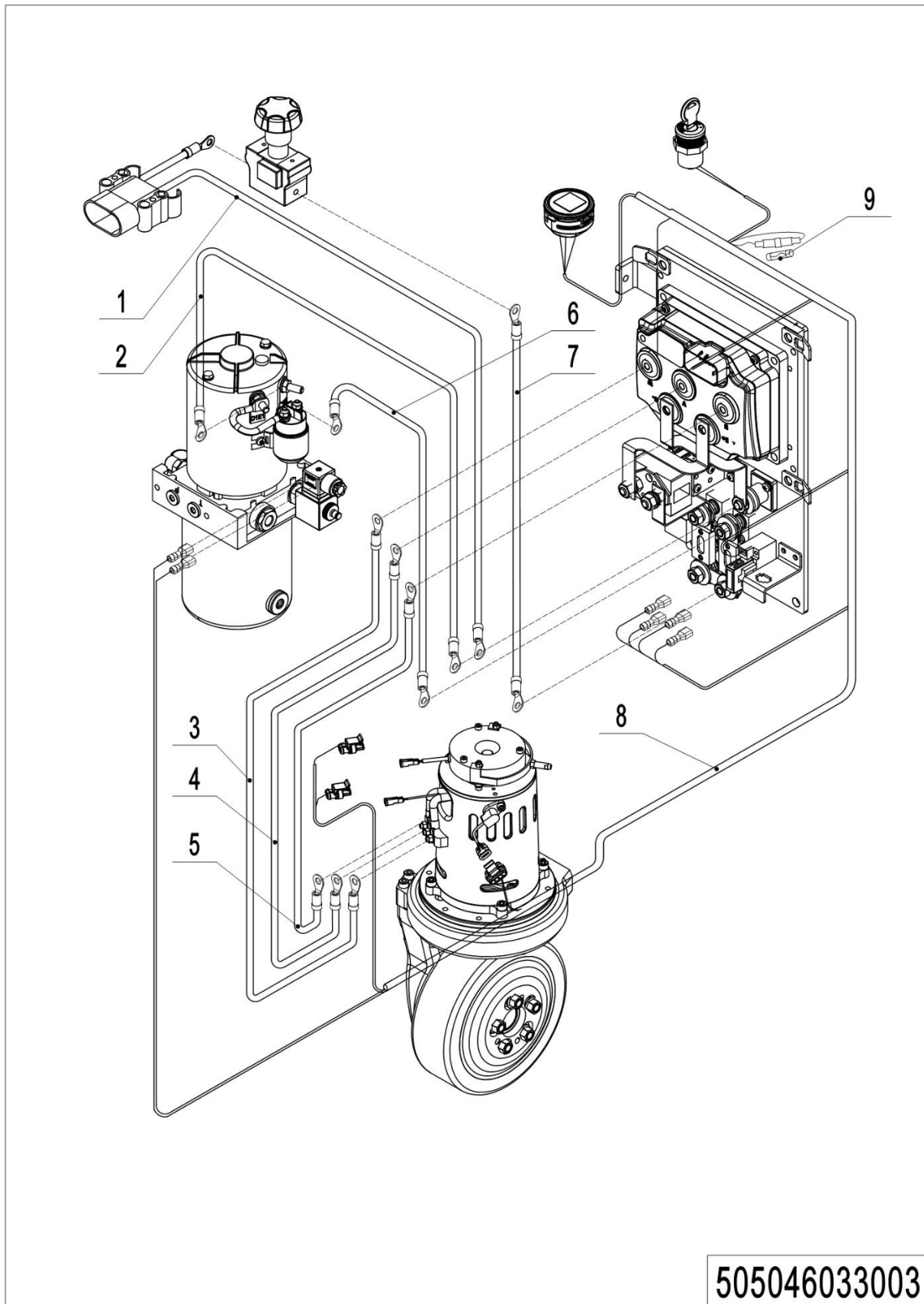
02 Wire Harness (505046033001)

No.	Item Code	Mark	Item Description	Qty.	Substitute	Note
1	505033010000		Wire Harness	1		
1	505033010005		Wire Harness	1		Li battery
2	504433010003		Cable	1		
3	504433010004		Cable	1		
4	504433010005		Cable	1		
5	505033010001		Cable	1		
6	505033010002		Cable	1		
7	505033010003		Wire Harness	1		
7	505033010006		Wire Harness	1		Li battery
8	505033010004		Cable	1		
9	504433010010		Cable	1		

03 Controller (505046033002)

03 Controller (505046033002)

No.	Item Code	Mark	Item Description	Qty.	Substitute	Note
1	504421520025		Mounting Plate	1		
2	504433020000		Plate	1		
3	921400100025		Controller	1		
4	920800100001		Relay	1		
5	920100400006		Fuse Holder	1		
6	920100200002		Fuse	1		
7	920100400002		Fuse Holder	1		
8	920100100007		Fuse	1		
9	910400100004		Flat Washer	1		
10	920700100004		Contactactor	1		
11	921300400001		Holder	1		
12	920100400001		Fuse Holder	1		
13	921300300001		Holder	1		
14	504433020001		Copper Busbar	1		
15	505633020002		Copper Busbar	1		
16	505633020003		Copper Busbar	1		

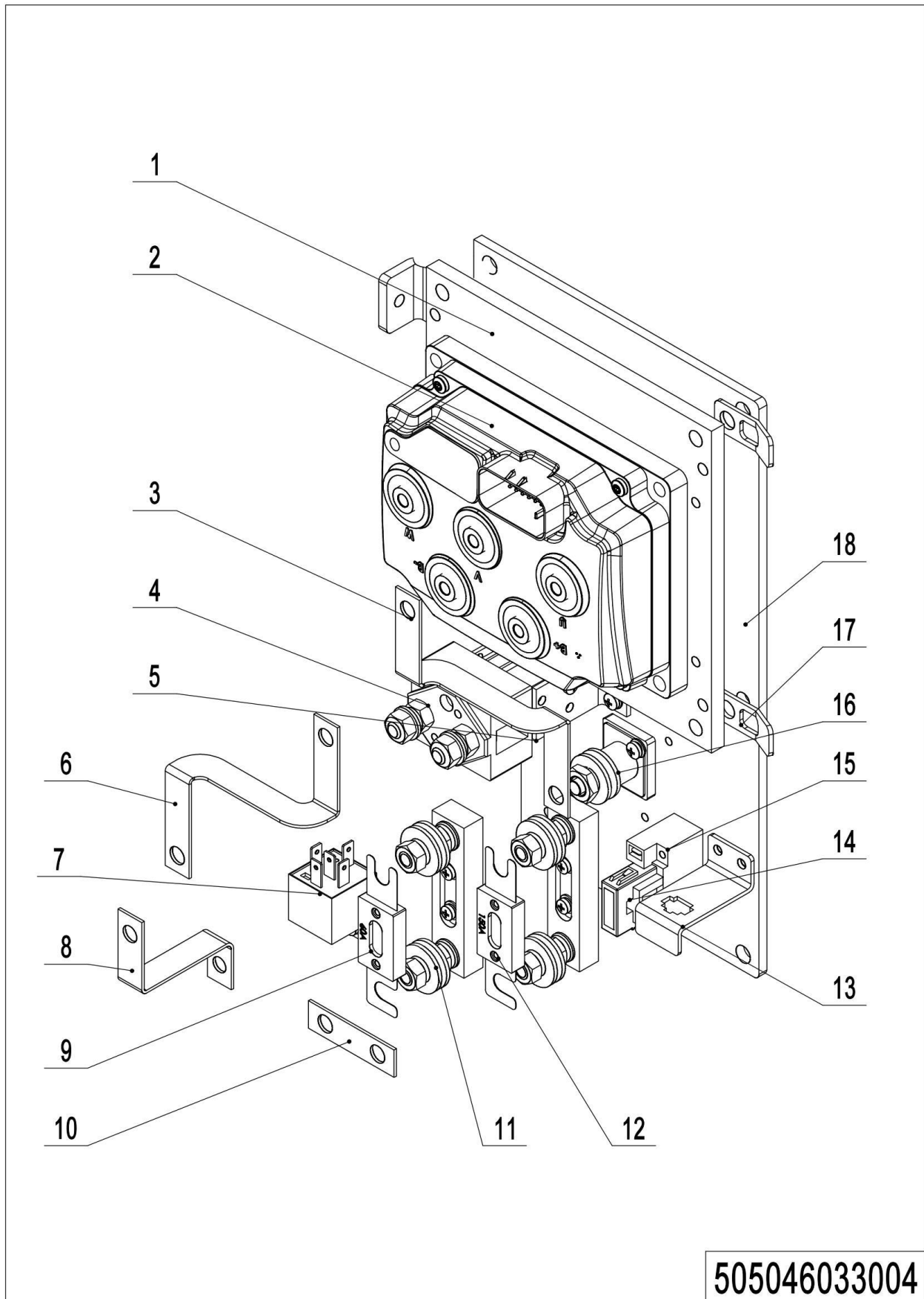
04 Wire Harness (504446033003)

1= Supply as package. 2= Supply with constraints. 3= Phasing-out supply. 4= Supply as assembly. 5= Check other tables.

04 Wire Harness (505046033003)

No.	Item Code	Mark	Item Description	Qty.	Substitute	Note
1	505033010009		Wire Harness (AC-F2A)	1		
2	504433010016		Cable-U-10-6-6-650	1		
3	504433010017		Cable-V-10-6-6-680	1		
4	504433010018		Cable-W-10-6-6-710	1		
5	505033010001		Cable-E2-16-6-8-1200	1		
6	505033010002		Cable-FP-16-6-8-1250	1		
7	505033010011		Wire Harness (F2-A+Li)	1		
8	505033010004		Cable-FU+-25-8-8-960	1		
9	920100300001		Fuse 0.5A	1		

05 Controller (505046033004)

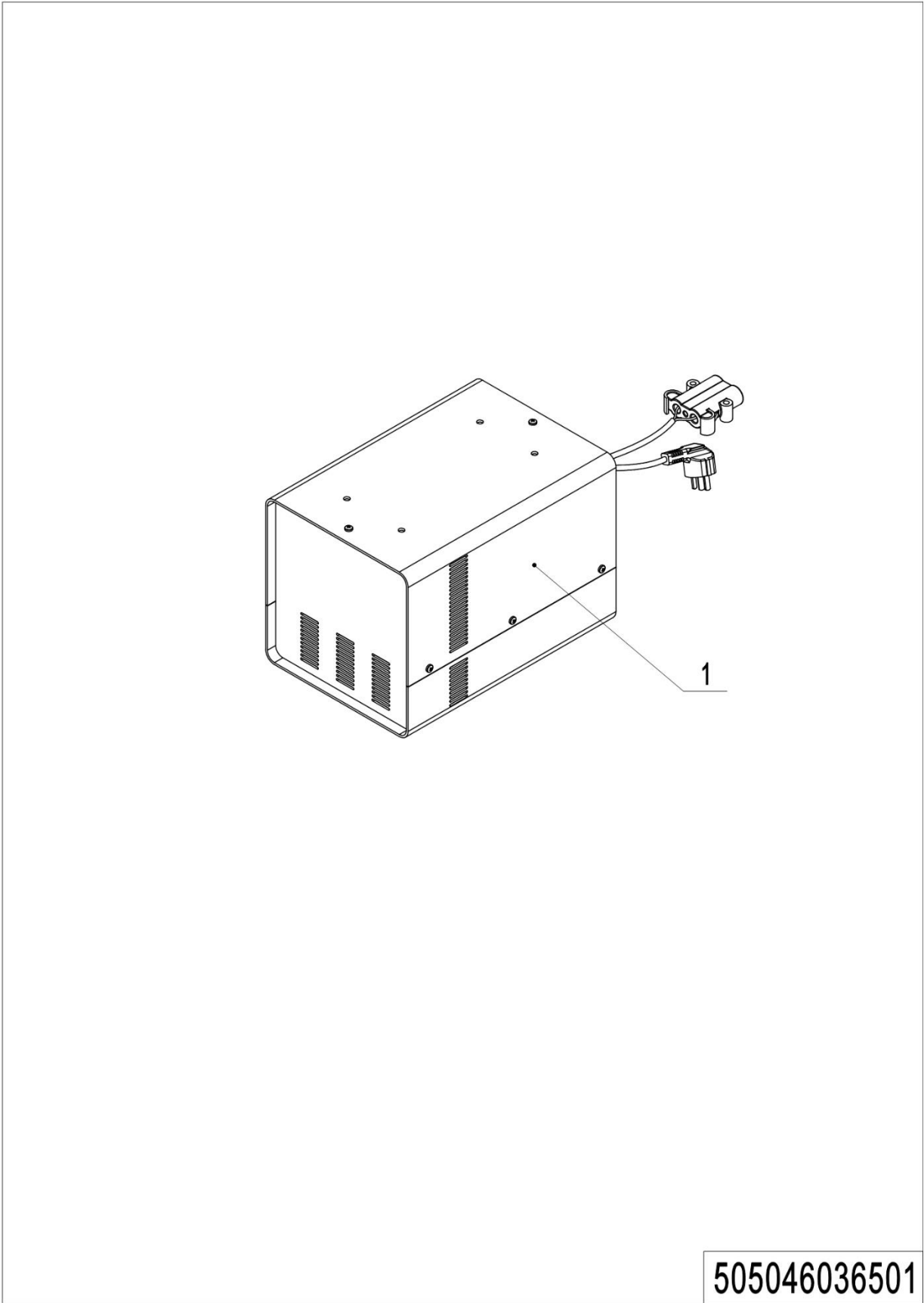


1= Supply as package. 2= Supply with constraints. 3= Phasing-out supply. 4= Supply as assembly. 5= Check other tables.

05 Controller (505046033004)

No.	Item Code	Mark	Item Description	Qty.	Substitute	Note
1	505633020004		Plate	1		
2	921400100200		Controller	1		
3	505633020007		Copper Busbar	1		
4	920700100004		Contacto	1		
5	921300400001		Holder	1		
6	504733020001		Copper Busbar			
7	920800100001		Relay	1		
8	505633020002		Copper Busbar	1		
9	920100100007		Fuse 150A	1		
10	505633020003		Copper Busbar	1		
11	920100400002		Fuse Holder	1		
12	920100100004		Fuse 80A	1		
13	921300300001		Holder	1		
14	920100400006		Fuse Holder	1		
15	920100200002		Fuse 10A	1		
16	920100400001		Fuse Holder	1		
17	921300200012		Cable fastener	1		
18	504421520025		Mounting Plate	1		

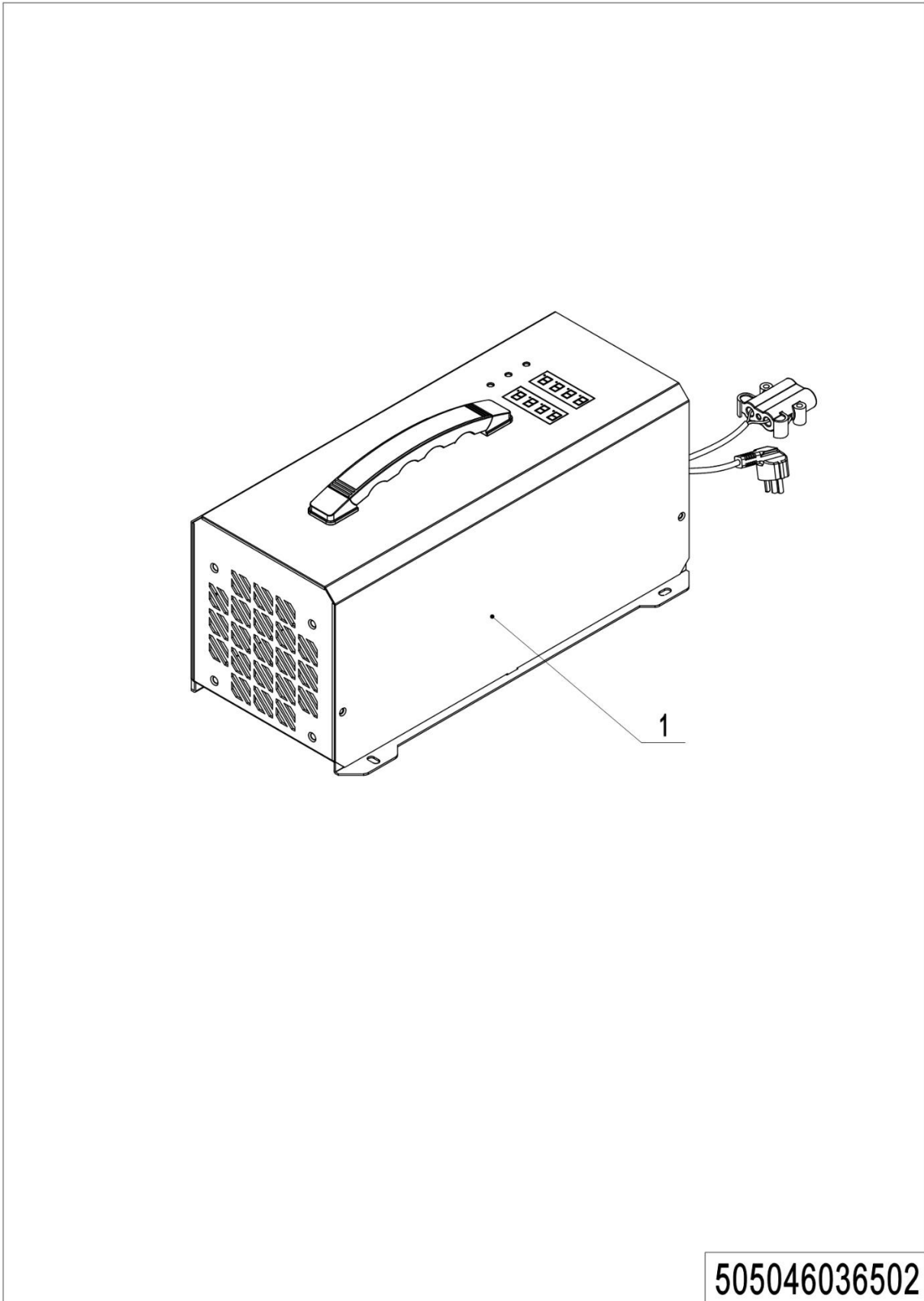
06 Charger (505046036501)



1= Supply as package. 2= Supply with constraints. 3= Phasing-out supply. 4= Supply as assembly. 5= Check other tables.

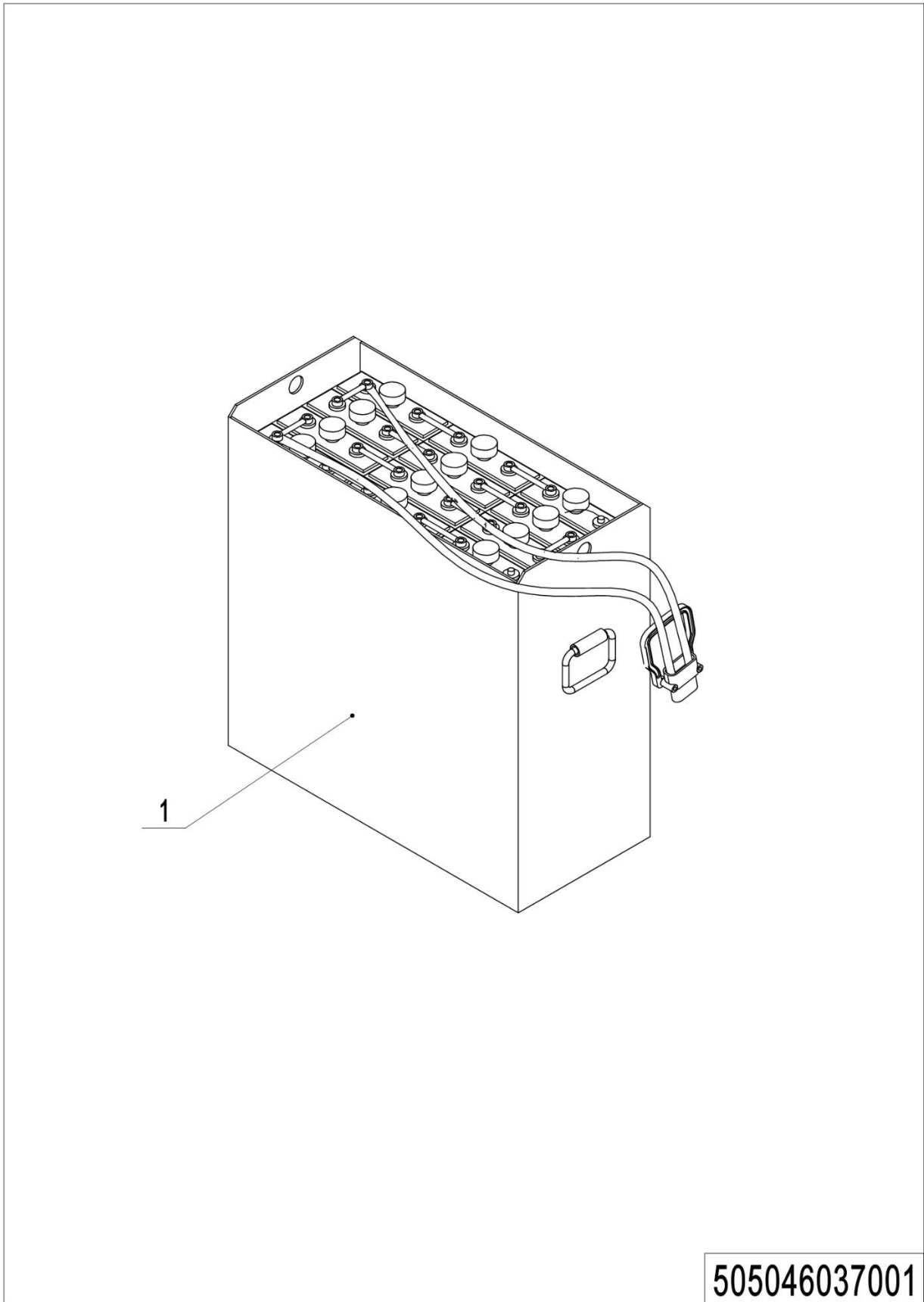
06 Charger (505046036501)

No.	Item Code	Mark	Item Description	Qty.	Substitute	Note
1	921000200019		Charger24V45A(Aisa-CHN)	1		
1	921000200020		Charger24V45A(Aisa-ENG)	1		
1	921000200021		Charger24V45A(EU)	1		
1	921000200022		Charger24V45A(AUS)	1		
1	921000200023		Charger24V45A(ENG)	1		
1	921000200024		Charger24V45A(USA)	1		
1	921000200521		Charger 24V45A(ISR)	1		
1	921000200155		Charger24V40A(Aisa-CHN)	1		
1	921000200156		Charger24V40A(Aisa-ENG)	1		

07 Charger (505046036502)

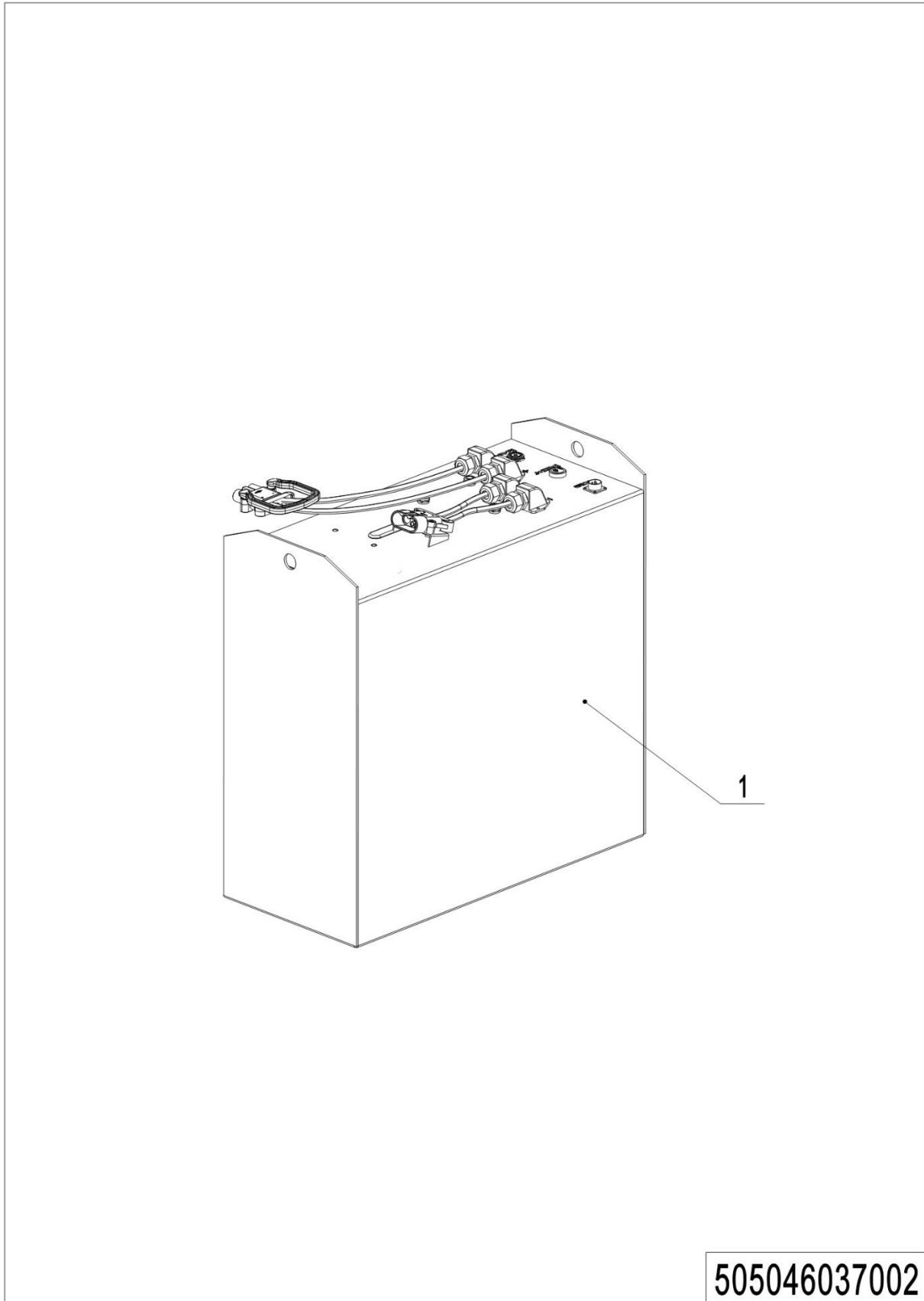
07 Charger (505046036502)

No.	Item Code	Mark	Item Description	Qty.	Substitute	Note
1	921000200524		Charger 24V60A (EU)	1		Li battery
1	921000200525		Charger 24V60A (ENG)	1		Li battery
1	921000200526		Charger 24V60A (AUS)	1		Li battery
1	921000200527		Charger 24V60A (ISR)	1		Li battery
1	921000200528		Charger 24V60A (ARG)	1		Li battery
1	921000200529		Charger 24V60A (ZA)	1		Li battery
1	921000200530		Charger 24V60A (US)	1		Li battery
1	921000200631		Charger 24V60A (TH)	1		Li battery
1	921000200690		Charger 24V60A (US- three	1		Li battery
1	921000200663		Charger 24V60A (ZA)	1		Li battery
1	921000200523		Charger 24V60A (Asia-EN)	1		Li battery
1	921000200724		Charger ADY24V60A (BRA)	1		Li battery
1	921000200723		Charger ADY24V50A (US)	1		Li battery

08 Battery (505046037001)

08 Battery (505046037001)

No.	Item Code	Mark	Item Description	Qty.	Substitute	Note
1	505037010001		Battery24V350Ah	1		
1	505037010002		Battery24V350Ah(welded)	1		
1	920600100501		Battery24V350Ah	1		EN1175
1	920600100580		Battery24V350Ah(welded)	1		EN1175

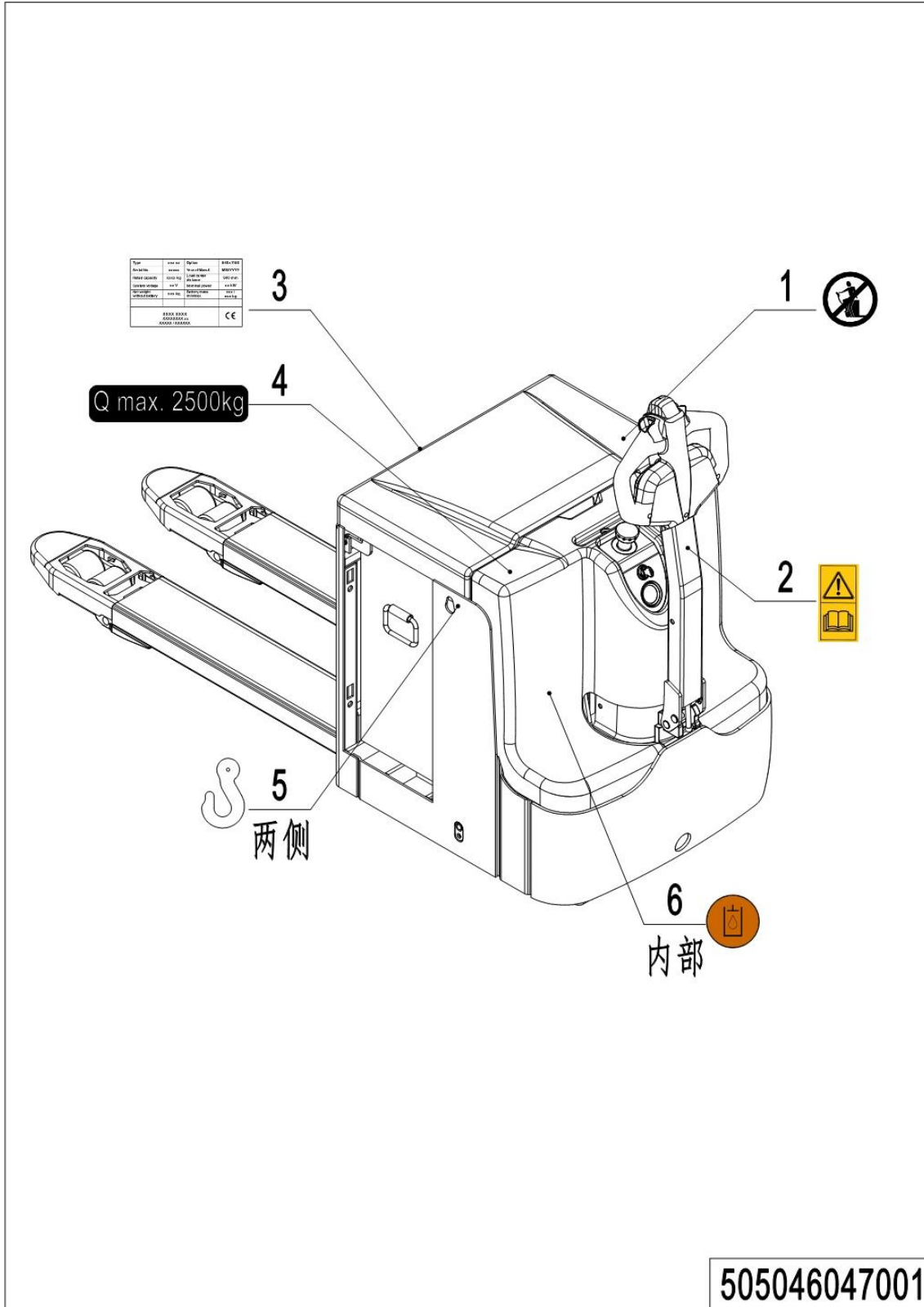
09 Battery (505046037002)

05 Battery (505046037002)

No.	Item Code	Mark	Item Description	Qty.	Substitute	Note
1	920600100334		锂电池 24V150Ah	1		
1	920600100336		锂电池 24V200Ah	1		

Chapter 6: Others

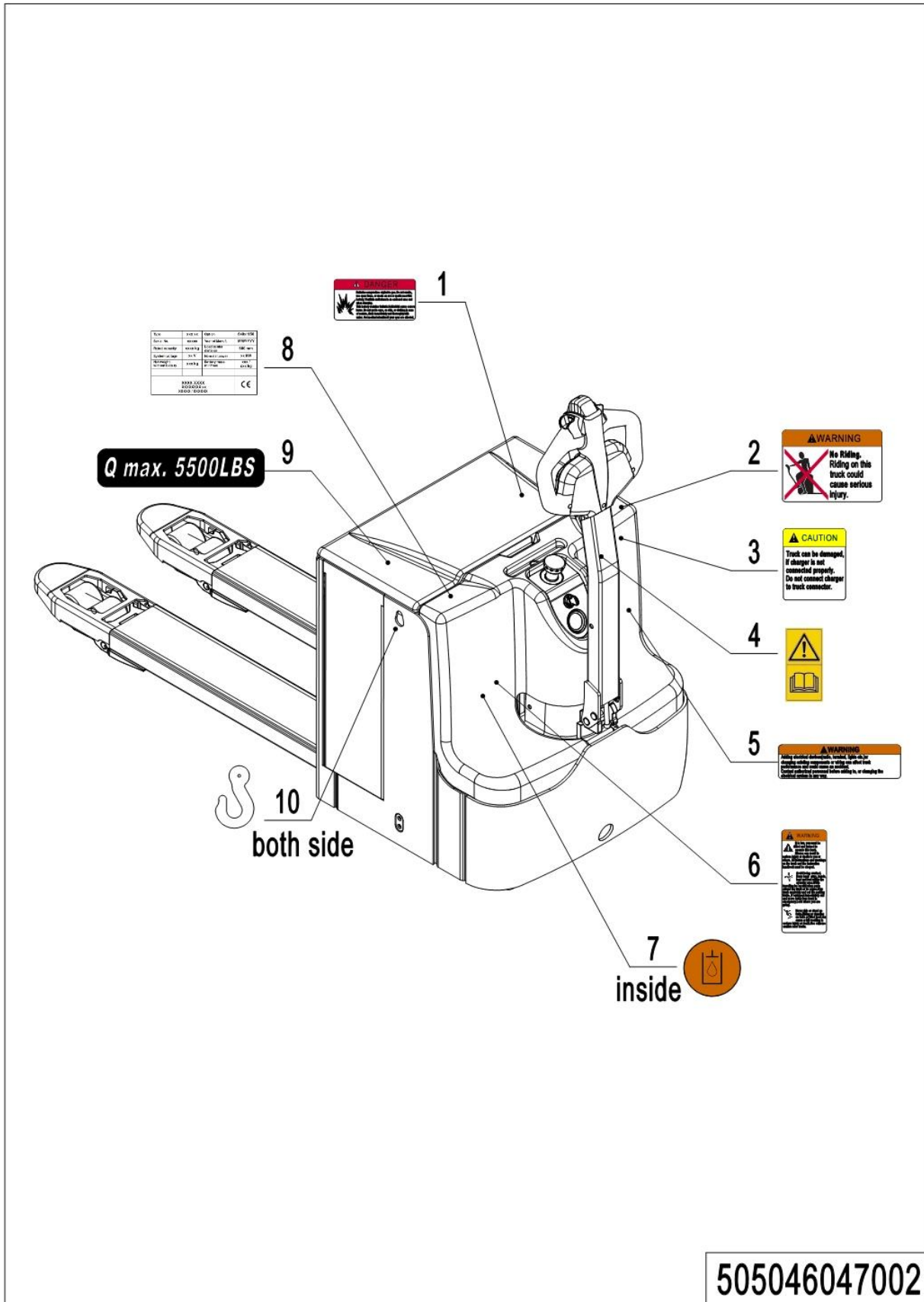
01 Labels and Decals (EU) (505046047001)



01 Labels and Decals (EU) (505046047001)

No.	Item Code	Mark	Item Description	Qty.	Substitute	Note
1	941200100003		Label	1		
2	941200300002		Label	1		
3	505047020001		Truck data plate	1		
4	941200200011		Label	1		
5	941200300001		Label	2		
6	941200300003		Label	1		

02 Labels and Decals (US) (505046047002)



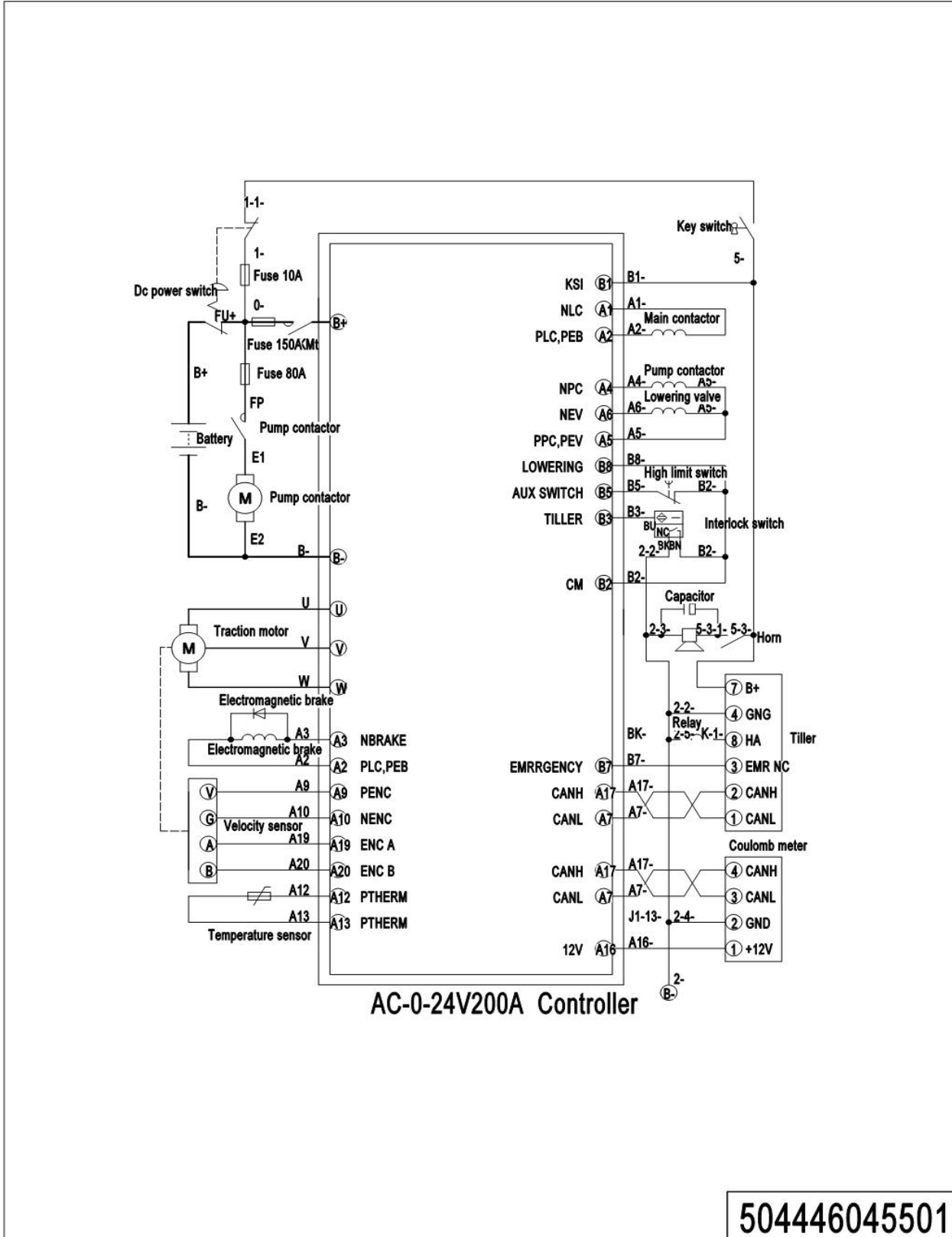
1= Supply as package. 2= Supply with constraints. 3= Phasing-out supply. 4= Supply as assembly. 5= Check other tables.

02 Labels and Decals (US) (505046047002)

No.	Item Code	Mark	Item Description	Qty.	Substitute	Note
1	941200100013		Label	1		
2	941200100011		Label	1		
3	941200100012		Label	1		
4	941200300002		Label	1		
5	941200100010		Label	1		
6	941200100009		Label	1		
7	941200300003		Label	1		
8	505047020002		Truck data plate	1		
9	941200200039		Label	1		
10	941200300001		Label	2		

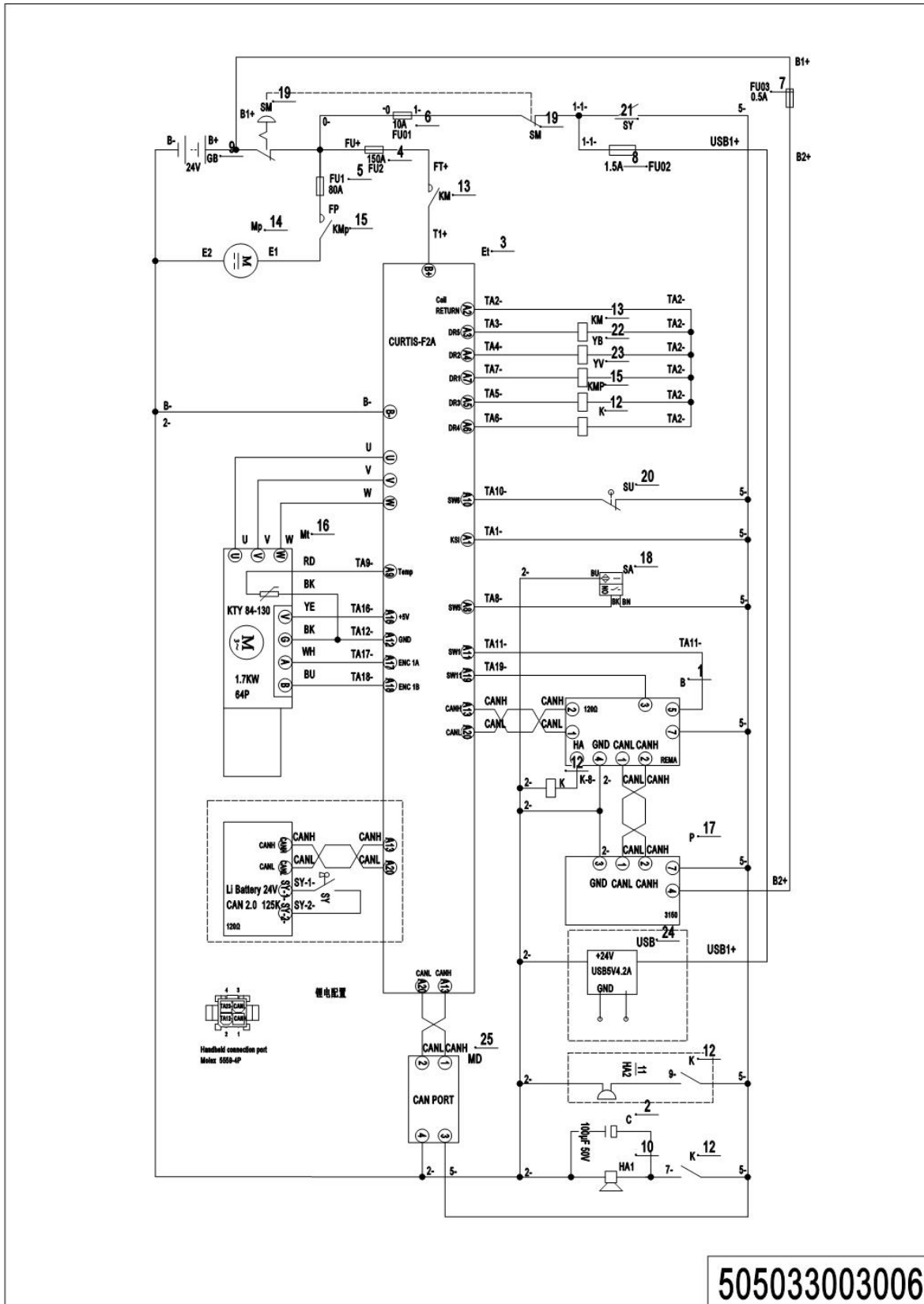
Appendix

01 Electrical Circuit Diagram (504446045501)



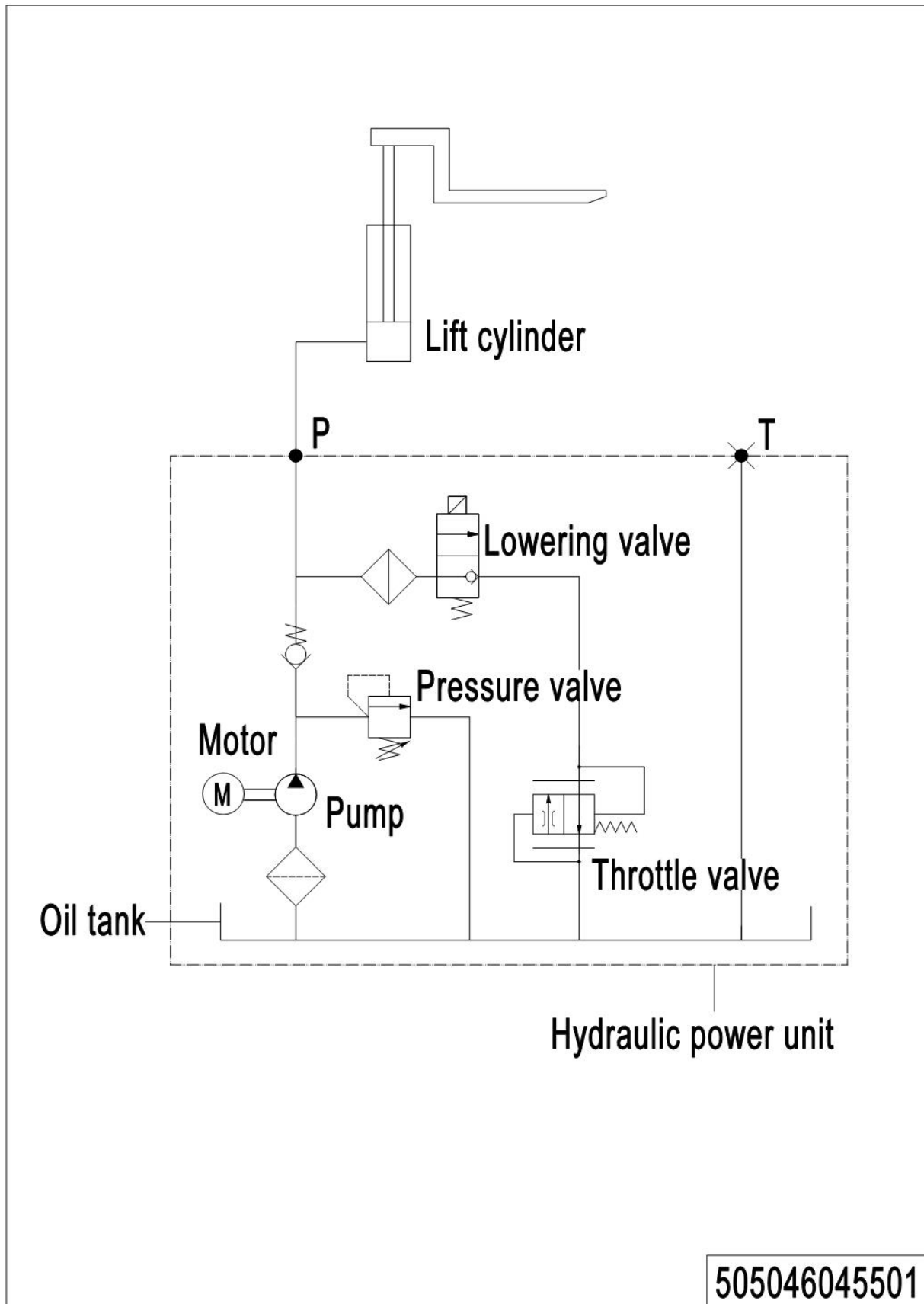
1= Supply as package. 2= Supply with constraints. 3= Phasing-out supply. 4= Supply as assembly. 5= Check other tables.

02 Electrical Circuit Diagram (505033003006)



1= Supply as package. 2= Supply with constraints. 3= Phasing-out supply. 4= Supply as assembly. 5= Check other tables.

03 Hydraulic Circuit Diagram (505046045501)



04 Consumable Parts List

No.	Item Code	Item Description	Qty.	Chapter/ Section/ Number
1	940500100019	Bushing	2	Chapter2/01/2 Chapter3/02/6
1	940500100019	Bushing		Chapter4/03/10.02Chapter4/05/17.01
2	505098510005	Seal Kit	1	Chapter2/01/11.01
3	940500100027	Bushing	2	Chapter3/02/5
4	940500100032	Bushing	2	Chapter3/02/7
5	940500100012	Bushing	2	Chapter3/02/11.02Chapter4/03/4
5	940500100012	Bushing		Chapter4/04/4
6	910700200017	Bearing	12	Chapter3/02/25.02
7	911200100001	Oil Cup	2	Chapter4/03/3Chapter4/04/3
8	940500200003	Bushing	2	Chapter4/03/6
9	910700200019	Bearing	4	Chapter4/04/6.02
10	910700500002	Bearing	1	Chapter4/05/6
11	940500100002	Bushing	2	Chapter4/05/15
12	920100200002	Fuse	1	Chapter5/03/6
13	920100100007	Fuse	1	Chapter5/03/8