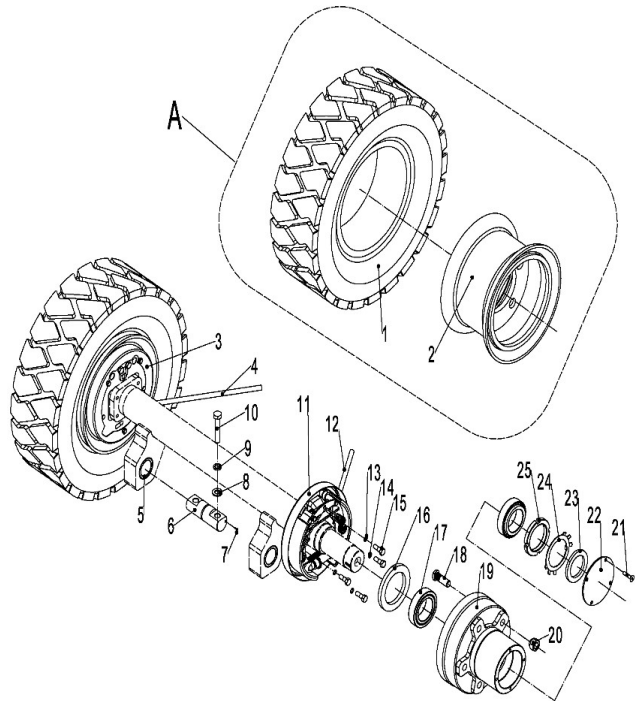
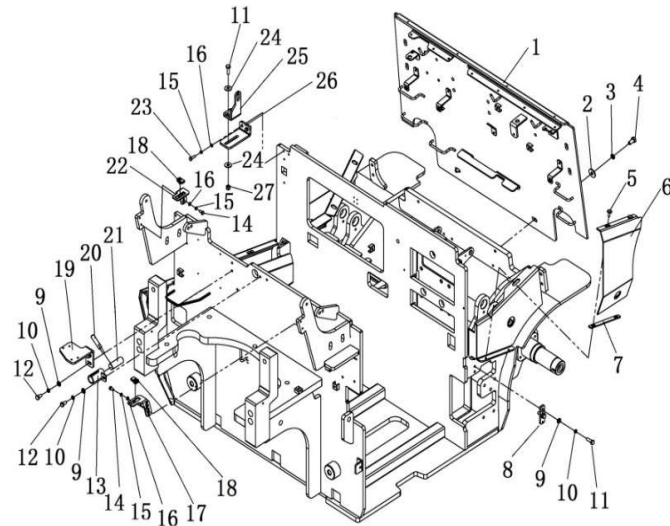


275398501001前轮装配/Front wheel assembly



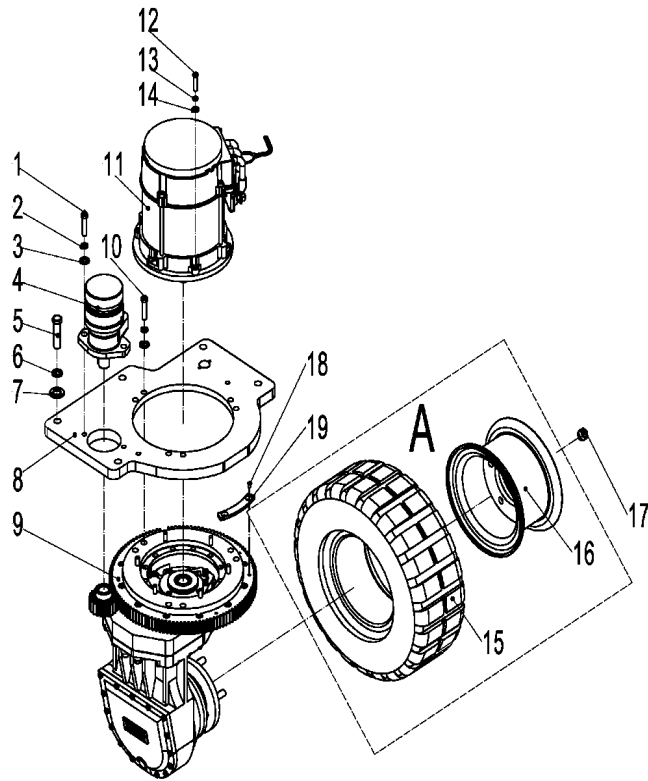
序号/NO	编码/SN	Name	名称	数量/QTY	备注/Remark
A	275313010001	Tyre assembly 18x7-8 (solid)	轮胎总成18X7-8(实心)	2	
A	275313010002	Tire Assembly 18x7-8 (Environmental)	轮胎总成18X7-8(环保)	2	选装
1	281213013001	Tyre 18x7-8 (solid)	轮胎18x7-8(实心)	2	
1	281213014001	Tire 18x7-8 (Environmental)	轮胎18x7-8(环保)	2	选装
2	275313011001	Rim Assembly 4.33R-8	轮辋总成4.33R-8	2	
3	275313511013	Left brake assembly	左制动器总成	1	
4	275313511015	Brake cable left	左制动拉索	1	
5	275313521030	Wear-resisting $\Phi 45 \times \Phi 35 \times 40$	耐磨套 $\Phi 45 \times \Phi 35 \times 40$	2	
6	275344520002	Mast pin	门架销轴	2	
7	911200100002	Grease cup JB7940.1-M6x1	油杯JB7940.1-M6x1	2	
8	910400500008	Spring washer GB93-12	弹簧垫圈GB93-12	4	
9	910400100008	Washer GB97.1-12-200HV	平垫圈GB97.1-12-200HV	4	
10	910100300056	Bolt GB5783-M12x60-8.8	螺栓GB5783-M12x60-8.8	4	
11	275313511014	Right brake assembly	右制动器总成	1	
12	275313511016	Right brake cable	右制动拉索	1	
13	275313521006	Washer $\Phi 17 \times 11 \times 5$	垫圈 $\Phi 17 \times 11 \times 5$	2	
14	910400500006	Spring washer GB93-8	弹簧垫圈GB93-8	6	
15	275313521029	Brake fixing bolt	制动器固定螺栓	8	
16	910800700009	Oil Seal GB9877-FB60x80x8	骨架油封GB9877-FB60x80x8	2	
17	910700600037	Bearing GB297-33010	轴承GB297-33010	4	
18	254198526071	Hub nut	轮毂螺母	12	
19	275313521011	Hub	轮毂	12	
20	275313521010	Hub bolt	轮毂螺栓	2	
21	275313521005	Wheel hub cover plate	轮毂盖板	2	
22	941100100009	Screw M6x12-8.8	螺钉M6x12-8.8	12	
23	910300700007	Nut GB810-M48x1.5	螺母GB810-M48x1.5	2	
24	910400900017	Lock washer GB858-48	止动垫圈GB858-48	2	
25	275313521004	Nut retainer	螺母挡圈	2	

275398501002车架装配/Frame assembly



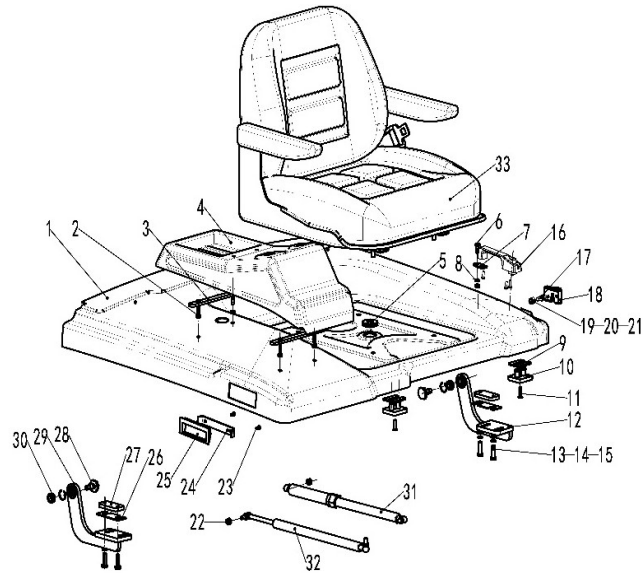
序号/NO	编码/SN	Name	名称	数量/QTY	备注/Remark
1	275321511009	Instrument rack welding	仪表架焊合	1	
2	910400200004	Large washer GB96.1-10-200HV	大垫圈GB96.1-10-200HV	2	
3	910400500007	Spring washer GB93-10	弹簧垫圈GB93-10	2	
4	910100300035	Bolt GB5783-M10x20-8.8	螺栓GB5783-M10x20-8.8	2	
5	910200300018	Screw GB70.2-M6x16-8.8	螺钉GB70.2-M6x16-8.8	2	
6	275321511005	Welding of outer plate (lower right)	外侧板焊合(右下)	1	
7	281221521091	Pad (side plate)	垫板(侧板)	1	
8	281221521039	Side door limit vertical plate	侧门限位竖板	1	
9	910400100006	Flat washer GB97.1-8-200HV	平垫圈GB97.1-8-200HV	5	
10	910400500006	Spring washer GB93-8	弹簧垫圈GB93-8	5	
11	910100300023	Bolt GB5783-M8x25-8.8	螺栓GB5783-M8x25-8.8	4	
12	910100300020	Bolt GB5783-M8x16-8.8	螺栓GB5783-M8x16-8.8	3	
13	281221511011	Stem seat welding	阀杆座焊合	1	
14	910100300009	Bolt GB5783-M6x12-8.8	螺栓GB5783-M6x12-8.8	4	
15	910400500005	Spring washer GB93-6	弹簧垫圈GB93-6	6	
16	910400100005	Flat washer GB97.1-6-200HV	平垫圈GB97.1-6-200HV	6	
17	275221521082	Bracket (upper cover right)	支架(上盖板右)	1	
18	940400400002	M8 card nut	簧片螺母M8	2	
19	275221521081	Mounting board (connector)	安装板(接插件)	1	
20	255021520100	Dial rod	拨杆	1	
21	255021520099	Insurance pin	保险销	1	
22	275221521083	Bracket (upper cover left)	支架(上盖板左)	1	
23	910100300011	Bolt GB5783-M6x20-8.8	螺栓GB5783-M6x20-8.8	2	
24	910400200003	Large washer GB96.1-8-200HV	大垫圈GB96.1-8-200HV	4	
25	275321521087	Locking tongue fixing plate	锁舌固定板	1	
26	275321521045	Latch transition bracket	锁舌过渡支架	1	
27	910300500004	Nut GB889.1-M8-10	螺母GB889.1-M8-10	2	

275398501004驱动转向系统 /Drive steering system



序号/NO	编码/SN	Name	名称	数量/QTY	备注/Remark
1	910200200100	Screw GB70.1-M12x40-8.8	螺钉GB70.1-M12x40-8.8	2	
2	910400500008	Spring washer GB93-12	弹簧垫圈GB93-12	8	
3	910400100008	Flat washer GB97.1-12-200HV	平垫圈GB97.1-12-200HV	8	
4	275214010003	Cycloidal motor	摆线马达	1	
5	910100100071	Bolt GB5782-M16x55-8.8	螺栓GB5782-M16x55-8.8	5	
6	910400500010	Spring washer GB93-16	弹簧垫圈GB93-16	5	
7	910400100010	Flat washer GB97.1-16-200HV	平垫圈GB97.1-16-200HV	5	
8	275214010002	Gearbox mounting board welding	变速箱安装板焊合	1	
9	275214010001	Gearbox (South Central)	变速箱(中南)	1	
	275214010005	Gearbox [Xinchang Hawk]	变速箱 (新昌华鹰)	1	
10	910100300056	Bolt GB5783-M12x60-8.8	螺栓GB5783-M12x60-8.8	6	
11	920900100064	Motor (AC YDQ5-4-9200)	电机(交流)YDQ5-4-9200	1	选装/optional
	255098513201	Encoder (KDS)	编码器(KDS)	1	选装/optional
	920900100061	Motor (AC) JXQ-5-N	电机(交流)JXQ-5-N	1	选装/optional
	271532511001	Encoder	编码器(皖南插入式)	1	选装/optional
12	910100300023	Bolt GB5783-M8x25-8.8	螺栓GB5783-M8x25-8.8	6	
13	910400500006	Spring washer GB93-8	弹簧垫圈GB93-8	6	
14	910400100006	Flat washer GB97.1-8-200HV	平垫圈GB97.1-8-200HV	6	
A	275215510001	Rear wheel assembly 18X7-8 (solid)	后轮总成18X7-8(实心朝阳)	2	STD.
	275215510002	Rear wheel assembly 18X7-8 (envir)	后轮总成18X7-8(环保朝阳)	2	选装/optional
15	255015510002	Tire 18x7-8 (solid sunrise)	轮胎18x7-8(实心朝阳)	2	STD.
	255015510006	Tire 18x7-8 (environmentally)	轮胎18x7-8(环保朝阳)	2	选装/optional
16	275215511001	Rims Assembly 4.33R-8	轮辋总成4.33R-8	2	
17	275015520005	Nut M14x1.5	螺母M14x1.5	10	
18	910200600023	Screw GB819.1-M6x12-4.8	螺钉GB819.1-M6x12-4.8	2	
19	275214021002	Limit plate	限位板	1	
20	275214021002	Limit plate	限位板	1	

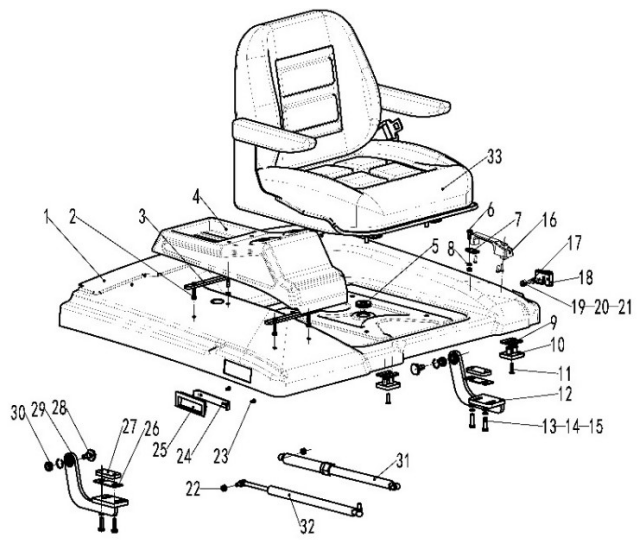
275398501006电瓶箱盖/Battery box cover



序号/NO	编码/SN	Name	名称	数量/QTY	备注/Remark
1	275321011002	Battery box cover welding	电瓶箱盖焊合	1	
2	910300100005	Nut GB6170-M6-10	螺母GB6170-M6-10	8	
3	275221011016	Pressure plate welding	压板焊合	2	
4	275221021003	Decorative cover	装饰盖	1	
5	255021020046	Protective ring Φ 35	保护圈Φ35	1	
6	910200500053	Screw GB818-M6x20-4.8	螺钉GB818-M6x20-4.8	2	
7	275321021023	Fixed plate	把手固定板	1	
8	910400500005	Spring washer GB93-6	弹簧垫圈GB93-6	4	
9	255021020071	Buffer pad	缓冲垫	2	
10	255021020068	Buffer pad	缓冲垫	2	
11	910200400019	Hexagon countersunk head screw GB70.3-M6x25-8.8	内六角沉头螺钉GB70.3-M6x25-8.8	2	
12	275221011005	Hinge welding (left)	铰链焊合(左)	1	
13	910100300024	Bolt GB5783-M8x30-8.8	螺栓GB5783-M8x30-8.8	4	
14	910400500006	Spring washer GB93-8	弹簧垫圈GB93-8	10	
15	910400100006	Flat washer GB97.1-8-200HV	平垫圈GB97.1-8-200HV	10	
16	275321011020	Handle	502门锁把手	1	
17	275321011031	Tongue locking	502-6锁舌	1	
18	255021020052	Roof lock	502右门锁体	1	
19	910400500008	Spring washer GB93-12	弹簧垫圈GB93-12	1	
20	910400100008	Flat washer GB97.1-12-200HV	平垫圈GB97.1-12-200HV	1	
21	910300100008	Nut GB6170-M12-10	螺母GB6170-M12-10	1	
22	910300100006	Nut GB6170-M8-10	螺母GB6170-M8-10	2	
23	910200500021	Screw GB818-M4x10-4.8	螺钉GB818-M4x10-4.8	2	
24	255021020055	Fixed plate	固定板	1	
25	255021020021	Handle (inside)	拉手(内)	1	
26	255021020054	Adjusting pad	调整垫	2	
27	255021020045	Seat plate	座板	2	
28	255021020043	Fixing bolt	固定螺栓	2	
29	275221011006	Hinge welding (right)	铰链焊合(右)	1	
30	255021010014	Joint bearing GE12E	关节轴承GE12E	2	
31	940400100053	Air spring 750N (D620) - self locking	气弹簧750N(D620)-自锁	1	

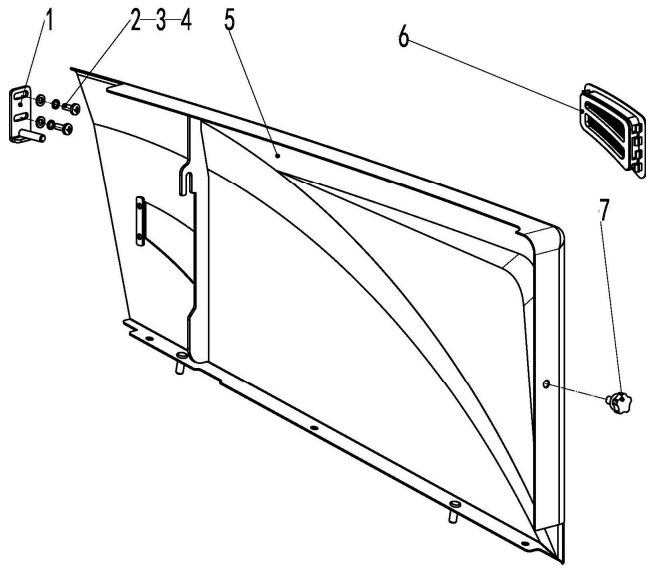
275398501006电瓶箱盖/Battery box cover

序号/NO	编码/SN	Name	名称	数量/QTY	备注/Remark
31	940400100031	Air spring 500N (D620) - self locking	气弹簧500N(D620)-自锁	1	选装/optional
32	940400100030	Gas spring 200N (D620)	气弹簧200N(D620)	1	选装/optional
33	255037510001	Seat (STD.)	座椅(标配)	1	
	255037510003	Seat (comfortable)	座椅(舒适型)	1	
	255037510004	Seat (Vibration)	座椅(减振型)	1	
	255037510006	Seat BF7 (Vibration)	座椅(奔丰BF7-ABCDEF)	1	



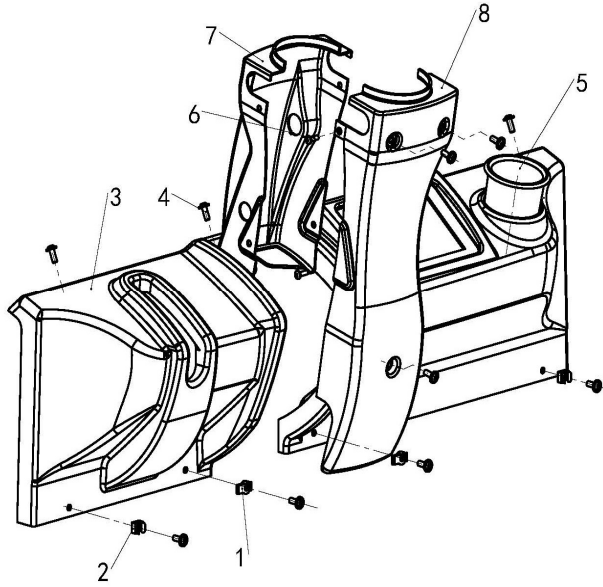
275398501008左侧板/Left plate

序号/NO	编码/SN	Name	名称	数量/QTY	备注/Remark
1	255021010015	Hook welding (left)	挂钩焊接(左)	1	
2	910400100005	Flat washer GB97.1-6-200HV	平垫圈GB97.1-6-200HV	2	
3	910400500005	Spring washer GB93-6	弹簧垫圈GB93-6	2	
4	910200500052	Screw GB818-M6x16-4.8	螺钉GB818-M6x16-4.8	2	
5	275321011003	Side plate welding (left)	侧板焊接(左)	1	
6	505621510004	Vent (right)	通风孔(右)	1	
7	255021020060	Knob bolt	旋钮螺栓	1	

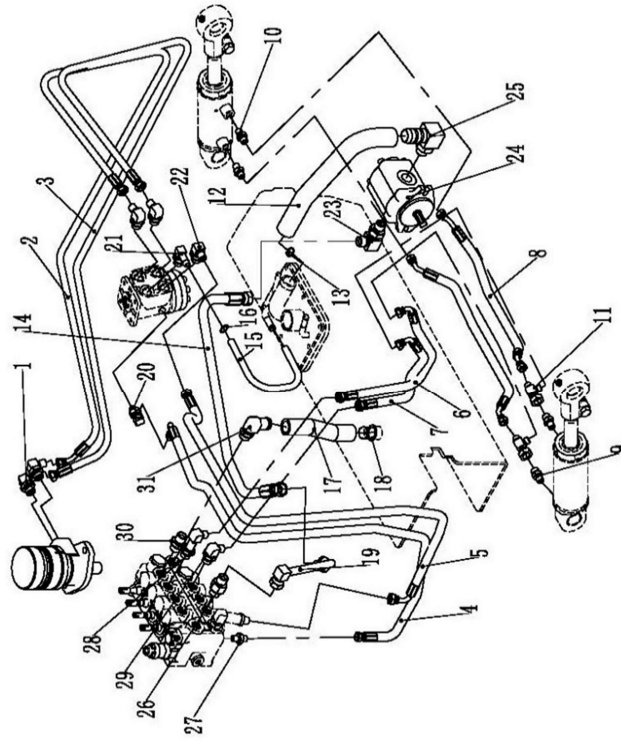


275398501010控制面板/Control panel

序号/NO	编码/SN	Name	名称	数量/QTY	备注/Remark
1	255010020009	Spring nut M6	簧片螺母M6	10	
2	255021020058	M6 nut	M6卡式螺母	2	
3	275310021001	Shield (Curtis)	上护罩(Curtis)	1	选装/optional
4	941100100009	Bolt M6x12-8.8	螺钉M6x12-8.8	19	
5	256810021004	Cover	制动液杯盖	1	
6	910200500040	Nut GB818-M5x16-4.8	螺钉GB818-M5x16-4.8	2	
7	255010020005	Front cover	前盖	1	
8	255010020006	Rear cover	后盖	1	



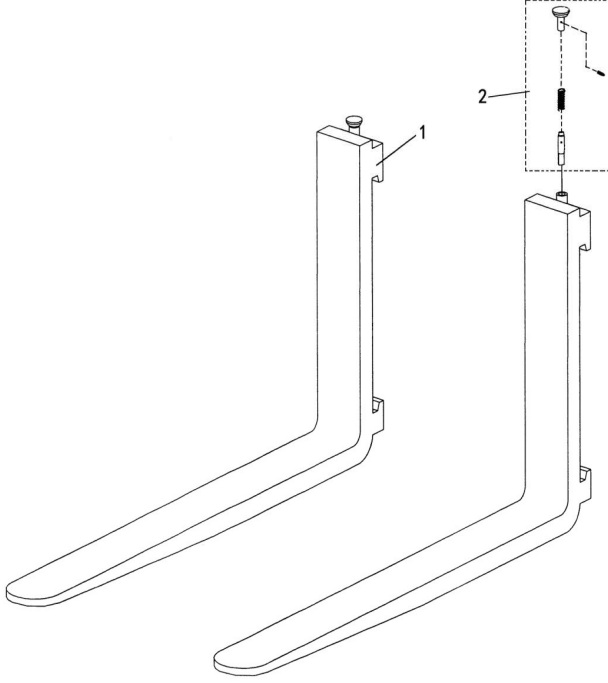
275398501021 液压系统/hydraulic system



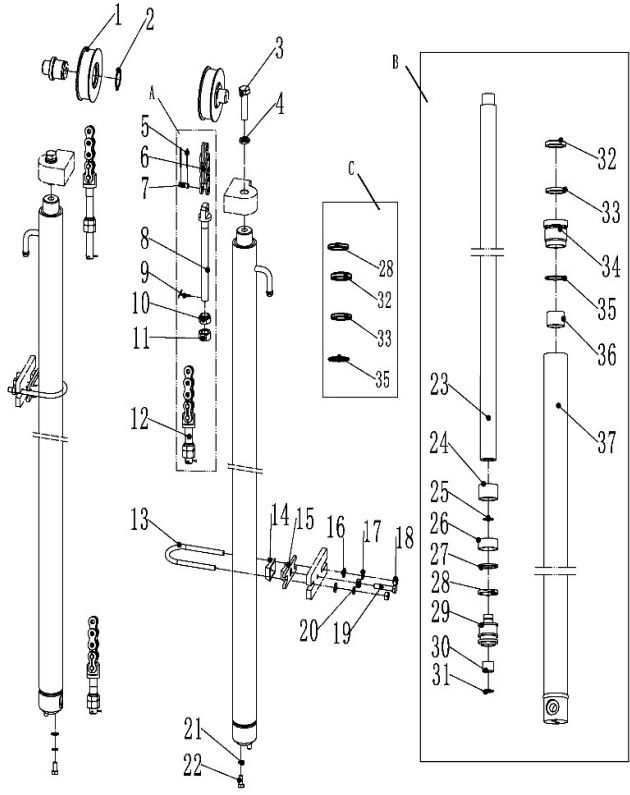
序号/NO	编码/SN	Name	名称	数量/QTY	备注/Remark
1	275223511001	Connector (locking bend) 8-G1/2-M	接头(锁定弯)8-G1/2-M16x1.5-60°	2	
2	275323521006	Hydraulic pipe assembly (45°)8-L20	液压管总成(45°)8-L2040-1SC-60°	1	
3	275323521007	Hydraulic pipe Assembly (straight)8-	液压管总成(直)8-L2040-1SC-60°	1	
4	275323521004	Hydraulic Pipe Assembly (90°)6-L11	液压管总成(90°)6-L1180-1SC-60°	1	
5	275323521005	Hydraulic pipe assembly (90°)8-L11	液压管总成(90°)8-L1100-1SC-60°	1	
6	252123520005	Hydraulic Pipe Assembly (90°)6-L45	液压管总成(90°)6-L450-1SC-60°	1	
7	255023520016	Hydraulic Pipe Assembly (90°)6-L34	液压管总成(90°)6-L340-1SC-60°	1	
8	275323521001	Hydraulic pipe assembly (ex)6-L550	液压管总成(异)6-L550-1SC-60°	2	
9	255023520019	Connector (straight)8-G1/4- M16X1.	接头(直)8-G1/4-M16x1.5-60°	2	
10	255023520007	Connector (straight)6-G1/4- M14X1.	接头(直)6-G1/4-M14x1.5-60°	2	
11	255023510012	Connector (tee) 7-2XM14X1.5-M16X	接头(三通)7-2xM14x1.5-M16x1.5-6	2	
12	275223521001	Hose (oil suction)	胶管(吸油)	1	
13	911000600006	Hose hoops QC/T390 - (40-45)	喉箍QC/T390(40-45)	2	
14	256523520005	Hydraulic Pipe Assembly (90°)13-L7	液压管总成(90°)13-L720-2SC-60°	1	
15	900200401001	Oil return hose 23x5	回油胶管23x5	2000	
16	911000600003	Hose hoops QC/T390 - (22-26),	喉箍QC/T390(22-26)	2	
17	900200401003	Oil return hose 35x5	回油胶管35x5	240	
18	911000600004	Hose hoops QC/T390 - - 38 (34)	喉箍QC/T390(34-38)	2	
19	275323511002	Multi-way valve inlet pipe welding	多路阀进油钢管焊合	1	
20	255023510003	Connector (locking bend)6-G1/4- M	接头(锁定弯)6-G1/4-M14x1.5-60°	1	
21	255023510008	Connector (lock bend) 11-M20X1.5-	接头(锁定弯)11-M20x1.5-0	1	
22	255023510007	Connector (locking bend) 10-M20X1	接头(锁定弯)10-M20x1.5-M16x1.5-	4	
23	255044020151	Connector (locking bend) 12-2XM22	接头(锁定弯)12-2xM22x1.5-60°	1	
24	275223511006	Gear pump (right)	齿轮泵(右旋)	1	
25	253523520015	Connector (lock bend) 16-M24X1.5-	接头(锁定弯)16-M24x1.5-0	1	
26	255023520030	Connector (straight) 12-2XM22X1.5	接头(直)12-2xM22x1.5-60°	2	
27	281223521007	Connector (straight) 6-M12X1.5-M14	接头(直)6-M12x1.5-M14x1.5-60°	1	
28	271523520007	Connector (locking bend) 10-M20X1	接头(锁定弯)10-M20x1.5-M14x1.5-	1	
29	271523520008	Connector (locking bend) 10-M20X1	接头(锁定弯)10-M20x1.5-M14x1.5-	1	
30	255044020122	Connector (straight) 12-M20X1.5-M	接头(直)12-M20x1.5-M22x1.5-60°	1	
31	255023510002	Joint (steering bend) 16-M22X1.5 -	接头(转向弯)16-M22x1.5-Φ25	1	

275398501023货叉/Fork

序号/NO	编码/SN	Name	名称	数量/QTY	备注/Remark
A	940100100001	Hook Type II A forks 100 x 35 x 92	挂钩II A型货叉100x35x920	2	包含/Inc.1-2
	940100100002	Hook type II A forks 100x35x950	挂钩II A型货叉100x35x950	2	包含/Inc.1-2
	940100100003	Hook Type II A forks 100 x 35 x 1070	挂钩II A型货叉100x35x1070	2	包含/Inc.1-2
	940100100004	Hook Type II A forks 100 x 35 x 1150	挂钩II A型货叉100x35x1150	2	包含/Inc.1-2
	940100100005	Hook Type II A forks 100 x 35 x 1220	挂钩II A型货叉100x35x1220	2	包含/Inc.1-2
	940100100006	Hook Type II A forks 100 x 35 x 1370	挂钩II A型货叉100x35x1370	2	包含/Inc.1-2
	940100100007	Hook Type II A forks 100 x 35 x 1520	挂钩II A型货叉100x35x1520	2	包含/Inc.1-2
1	▲	Fork body	货叉体	2	
2	253098514101	Raising and selling assembly	提销总成	2	

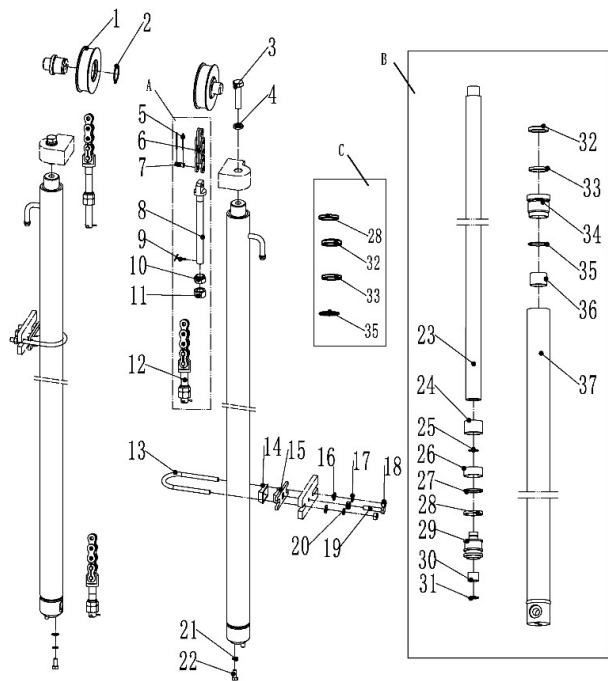


275398501027起升油缸 (标准门架)/Lifting tank (standard mast)



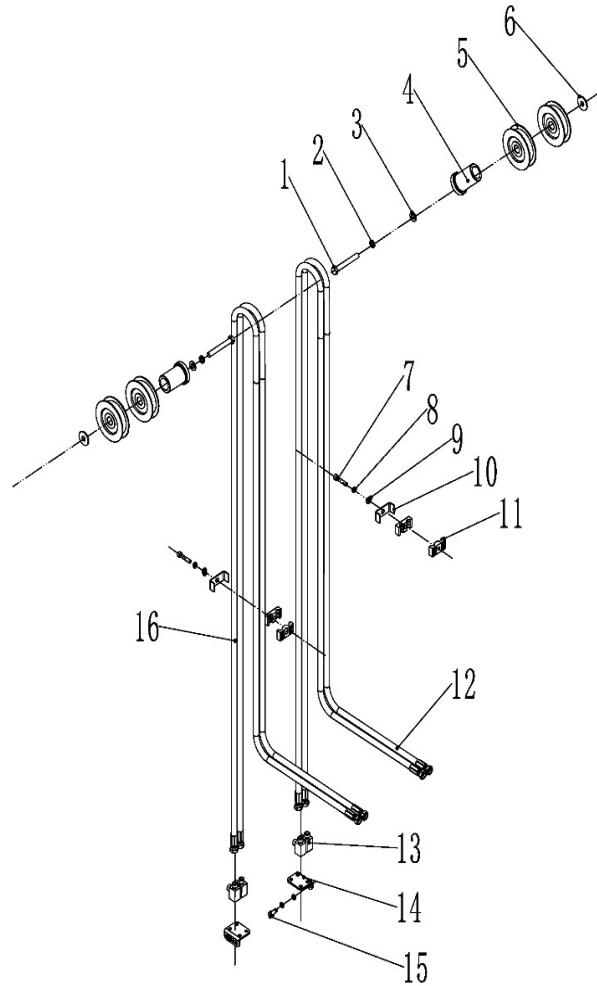
序号/NO	编码/SN	Name	名称	数量/QTY	备注/Remark
A	272544014002	Lifting chain LH1044-109	起升链条LH1044-109	2	H=2500
	275344014001	Lifting chain LH1044-113	起升链条LH1044-113	2	H=2700
	275344014002	Lifting chain LH1044-119	起升链条LH1044-119	2	H=3000
	272544014005	Lifting chain LH1044-125	起升链条LH1044-125	2	H=3300
	275344014003	Lifting chain LH1044-129	起升链条LH1044-129	2	H=3500
	275344014004	Lifting chain LH1044-133	起升链条LH1044-133	2	H=3700
	275344014005	Lifting chain LH1044-141	起升链条LH1044-141	2	H=4000
	272544014009	Lifting chain LH1044-147	起升链条LH1044-147	2	H=4300
	275344014006	Lifting chain LH1044-151	起升链条LH1044-151	2	H=4500
	275344014007	Lifting chain LH1044-161	起升链条LH1044-161	2	H=5000
	B	275344016001	Cylinder(H=2500)	油缸(L)Φ32xΦ40x1245	2
275344016002		Cylinder(H=2700)	油缸(L)Φ32xΦ40x1345	2	H=2700
275344016003		Cylinder(H=3000)	油缸(L)Φ32xΦ40x1495	2	H=3000
275344016004		Cylinder(H=3300)	油缸(L)Φ32xΦ40x1645	2	H=3300
275344016005		Cylinder(H=3500)	油缸(L)Φ32xΦ40x1745	2	H=3500
275344016006		Cylinder(H=3700)	油缸(L)Φ32xΦ40x1845	2	H=3700
275344016007		Cylinder(H=4000)	油缸(L)Φ32xΦ40x1995	2	H=4000
275344016008		Cylinder(H=4300)	油缸(L)Φ32xΦ40x2145	2	H=4300
275344016009		Cylinder(H=4500)	油缸(L)Φ32xΦ40x2245	2	H=4500
275344016010		Cylinder(H=5000)	油缸(L)Φ32xΦ40x2495	2	H=5000
275344017001		Cylinder(H=2500)	油缸(R)Φ32xΦ40x1245	2	H=2500
275344017002		Cylinder(H=2700)	油缸(R)Φ32xΦ40x1345	2	H=2700
275344017003		Cylinder(H=3000)	油缸(R)Φ32xΦ40x1495	2	H=3000
275344017004		Cylinder(H=3300)	油缸(R)Φ32xΦ40x1645	2	H=3300
275344017005		Cylinder(H=3500)	油缸(R)Φ32xΦ40x1745	2	H=3500
275344017006		Cylinder(H=3700)	油缸(R)Φ32xΦ40x1845	2	H=3700
275344017007		Cylinder(H=4000)	油缸(R)Φ32xΦ40x1995	2	H=4000
275344017008		Cylinder(H=4300)	油缸(R)Φ32xΦ40x2145	2	H=4300
275344017009		Cylinder(H=4500)	油缸(R)Φ32xΦ40x2245	2	H=4500
275344017010		Cylinder(H=5000)	油缸(R)Φ32xΦ40x2495	2	H=5000
C	254198510001	Seal kits(standard mast lifting cylind	密封件修理包(标准门架起升缸)	2	

275398501027起升油缸 (标准门架)/Lifting tank (standard mast)



序号/NO	编码/SN	Name	名称	数量/QTY	备注/Remark
1	940200500014	Chain wheel bearing780307-Φ90XΦ	链轮轴承780307-Φ90XΦ35X21	2	
2	910401300016	Circlip GB894.1-30	轴用弹性挡圈GB894.1-30	2	
3	910100300051	Bolt GB5783-M12x35-8.8	螺栓GB5783-M12x35-8.8	2	
4	910400500008	Washer GB93-12	弹簧垫圈GB93-12	2	
5	▲	Split pin 2x3	开口销 2x32	2	
6	▲	LH1044 chain	LH1044板式链	2	
7	▲	Chain pin	链条销轴	4	
8	▲	Joint	长端接头	2	
9	▲	Split pin 3.2x30	开口销 3.2x30	2	
10	▲	Nut M16x1.5	球面螺母M16x1.5	2	
11	▲	Nut M16x1.5	螺母M16x1.5	2	
12	▲	Joint	短端接头	2	
13	254144020060	Fixing ring	U形螺栓Φ57	2	
14	254144020061	shield	防护罩	2	
15	254144020062	Fixing seat	固定座	2	
16	910400100006	Washer GB97.1-8-200HV	平垫圈GB97.1-8-200HV	4	
17	910400500006	Washer GB93-8	弹簧垫圈GB93-8	4	
18	910300100006	Nut GB6170-M8-10	螺母GB6170-M8-10	4	
19	910300100007	Nut GB6170-M10-10	螺母GB6170-M10-10	2	
20	910100300038	Bolt GB5783-M10x35-8.8	螺栓GB5783-M10x35-8.8	2	
21	910400500007	Washer GB93-10	弹簧垫圈GB93-10	6	
22	910100400002	Bolt GB5786-M10x1.25x20-8.8	螺栓GB5786-M10x1.25x20-8.8	2	
23	▲	Piston rod	活塞杆	1	
24	▲	Adjusting bushing Φ35.5xΦ44xL1	调整套Φ35.5xΦ44xL1	1	
25	▲	Circlip	钢丝挡圈	1	
26	▲	Bearing D45x8(t=2.5)	支承环D45x8(t=2.5)	1	
27	▲	Catch35x45x3	挡片35x45x3	1	
28	▲	Seal ring 45x35x6	孔用密封圈	1	
29	▲	Piston rod	活塞	1	
30	▲	Copper bushing	铜套	1	
31	▲	Circlip	钢丝挡圈	1	

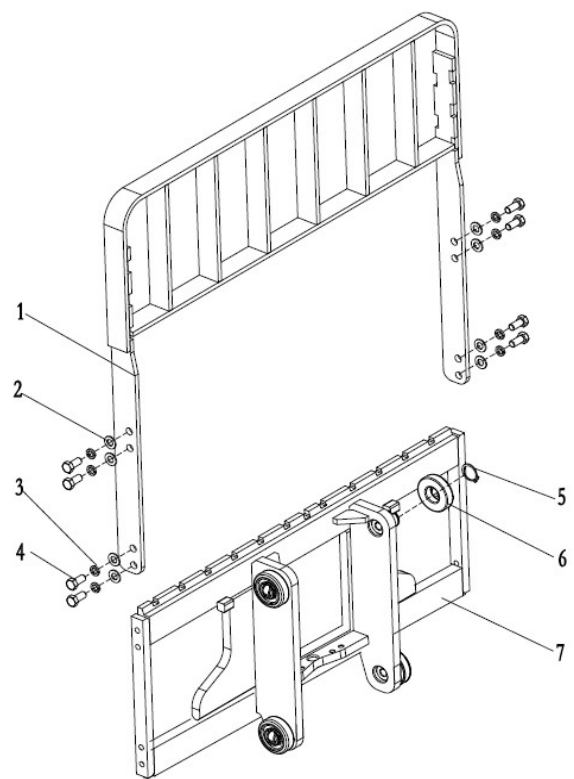
275398501028侧移器及管路安装(标准门架)/Side shifter and pipeline installation (standard mast)



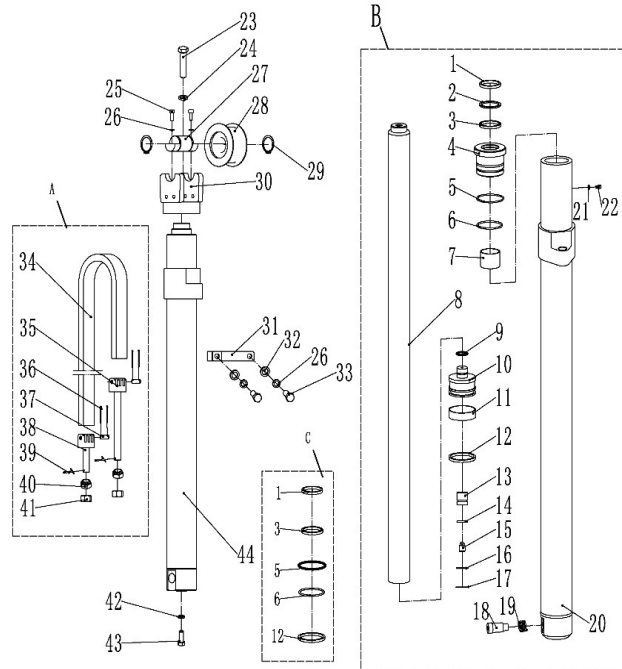
序号/NO	编码/SN	Name	名称	数量/QTY	备注/Remark
1	910100100054	Bolt GB5782-M12x80-8.8	螺栓GB5782-M12x80-8.8	1	
2	910400500008	Spring washer GB93-12	弹簧垫圈GB93-12	1	
3	910400100008	Flat washer GB97.1-12-200HV	平垫圈GB97.1-12-200HV	1	
4	255030520022	Bushing Φ 22x Φ 13x56	衬套Φ22xΦ13x56	1	
5	255030520021	Pulley Φ 110x27 (single slot)	滑轮Φ110x27(单槽)	2	
6	910400200005	big Washer GB96.1-12-200HV	大垫圈GB96.1-12-200HV	2	
7	910200200062	ScrewGB70.1-M8x45-8.8	螺钉GB70.1-M8x45-8.8	6	
8	910400500006	Washer GB93-8	弹簧垫圈GB93-8	4	
9	910400100006	Washer GB97.1-8-200HV	平垫圈GB97.1-8-200HV	4	
10	255028520035	Pipe press fixedly piank	管夹安装板	4	
11	255028520034	Rubber pipe lump	胶管固定块	8	
12	275231029010	Hydraulic pipe assembly (10-L3040	液压管总成(直)10-L3040-1SC-60°	2	H=2500
	255031020013	Hydraulic pipe assembly (10-L3180	液压管总成(直)10-L3180-1SC-60°	2	H=2700
	254128520040	Hydraulic pipe assembly (10-L3500	液压管总成(直)10-L3500-1SC-60°	2	H=3000
	255028520061	Hydraulic pipe assembly (10-L3920	液压管总成(直)10-L3920-1SC-60°	2	H=3300
	252130520702	Hydraulic pipe assembly (10-L4015	液压管总成(直)10-L4015-1SC-60°	2	H=3500
	281227511002	Hydraulic pipe assembly (10-L4200	液压管总成(直)10-L4200-1SC-60°	2	H=3700
	275228011001	Hydraulic pipe assembly (10-L4650	液压管总成(直)10-L4650-1SC-60°	2	H=4000
	281227511005	Hydraulic pipe assembly (10-L4900	液压管总成(直)10-L4900-1SC-60°	2	H=4300
	281228011003	Hydraulic pipe assembly (10-L5400-	液压管总成(直)10-L5400-1SC-60°	2	H=4500
13	281227511008	Hydraulic pipe assembly (10-L5950	液压管总成(直)10-L5950-1SC-60°	2	H=5000
13	255029020024	Splice 8-2xM16x1.5-60%d	接头(锁定弯)8-2xM16x1.5-60%d	4	
14	254127520001	Mounting plate	安装板	2	
15	910200200057	ScrewGB70.1-M8x20-8.8	螺钉GB70.1-M8x20-8.8	2	
16	255030520007	Hydraulic pipe assembly (10-L3840	液压管总成(直)10-L3840-1SC-60°		H=2500
	256529020902	Hydraulic pipe assembly (10-L3980	液压管总成(直)10-L3980-1SC-60°		H=2700
	281227511003	Hydraulic pipe assembly (10-L4300	液压管总成(直)10-L4300-1SC-60°		H=3000
	275227511002	Hydraulic pipe assembly (10-L4700	液压管总成(直)10-L4700-1SC-60°		H=3300
	255028520063	Hydraulic pipe assembly (10-L4820	液压管总成(直)10-L4820-1SC-60°		H=3500
	281227511005	Hydraulic pipe assembly (10-L4900	液压管总成(直)10-L4900-1SC-60°		H=3700
	281228011003	Hydraulic pipe assembly (10-L5400	液压管总成(直)10-L5400-1SC-60°		H=4000

275398501030货叉架(二级全自由) /Fork carrier (two stage full free)

序号/NO	编码/SN	Name	名称	数量/QTY	备注/Remark
1	275340511001	Block shelf soldering (980x990)	挡货架焊合 (970x990)	1	
2	910400100009	Flat washer GB97.1-14-200HV	平垫圈GB97.1-14-200HV	8	
3	910400500009	Spring washer GB93-14	弹簧垫圈GB93-14	8	
4	910100300062	Bolt GB5783-M14x30-8.8	螺栓GB5783-M14x30-8.8	8	
5	910401300018	Shaft elastic ring GB894.1-35	轴用弹性挡圈GB894.1-35	4	
6	940200300007	Compound roller Φ 78.3-range 45.3	复合滚轮Φ78.3-range=45.3-49.3	4	
7	275338012001	Fork frame welding (two stage full fr	货叉架焊合(二级全自由门架)	1	

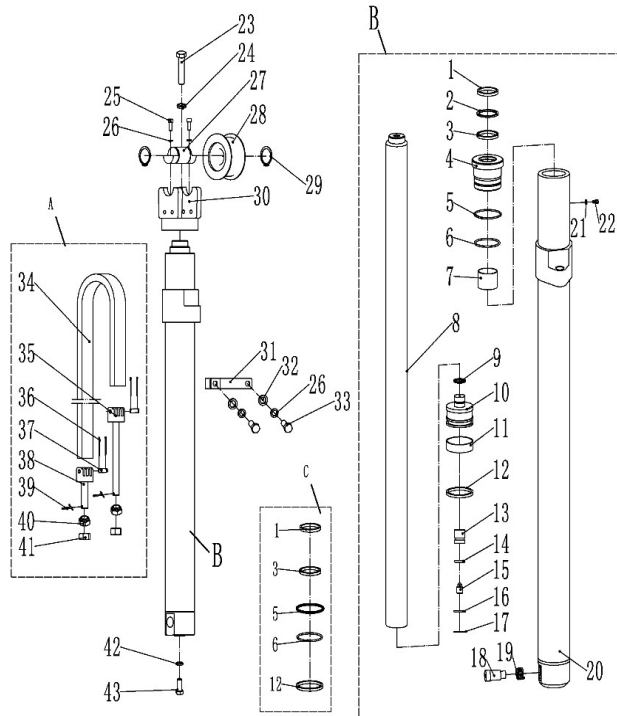


275398501032短升降油缸(二级全自由) /Short lifting cylinder (two stage full free)



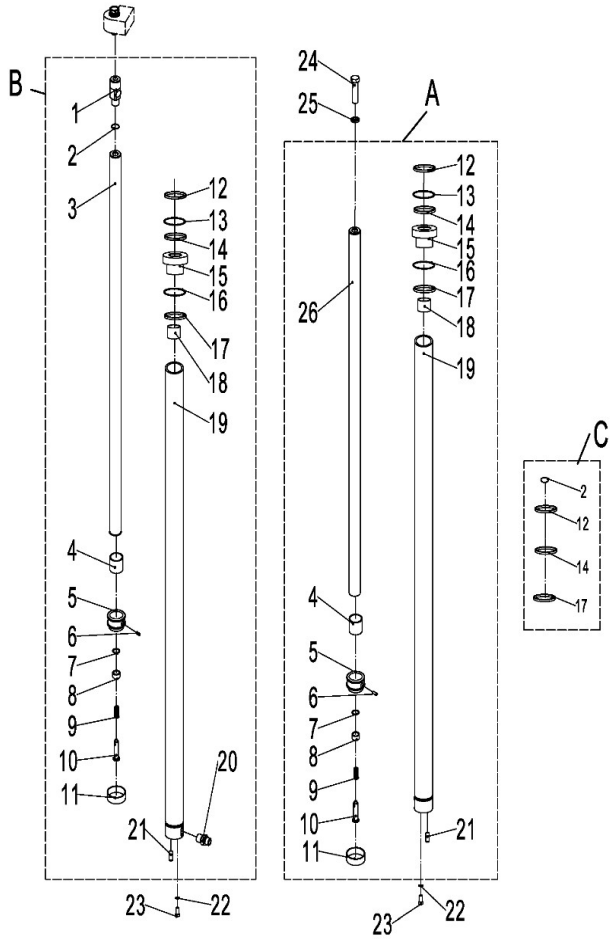
序号/NO	编码/SN	Name	名称	数量/QTY	备注/Remark
A	254143510060	Lifting chain LH1266-65	起升链条LH1266-65	2	H=2500
	254143510061	Lifting chain LH1266-71	起升链条LH1266-71	2	H=2700
	254143510062	Lifting chain LH1266-79	起升链条LH1266-79	2	H=3000
	254143510063	Lifting chain LH1266-87	起升链条LH1266-87	2	H=3300
	254143510064	Lifting chain LH1266-93	起升链条LH1266-93	2	H=3500
	254143510065	Lifting chain LH1266-97	起升链条LH1266-97	2	H=3700
	254143510066	Lifting chain LH1266-105	起升链条LH1266-105	2	H=4000
	254143510067	Lifting chain LH1266-113	起升链条LH1266-113	2	H=4300
	254143510068	Lifting chain LH1266-119	起升链条LH1266-119	2	H=4500
	254143510069	Lifting chain LH1266-133	起升链条LH1266-133	2	H=5000
B	254143510100	cylinder(M) Φ 70x Φ 55x620	油缸(M) Φ 70x Φ 55x620	1	H=2500
	254143510101	cylinder(M) Φ 70x Φ 55x670	油缸(M) Φ 70x Φ 55x670	1	H=2700
	254143510102	cylinder(M) Φ 70x Φ 55x745	油缸(M) Φ 70x Φ 55x745	1	H=3000
	254143510103	cylinder(M) Φ 70x Φ 55x820	油缸(M) Φ 70x Φ 55x820	1	H=3300
	254143510104	cylinder(M) Φ 70x Φ 55x870	油缸(M) Φ 70x Φ 55x870	1	H=3500
	254143510105	cylinder(M) Φ 70x Φ 55x920	油缸(M) Φ 70x Φ 55x920	1	H=3700
	254143510106	cylinder(M) Φ 70x Φ 55x995	油缸(M) Φ 70x Φ 55x995	1	H=4000
	254143510107	cylinder(M) Φ 70x Φ 55x1070	油缸(M) Φ 70x Φ 55x1070	1	H=4300
	254143510108	cylinder(M) Φ 70x Φ 55x1120	油缸(M) Φ 70x Φ 55x1120	1	H=4500
	254143510109	cylinder(M) Φ 70x Φ 55x1245	油缸(M) Φ 70x Φ 55x1245	1	H=5000
C	254198510004	Seal kits (two stage full free middle	密封件修理包(二级全自由中缸)	1	
1	▲	Dust ring 50x58x7/6.5	防尘圈50x58x7/6.5	1	
2	▲	Catch 50×60×3	挡片50x60x3	1	
3	▲	Seal ring 50×60×6	密封圈50x60x6	1	
4	▲	Glide sleeve	导向套	1	
5	▲	O ring D75X3.1	O型密封圈D75X3.1	1	
6	▲	O ring D75X3.1	O型密封圈D70x3.1	1	
7	▲	Bearing50x55x40	钢背轴承 50x55x40	1	
8	▲	Piston rod	活塞杆	1	
9	▲	Circlip	钢丝挡圈	1	
10	▲	Piston assembly	活塞总成	1	

275398501032短升降油缸(二级全自由) /Short lifting cylinder (two stage full free)



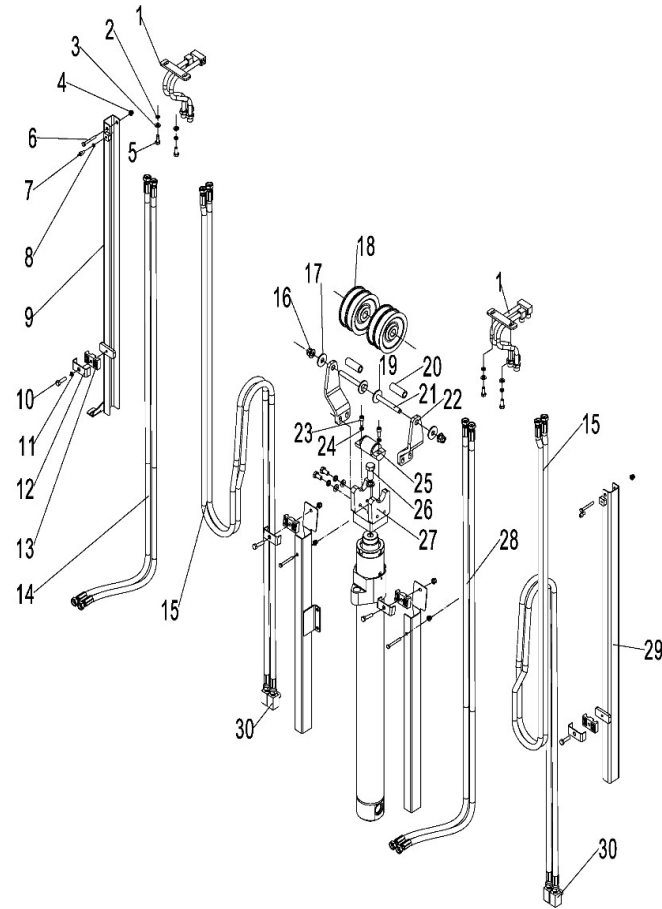
序号/NO	编码/SN	Name	名称	数量/QTY	备注/Remark
11	▲	Support ring 65x70x20	支承环65x70x20	1	
12	▲	Seal ring 70x60x6	孔用密封圈70x60x6	1	
13	▲	Valve cover	阀套	1	
14	▲	O ring D15x2.4	O型密封圈D15x2.4	1	
15	▲	Valve plug	阀芯	1	
16	▲	Catch	挡片	1	
17	▲	Circlip 22(inport)	挡圈 22(进口型)	1	
18	▲	Slide valve	滑阀	1	
19	▲	Spring 2.3x15x48.5	弹簧 2.3x15x48.5	1	
20	▲	Cylinder	缸体	1	
21	▲	Spacer	垫片	1	
22	▲	Screw M5x5	螺钉 M5x6	1	
23	910200200123	Bolt GB5783-M16x35-8.8	螺栓 5783-M16x35-8.8	1	
24	910400500010	Spring Washer GB93-16	弹簧垫圈 GB93-16	1	
25	941100400001	Screw GB70.1-M8x20-8.8	螺钉 GB70.1-M8x20-8.8	2	
26	910400500006	Washer GB93-8	弹簧垫圈 GB93-8	4	
27	254143520056	Chain wheel bearing	链轮轴	1	
28	940200500009	Chain wheel bearing 785208	链轮轴承 785208-00-Φ95xΦ40xΦ47	1	
29	910401300020	Circlip GB894.1-40	轴用弹性挡圈 GB894.1-40	2	
30	254143510050	Chain wheel weld	链轮座焊合	1	
31	254143520072	Embrace hoop	抱箍	1	
32	910400100006	Washer GB97.1-8-200HV	平垫圈 GB97.1-8-200HV	2	
33	910100300022	Bolt GB5783-M8x20-8.8	螺栓 GB5783-M8x20-8.8	2	
34	910900400013	LH1266 chain	LH1266板式链	1	
35	254143520070	Chain bolt m18x1.5x185.5	长端接头	1	
36	910600600019	Split pin 2.5x25	开口销 GB91-2.5x25	2	
37	254143520073	Pin Φ x54.5 7.94	销轴 Φ7.94x54.5	2	
38	254143520071	Joint	短端接头	1	
39	910600600032	split pin 3.2x40	开口销 3.2x40	2	
40	255044020158	Nut M18x1.5	球面螺母 M18x1.5	2	
41	254143520070	Nut M18x1.5	螺母 M18x1.5	2	

275398501033起升降油缸(二级全自由) / Lifting cylinder (two stage full free)



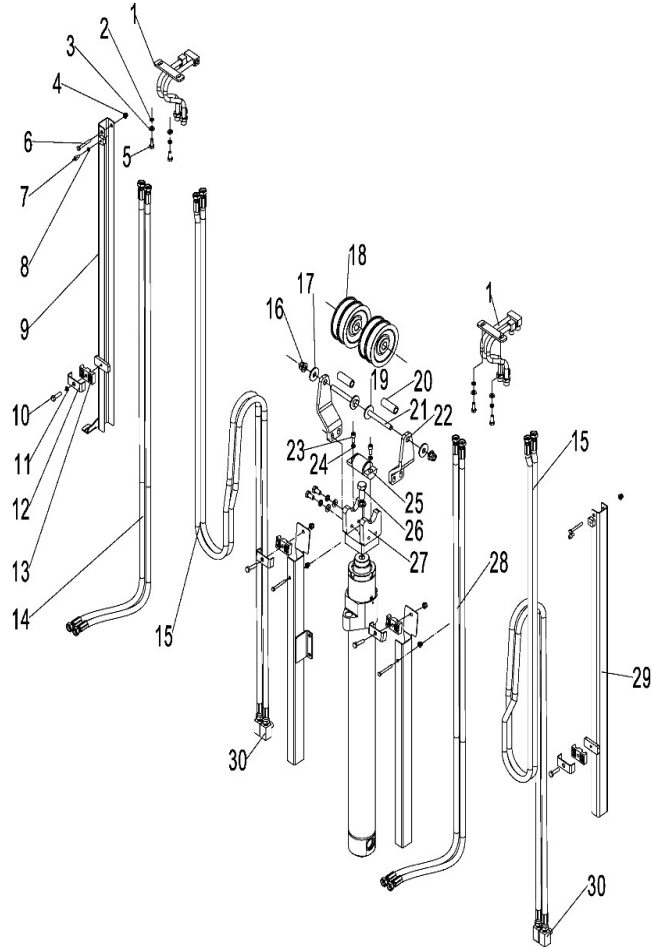
序号/NO	编码/SN	Name	名称	数量/QTY	备注/Remark
A	275343516001	cylinderΦ32xΦ40x1490	油缸Φ32xΦ40x1490	1	H=2500
	275343516002	cylinderΦ32xΦ40x1590	油缸Φ32xΦ40x1590	1	H=2700
	275343516003	cylinderΦ32xΦ40x1740	油缸Φ32xΦ40x1740	1	H=3000
	275343516004	cylinderΦ32xΦ40x1890	油缸Φ32xΦ40x1890	1	H=3300
	275343516005	cylinderΦ32xΦ40x1990	油缸Φ32xΦ40x1990	1	H=3500
	275343516006	cylinderΦ32xΦ40x2090	油缸Φ32xΦ40x2090	1	H=3700
	275343516007	cylinderΦ32xΦ40x2290	油缸Φ32xΦ40x2290	1	H=4000
	275343516008	cylinderΦ32xΦ40x2440	油缸Φ32xΦ40x2440	1	H=4300
	275343516009	cylinderΦ32xΦ40x2540	油缸Φ32xΦ40x2540	1	H=4500
	275343516010	cylinderΦ32xΦ40x2815	油缸Φ32xΦ40x2815	1	H=5000
B	275343517001	cylinderΦ32xΦ40x1490	油缸Φ32xΦ40x1490	1	H=2500
	275343517002	cylinderΦ32xΦ40x1590	油缸Φ32xΦ40x1590	1	H=2700
	275343517003	cylinderΦ32xΦ40x1740	油缸Φ32xΦ40x1740	1	H=3000
	275343517004	cylinderΦ32xΦ40x1890	油缸Φ32xΦ40x1890	1	H=3300
	275343517005	cylinderΦ32xΦ40x1990	油缸Φ32xΦ40x1990	1	H=3500
	275343517006	cylinderΦ32xΦ40x2090	油缸Φ32xΦ40x2090	1	H=3700
	275343517007	cylinderΦ32xΦ40x2290	油缸Φ32xΦ40x2290	1	H=4000
	275343517008	cylinderΦ32xΦ40x2440	油缸Φ32xΦ40x2440	1	H=4300
	275343517009	cylinderΦ32xΦ40x2540	油缸Φ32xΦ40x2540	1	H=4500
	275343517010	cylinderΦ32xΦ40x2815	油缸Φ32xΦ40x2815	1	H=5000
1	▲	Connecting rod	左连接杆	1	
2	▲	O ring 26x2.4	O型密封圈	1	
3	▲	Piston rod assembly	左柱塞杆总成	1	
4	▲	Adjusting bushing	调整套	2	
5	▲	Piston	缓冲活塞	2	
6	▲	ScrewM4x6	内六角凹端紧固螺钉M4x6	2	
7	▲	Circlip Φ18	钢丝挡圈Φ18	2	
8	▲	Copper bushing	铜套	2	
9	▲	Spring	弹簧	2	
10	▲	Buffer plunger	缓冲柱塞	2	
11	▲	Supporting ring45x15x2.5	支承环45x15x2.5	2	

275398501034管路及安装(二级全自由)/Pipeline and installation (secondary full freedom)



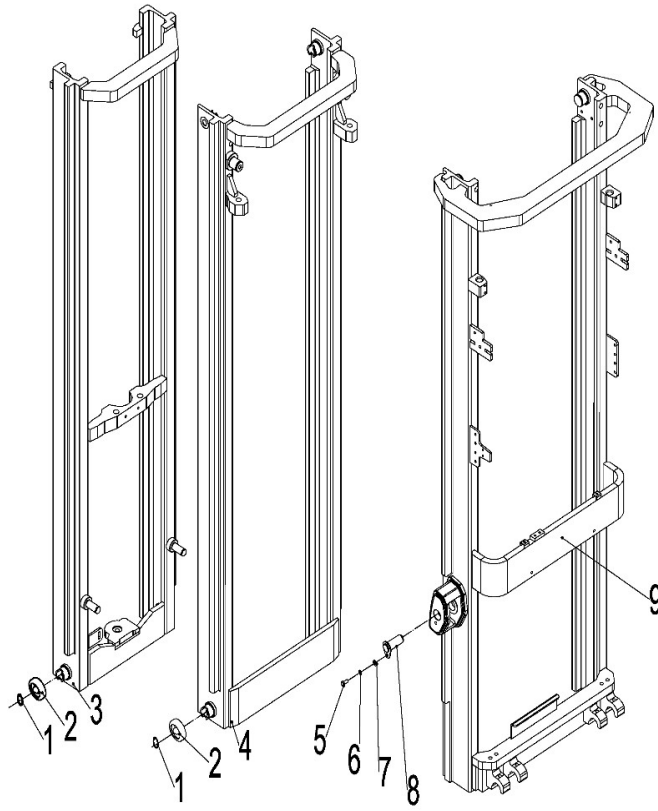
序号/NO	编码/SN	Name	名称	数量/QTY	备注/Remark
1	254128510001	Excessive steel pipe	过度钢管焊合(24°)	1	
2	910400100006	Washer GB97.1-8-200HV	平垫圈GB97.1-8-200HV	13	
3	910400500006	Washer GB93-8	弹簧垫圈GB93-8	7	
4	910300500003	Nut GB889.1 M6-10	螺母GB889.1-M6-10	2	
5	910100300022	Blot GB5783-M8x20-8.8	螺栓GB5783-M8x20-8.8	7	
6	910100300016	BoltGB5783-M6X50-8.8	螺栓GB5783-M6x50-8.8	2	
7	941100100009	Screw M6X12-8.8	螺钉M6x12-8.8	1	
8	910400500005	Washer GB93-6	弹簧垫圈GB93-6	2	
9	254128510012	Groove welding(outer) L=705	外导槽焊合L=705	2	H=2500
	254128510013	Groove welding(outer) L=805	外导槽焊合L=805	2	H=2700
	254128510014	Groove welding(outer) L=955	外导槽焊合L=955	2	H=3000
	254128510015	Groove welding(outer) L=1105	外导槽焊合L=1105	2	H=3300
	254128510016	Groove welding(outer) L=1205	外导槽焊合L=1205	2	H=3500
	254128510017	Groove welding(outer) L=1305	外导槽焊合L=1305	2	H=3700
	254128510018	Groove welding(outer) L=1505	外导槽焊合L=1505	2	H=4000
	254128510019	Groove welding(outer) L=1655	外导槽焊合L=1655	2	H=4300
	254128510020	Groove welding(outer) L=1755	外导槽焊合L=1755	2	H=4500
	254128510021	Groove welding(outer) L=2030	外导槽焊合L=2030	2	H=5000
10	910200200061	Screw GB70.1M8X40-8.8	螺钉GB70.1-M8x40-8.8	2	
11	910400500006	Washer GB93-8	弹簧垫圈GB93-8	1	
12	255028520035	Rubber pipe lump	安装板(管夹)	2	
13	255028520034	Pipe press fixedly plank	胶管固定块	2	
14	281229020021	Hydraulic hose assembly 10-L1650-	液压管总成(直)10-L1650-1SC-60	2	H=2500
	254130520004	Hydraulic hose assembly 10-L1745-	液压管总成(直)10-L1795-1SC-60°	2	H=2700
	281229020022	Hydraulic hose assembly 10-L1900-	液压管总成(直)10-L1900-1SC-60°	2	H=3000
	255030520001	Hydraulic hose assembly 10-L2060-	液压管总成(直)10-L2060-1SC-60°	2	H=3300
	255028520044	Hydraulic hose assembly 10-L2150-	液压管总成(直)10-L2150-1SC-60°	2	H=3500
	255028520018	Hydraulic hose assembly 10-L2270-	液压管总成(直)10-L2270-1SC-60°	2	H=3700
	254130520009	Hydraulic hose assembly 10-L2470-	液压管总成(直)10-L2470-1SC-60°	2	H=4000
	255031020010	Hydraulic hose assembly 10-L2590-	液压管总成(直)10-L2590-1SC-60°	2	H=4300
	263028520009	Hydraulic hose assembly 10-L2690-	液压管总成(直)10-L2690-1SC-60°	2	H=4500

275398501034管路及安装(二级全自由)/Pipeline and installation (secondary full freedom)



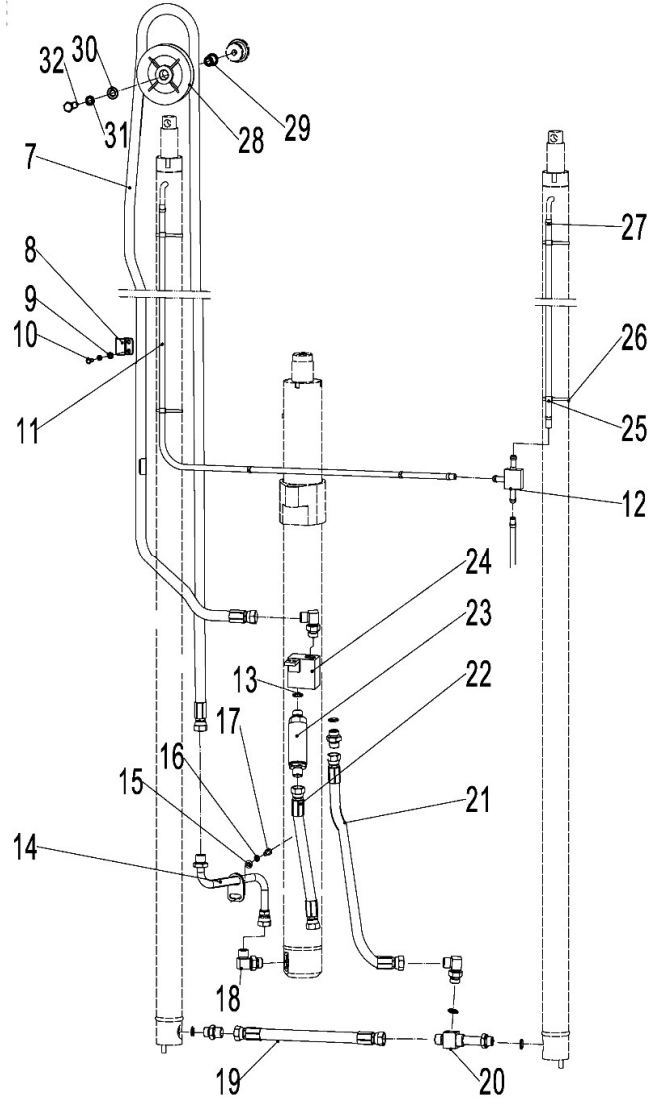
序号/NO	编码/SN	Name	名称	数量/QTY	备注/Remark
14	281229020023	Hydraulic hose assembly 10-L2975-	液压管总成(直)10-L2975-1SC-60°	2	H=5000
15	254128520031	Hydraulic hose assembly 10-L2350-	液压管总成(直)10-L2350-1SC-60°	2	H=2500
	254128520031	Hydraulic hose assembly 10-L2350-	液压管总成(直)10-L2350-1SC-60°	2	H=2700
	254128520052	Hydraulic hose assembly 10-L2650-	液压管总成(直)10-L2650-1SC-60°	2	H=3000
	254128520052	Hydraulic hose assembly 10-L2650-	液压管总成(直)10-L2650-1SC-60°	2	H=3300
	254128520035	Hydraulic hose assembly 10-L2850-	液压管总成(直)10-L2850-1SC-60°	2	H=3500
	254128520035	Hydraulic hose assembly 10-L2850-	液压管总成(直)10-L2850-1SC-60°	2	H=3700
	254128520037	Hydraulic hose assembly 10-L3150-	液压管总成(直)10-L3150-1SC-60°	2	H=4000
	254128520037	Hydraulic hose assembly 10-L3150-	液压管总成(直)10-L3150-1SC-60°	2	H=4300
	254128520039	Hydraulic hose assembly 10-L3250-	液压管总成(直)10-L3250-1SC-60°	2	H=4500
	254128520040	Hydraulic hose assembly 10-L3500-	液压管总成(直)10-L3500-1SC-60°	2	H=5000
16	910300500006	Nut GB889.1-M12-10	螺母GB889.1-M12-10	1	
17	910400100008	Washer GB97.1-12-200HV	平垫圈GB97.1-12-200HV	1	
18	255030520021	pulleyΦ110x27	滑轮Φ110x27(单槽)	4	
19	910400200005	Washer GB96.1-12-200HV	大垫圈GB96.1-12-200HV	2	
20	255030520022	BushΦ20xΦ13x56	衬套Φ20xΦ13x56	2	
21	910100100058	Blot GB5782-M12x100-8.8	螺栓GB5782-M12x100-8.8	1	
22	251128520059	Pulley frame	滑轮支板	1	
23	910200200057	Bolt M8x20	螺钉 M8x20	2	
24	910400500006	Spring washer gb93-8	弹簧垫圈GB93-8	2	
25	254143520056	Axle Φ40x91	轮轴Φ40x91	1	
26	910100300069	Bolt M16x35	螺钉 M16x35	1	
27	254143510050	sprocket seat welded	链轮座焊合	1	
28	254128520043	Hydraulic hose assembly(90°)10-L1900-	液压管总成(90°)10-L1900-1SC-60°	2	H=2500
	254128520055	Hydraulic hose assembly(90°)10-L2000-	液压管总成(90°)10-L2000-1SC-60°	2	H=2700
	254128520051	Hydraulic hose assembly(90°)10-L2150-	液压管总成(90°)10-L2150-1SC-60°	2	H=3000
	254128520056	Hydraulic hose assembly(90°)10-L2300-	液压管总成(90°)10-L2300-1SC-60°	2	H=3300
	252027520002	Hydraulic hose assembly(90°)10-L2400-	液压管总成(90°)10-L2400-1SC-60°	2	H=3500
	284023520003	Hydraulic hose assembly(90°)10-L2500-	液压管总成(90°)10-L2500-1SC-60°	2	H=3700
	254128520054	Hydraulic hose assembly(90°)10-L2700-	液压管总成(90°)10-L2700-1SC-60°	2	H=4000
29	254128510002	Groove welding (inner)L=515	内导槽焊合L=515	2	H=2500

275398501035门架(三级全自由) /Mast (three stage full free)



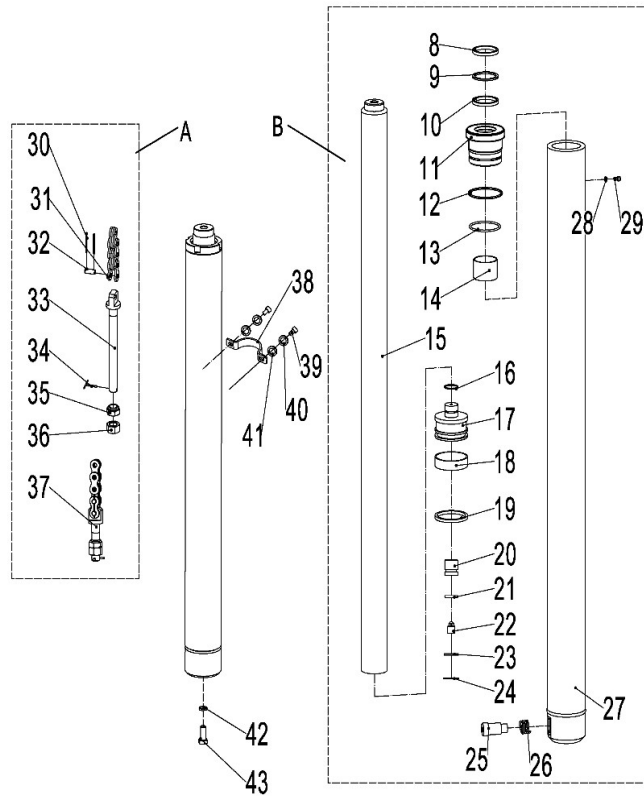
序号/NO	编码/SN	Name	名称	数量/QTY	备注/Remark
1	910401300016	Shaft elastic ring GB894.1-30	轴用弹性挡圈GB894.1-30	8	
2	940200399011	Compound roller Φ 78.8- Φ 79.1-range=45.3	复合滚轮 Φ 78.8- Φ 79.1-range=45.3	8	
3	275344512001	Inner mast 4000	内门架焊合4000	1	H=4000
	275344512002	Inner mast 4350	内门架焊合4350	1	H=4350
	275344512003	Inner mast 4500	内门架焊合4500	1	H=4500
	275344512004	Inner mast 4800	内门架焊合4800	1	H=4800
	275344512005	Inner mast 5000	内门架焊合5000	1	H=5000
	275344512006	Inner mast 5500	内门架焊合5500	1	H=5500
	275344512007	Inner mast 6000	内门架焊合6000	1	H=6000
4	275344513001	Middle mast 4000	中门架焊合4000	1	H=4000
	275344513002	Middle mast 4350	中门架焊合4350	1	H=4350
	275344513003	Middle mast 4500	中门架焊合4500	1	H=4500
	275344513004	Middle mast 4800	中门架焊合4800	1	H=4800
	275344513005	Middle mast 5000	中门架焊合5000	1	H=5000
	275344513006	Middle mast 5500	中门架焊合5500	1	H=5500
	275344513007	Middle mast 6000	中门架焊合6000	1	H=6000
5	910100300035	Bolt GB5783-M10x20-8.8	螺栓GB5783-M10x20-8.8	4	
6	910400500007	Washer GB93-10	弹簧垫圈GB93-10	4	
7	910400100007	Washer GB97.1-10-200HV	平垫圈GB97.1-10-200HV	4	
8	253520510005	Axle Φ 30x82	带耳轴 Φ 30x82	2	
9	275344511001	Outer mast 4000	外门架焊合 4000	1	H=4000
	275344511002	Outer mast 4350	外门架焊合 4350	1	H=4350
	275344511003	Outer mast 4500	外门架焊合 4500	1	H=4500
	275344511004	Outer mast 4800	外门架焊合 4800	1	H=4800
	275344511005	Outer mast 5000	外门架焊合5000	1	H=5000
	275344511006	Outer mast 5500	外门架焊合 5500	1	H=5500
	275344511007	Outer mast 6000	外门架焊合 6000	2	H=6000

275398501037 门架起升管路(三级全自由)/Mast lifting pipeline (three stage full free lift)



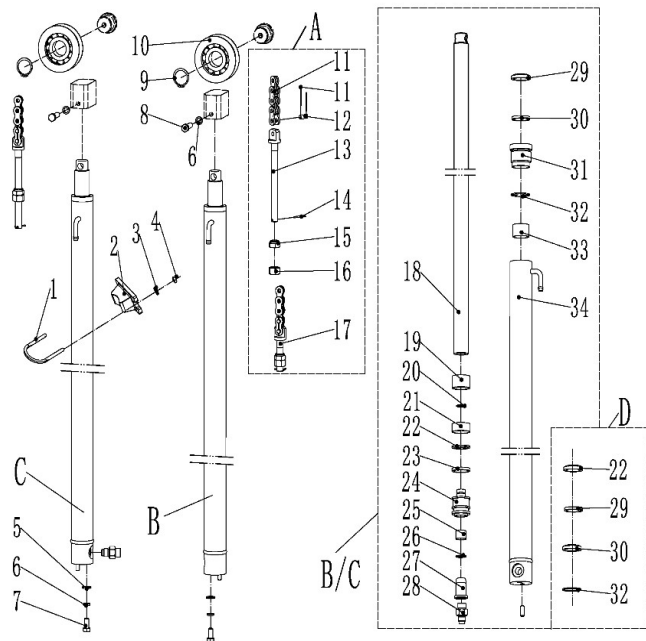
序号/NO	编码/SN	Name	名称	数量/QTY	备注/Remark
7	275344529015	Hydraulic hose assembly 12-L2640-	液压管总成(直)12-L2640-2SC-60°	1	H=4000
7	254144520041	Hydraulic hose assembly 12-L2900-	液压管总成(直)12-L2900-2SC-60°	1	H=4350
7	281244519102	Hydraulic hose assembly 12-L2980-	液压管总成(直)12-L2980-2SC-60°	1	H=4500
7	271544529501	Hydraulic hose assembly 12-L3180-	液压管总成(直)12-L3180-2SC-60°	1	H=4800
7	275344529016	Hydraulic hose assembly 12-L3280-	液压管总成(直)12-L3280-2SC-60°	1	H=5000
7	275344529017	Hydraulic hose assembly 12-L3680-	液压管总成(直)12-L3680-2SC-60°	1	H=5500
7	271544529505	Hydraulic hose assembly 12-L4090-	液压管总成(直)12-L4090-2SC-60°	1	H=6000
8	255044520132	Tubing clamps	油管夹	4	
9	910400500005	Spring washer gb93-6	弹簧垫圈GB93-6	6	
10	910200200035	Screw GB70.1 M6x16-8.8	螺钉GB70.1-M6x16-8.8	4	
11	▲	PE Supple pipeΦ10xΦ13	PE软管Φ10xΦ13	3	
12	255044020118	Connector (tee)	接头(三通)	1	
13	▲	O - inner 19x2.65	O形圈-内19x2.65	3	
14	275344519001	Medium cylinder transition steel pipe	中缸过渡钢管焊接	1	
15	910400100006	The flat washer GB97.1-8-200 hv	平垫圈GB97.1-8-200HV	3	
16	910400500006	Spring washer gb93-8	弹簧垫圈GB93-8	3	
17	910100300023	Bolt GB5783 M8x25-8.8	螺栓GB5783-M8x25-8.8	3	
18	255043520022	Connector (lock bend) 12-m27x2-m	接头(锁定弯)12-M27x2-M22x1.	1	
19	275344529004	Hydraulic pipe assembly (straight) 1	液压管总成(直)12-L310-2SC-60°	1	
20	254144020038	Connector (tee)	接头(三通)	1	
21	275344529001	Hydraulic pipe assembly (straight) 1	液压管总成(直)10-L650-2SC-24°	1	
22	255044520069	Hydraulic pipe assembly (90°) 15-L1	液压管总成(90°)15-L1050-2SC-60°	1	
23	275044010057	The speed limit valve XSF - F16L -	限速阀XSF-F16L-30	1	
24	254144510022	Tee welded	三通焊接	1	
25	255044020042	clamp	压板	4	
26	921600400001	4 x250 tie	扎带4x250	6	
27	255044020043	Clamp 13	卡箍13	6	
28	255030520021	Pulley Φ x27 110 (single slot)	滑轮Φ110x27(单槽)	1	
29	255044520081	Bushings (shoulder) Φ Φ 13 x 20 x2	衬套(带肩)Φ20xΦ13x28	1	
30	910400200005	big washer GB96.1-12-200HV	大垫圈GB96.1-12-200HV	1	
31	910400500008	Spring washer gb93-12	弹簧垫圈GB93-12	1	

275398501038 短升降油缸(三级全自由) / Short lifting cylinder (three stage full free)



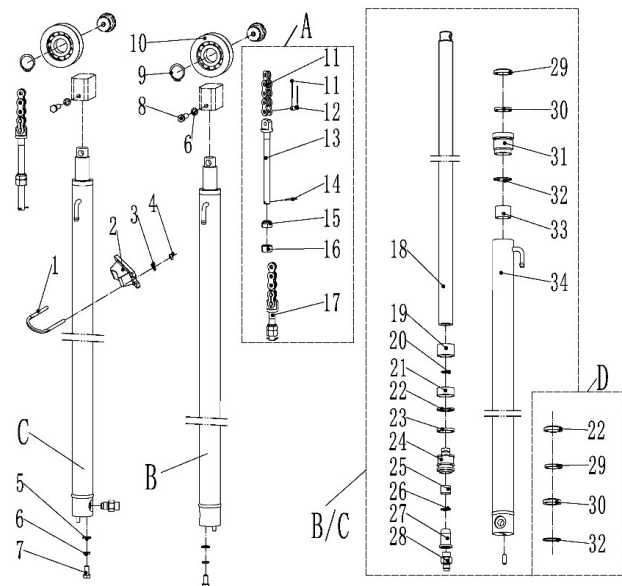
序号/NO	编码/SN	Name	名称	数量/QTY	备注/Remark
A	275344515001	Lifting chain LH1223-63	起升链条LH1223-63	2	H=4000
A	275244515003	Lifting chain LH1223-65	起升链条LH1223-65	2	H=4350
A	275344515002	Lifting chain LH1223-69	起升链条LH1223-69	2	H=4500
A	275244515005	Lifting chain LH1223-71	起升链条LH1223-71	2	H=4800
A	275344515003	Lifting chain LH1223-75	起升链条LH1223-75	2	H=5000
A	275344515004	Lifting chain LH1223-79	起升链条LH1223-79	2	H=5500
A	275344515005	Lifting chain LH1223-85	起升链条LH1223-85	2	H=6000
B	275344518001	Short lifting cylinder H=4000	油缸(M)(H=4000)	1	H=4000
B	275344518002	Short lifting cylinder H=4300	油缸(M)(H=4350)	1	H=4350
B	275344518003	Short lifting cylinder H=4500	油缸(M)(H=4500)	1	H=4500
B	275344518004	Short lifting cylinder H=4800	油缸(M)(H=4800)	1	H=4800
B	275344518005	Short lifting cylinder H=5000	油缸(M)(H=5000)	1	H=5000
B	275344518006	Short lifting cylinder H=5500	油缸(M)(H=5500)	1	H=5500
B	275344518007	Short lifting cylinder H=6000	油缸(M)(H=6000)	1	H=6000
8	▲	Dust ring 50x58x7/6.5	防尘圈50x58x7/6.5	1	
9	▲	Catch 50×60×3	挡片50x60x3	1	
10	▲	Seal ring 50×60×6	密封圈50x60x6	1	
11	▲	Glide sleeve	导向套	1	
12	▲	O ring D75X3.1	O型密封圈D75X3.1	1	
13	▲	O ring D75X3.1	O型密封圈D70x3.1	1	
14	▲	Bearing50x55x40	钢背轴承 50x55x40	1	
15	▲	HSG Piston rod	HSG活塞杆	1	
16	▲	Circlip	钢丝挡圈	1	
17	▲	Piston assembly	活塞总成	1	
18	▲	Support ring 65x70x20	支承环65x70x20	1	
19	▲	Seal ring 70x60x6	孔用密封圈70x60x6	1	
20	▲	Valve cover	阀套	1	
21	▲	O ring D15x2.4	O型密封圈D15x2.4	1	
22	▲	Valve plug	阀芯	1	
23	▲	Catch	挡片	1	
24	▲	Circlip 22(inport)	挡圈 22(进口型)	1	

275398501039 起升油缸 (三级全自由) /Lifting cylinder(three stage full free)



序号/NO	编码/SN	Name	名称	数量/QTY	备注/Remark
A	275344514001	Lifting chain LH1044T-101	起升链条(附件)LH1044-101	2	H=4000
	275344514002	Lifting chain LH1044T-111	起升链条(附件)LH1044-111	2	H=4350
	275344514003	Lifting chain LH1044T-113	起升链条(附件)LH1044-113	2	H=4500
	275344514004	Lifting chain LH1044T-119	起升链条(附件)LH1044-119	2	H=4800
	275344514005	Lifting chain LH1044T-123	起升链条(附件)LH1044-123	2	H=5000
	275344514006	Lifting chain LH1044T-135	起升链条(附件)LH1044-135	2	H=5500
	275344514007	Lifting chain LH1044T-147	起升链条(附件)LH1044-137	2	H=6000
B	275344517001	Right lifting cylinder H=4000	油缸(R)(H=4000)	2	H=4000
	275344517002	Right lifting cylinder H=4300	油缸(R)(H=4350)	2	H=4350
	275344517003	Right lifting cylinder H=4500	油缸(R)(H=4500)	2	H=4500
	275344517004	Right lifting cylinder H=4800	油缸(R)(H=4800)	2	H=4800
	275344517005	Right lifting cylinder H=5000	油缸(R)(H=5000)	2	H=5000
	275344517006	Right lifting cylinder H=5500	油缸(R)(H=5500)	2	H=5500
	275344517007	Right lifting cylinder H=6000	油缸(R)(H=6000)	2	H=6000
C	275344516001	Left lifting cylinder H=4000	油缸(L)(H=4000)	2	H=4000
	275344516002	Left lifting cylinder H=4350	油缸(L)(H=4350)	2	H=4350
	275344516003	Left lifting cylinder H=4500	油缸(L)(H=4500)	2	H=4500
	275344516004	Left lifting cylinder H=4800	油缸(L)(H=4800)	2	H=4800
	275344516005	Left lifting cylinder H=5000	油缸(L)(H=5000)	2	H=5000
	275344516006	Left lifting cylinder H=5500	油缸(L)(H=5500)	2	H=5500
	275344516007	Left lifting cylinder H=6000	油缸(L)(H=6000)	2	H=6000
D	254198510003	Seal kits(three stage full free lifting cylinder)	密封件修理包(三级全自由起升缸)	1	
1	254144020060	Hoop(inner)	U形螺栓Φ57	2	
2	254144020061	Hoop(outer)	防护罩	2	
3	910400500006	Washer GB93-8	弹簧垫圈GB93-8	4	
4	910300100006	Bolt GB5783 M10x30-8.8	螺母GB6170-M8-10	4	
5	910400100008	Washer GB97.1-12-200HV	平垫圈GB97.1-12-200HV	2	
6	910400500008	Washer GB93-12	弹簧垫圈GB93-12	4	
7	910100400009	Bolt GB5786-M12x1.25x25-8.8	螺栓GB5786-M12x1.25x25-8.8	2	
8	910100300053	Bolt GB5783-M12x45-8.8	螺栓GB5783-M12x45-8.8	2	
9	910401300020	Circlip GB894.1-40	轴用弹性挡圈GB894.1-40	2	

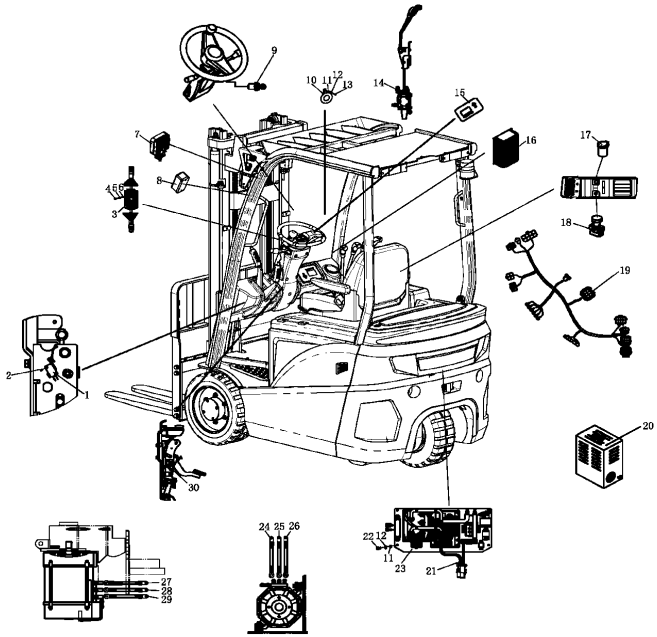
275398501039起升油缸（三级全自由）/Lifting cylinder(three stage full free)



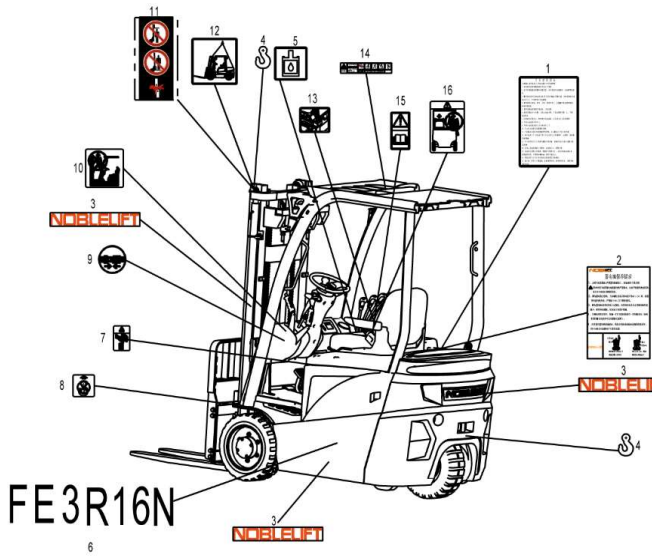
序号/NO	编码/SN	Name	名称	数量/QTY	备注/Remark
10	940200500016	Chain wheel bearing CG30B1-11-Φ	链轮轴承CG30B1-11-Φ85xΦ30x27.	2	
11	910900400010	LH1234 chain	板式链GB6074-LH1234	1	
12	910600600047	Split pin 2x30	开口销GB91-2x30	4	
13	251044020077	Chain pin LH1223	链条销轴LH1223	2	
14	251044020077	Pin Φ x24 7.94	销轴Φ7.94x24	2	
15	254144020064	Chain bolt M16x1.5-140.5	链条螺栓M16x1.5-140.5	2	
16	252044020121	Chain bolt M16x1.5-178	链条螺栓M16x1.5x178	2	
17	254144020065	Chain bolt M16x1.5-80	链条螺栓M16x1.5-80	2	
17	251244020101	Chain bolt M16x1.5-85	链条螺栓M16x1.5x85	2	
18	▲	Piston rod	活塞杆	1	
19	▲	Adjusting bushing 35.5x44xL1	调整套35.5x44xL1	1	
20	▲	Circlip	钢丝挡圈	1	
21	▲	41 x45x8 bearing ring	支承环41x45x8	1	
22	▲	Seal ring 45x35x6	孔用密封圈	1	
23	▲	35 x45x3 block slice	挡片35x45x3	1	
24	▲	Piston	活塞	1	
25	▲	Copper bushing	铜套	1	
26	▲	Circlip	钢丝挡圈	1	
27	▲	Buffer ring	缓冲环	1	
28	▲	Anti-explosion valve	防爆阀	1	
29	▲	Dust ring	防尘圈DH35X43X6.5	1	
30	▲	Seal ring	轴用密封圈35X45X6	1	
31	▲	Guide bushing	导向套	1	
32	▲	O seal ring	O型密封圈	1	
33	▲	Bearing 3530	钢背轴承3530	1	
34	▲	Cylinder	缸体	1	

275398501042 电器系统/Electrical system

序号/NO	编码/SN	Name	名称	数量/QTY	备注/Remark
1	920200300009	Microswitch RV-166-1C25	微动开关RV-166-1C25	1	
2	910400100003	Flat washer GB97.1-4-200HV	平垫圈GB97.1-4-200HV	2	
3	920200800013	Combined switch JK361B-1003	组合开关JK361B-1003	1	
4	910200500038	Screw GB818-M5x12-4.8	螺钉GB818-M5x12-4.8	4	
5	910400500004	Spring washer GB93-5	弹簧垫圈GB93-5	8	
6	910400100004	Flat washer GB97.1-5-200HV	平垫圈GB97.1-5-200HV	8	
7	922000100066	Light FLDD-9Z-FX	灯FLDD-9Z-FX	2	
8	922000100052	Light FLDJ-QXD-001	灯FLDJ-QXD-001	2	
9	920200200031	Key switch	钥匙开关(一档双路)	1	
10	920500100001	Horn 125-DC24V	喇叭125-DC24V	1	
11	910400100005	Flat washer GB97.1-6-200HV	平垫圈GB97.1-6-200HV	1	
12	910400500005	Spring washer GB93-6	弹簧垫圈GB93-6	1	
13	910200500051	Screw GB818-M6x12-4.8	螺钉GB818-M6x12-4.8	1	
14	920200300004	Microswitch RZ-15GQ22-B3	微动开关RZ-15GQ22-B3	3	
15	921100100011	Instrument 3501-12-80V	仪表3501-12-80V	1	Curtis-SE
	921100100063	Indicator 3401T-12-96V	仪表3401T-12-96V	1	Curtis-F
	921100100045	Indicator IDD-E-35CD17B	仪表IDD-E-35CD17B	1	Inmotion
16	921900100001	Converter DC48V to 24V	转换器DC48V转24V	1	
17	921900100004	Converter DC24V to 5V	转换器DC24V转5V	4	
18	920200100020	Emergency switch LAY39-01MJ-RC	急停开关LAY39-01MJ-RC	1	
19	275233010001	Body harness (Curtis-3R16N)	车身线束(Curtis-3R16N)	1	Curtis-SE
	275233010014	Body harness ((Curtis-F-3R16NC)	车身线束(Curtis-F系列-3R16NC)	1	Curtis-F
	275233010011	Body harness ((Inmotion-3R16N)	车身线束(Inmotion-3R16N)	1	Inmotion
20	921000200067	Charger SN48V55A	充电器SN48V55A(亚中)	1	铅酸350/400Ah
	921000200068	Charger SN48V55A	充电器SN48V55A(亚英/欧)	1	铅酸350/400Ah
	921000200071	Charger SN48V55A	充电器SN48V55A(澳)	1	铅酸350/400Ah
	921000200565	Charger SN48V55A(3P 220V)	充电器SN48V55A(美式三相220V)	1	铅酸350/400Ah
	921000200072	Charger SN48V55A(3P 480V)	充电器SN48V55A(美式三相480V)	1	铅酸350/400Ah
	921000200801	Charger SN48V20A	充电器SN48V20A(美式110V)	1	所有铅酸电池
21	275233010008	Total power cord bundle	总电源线束	1	
22	910400500005	Spring washer GB93-6	弹簧垫圈GB93-6	4	



275398501046标牌安装(中文) /Sign installation(Chinese)

	序号/NO	编码/SN	Name	名称	数量/QTY	备注/Remark
	A	275247001001	Label assembly (Chinese)	标贴总成(中文)	1	包含/Inc.1-16
	1	255047020003	Instructions for use of forklift	叉车使用须知	1	
	2	255047020007	Battery maintenance tips	蓄电池保养提示	1	
	3	255047020022	NOBLELIFT(495x70)	NOBLELIFT(495x70)	1	
	4	255047020011	Lifting label	吊装标贴	1	
	5	255047020004	Hydraulic oil label	液压油标贴	1	
	6	275247020001	Product model identification	产品型号标识	1	
	7	255047020014	Squeeze label	挤手标贴	1	
	8	255047020008	No lifting sign	禁止起吊标识	1	
	9	255047020012	Safety belt label	安全带标贴	1	
	10	255047020009	No Climbing	禁止攀爬	1	
	11	532647020000	Safety label	安全标贴	1	
	12	255047020019	Whole vehicle hoisting	整车吊装	1	
	13	255047020006	Opening label of battery box cover	电池箱盖开启标贴	1	
	14	255047020020	Anti-roll safety sign 1	防侧翻安全标识1	1	
	15	255047020010	Prompt label	提示标贴	1	
16	255047020013	No Seaters	禁止座人	1		

